



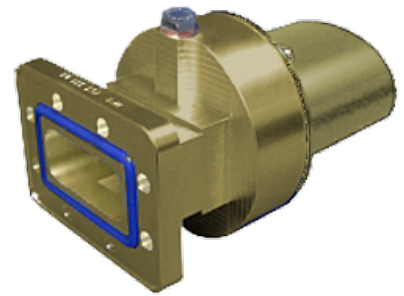
Standard connector for FLEXWELL® elliptical waveguide E38
with PDR40 flange, Plast 2000 sealed
frequency range: 3.6 - 4.2 GHz

FEATURES / BENEFITS**Superior Design**

- Due to the precise manufacturing no tuning screws are necessary
- The terminations are brass passivated for good electrical performance
- A gas inlet is included

Quick & Easy Installation

- Different flaring tools are available
- No tuning in the field

**Technical features****STRUCTURE**

Transmission Line Type		Elliptical Waveguide
Cable Type		E38
Model Series		E38 Series
Connector Frequency Range	GHz	3.6 - 4.2
Connector Type		Fixed
Sealing Method		Plast 2000
Plating Outer/Inner		Brass
Waterproof Level		IP68
Gas Inlet		G 1/8
Connector Interface		PDR40

MECHANICAL SPECIFICATIONS

Length	mm (in)	165 (6.5)
Outer Diameter	mm (in)	102 (4)
Weight	kg (lb)	2 (4.41)
Sealing Volume	cm ³ (ounces)	100 (3.38)

External Document Links[Installation Instruction](#)**Notes**

Sealing component PLAST 2000 is **not** part of the connector delivery and must be ordered separately.