



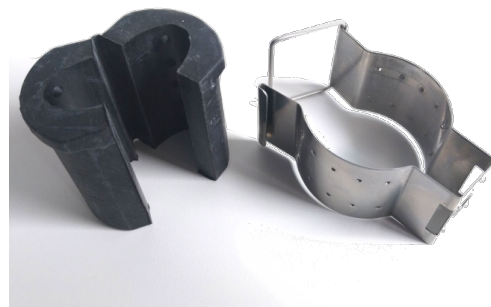
The RSB clip is designed for installation of FLEXWELL elliptical waveguide types E105 to E380 and overmoded waveguide type EO38. The clip is a universal clamp device which can be used in many mounting configurations.

The clip is manufactured from stainless steel and is resistant against most environmental conditions.

The set consists of a stainless steel clamp including a clamp lining made of rubber.

FEATURES / BENEFITS**Elliptical Waveguide installation**

- The RSB clip provides a simple and fast installation of small and medium size elliptical waveguides
- It includes a rubber clamp lining



RSB-114 with Clamp lining RSB-130/40

External Document Links[Installation Instruction](#)**Notes****Technical features****GENERAL SPECIFICATIONS**

Product Line		Elliptical Waveguide Accessories
Product Type		Hanger
Hanger Type		RSB Clip with clamp lining for Elliptical Waveguide
Transmission Line Type		E150 EP150

MECHANICAL SPECIFICATIONS

Number of Cable / Waveguide Runs		1
Material		Clip: Stainless Steel Clamp lining: EPDM
Drill Hole Size	mm (in)	8 (0.315)

ACCESSORIES

Spare Part / Useful Accessories		Cleat : RSB-310 Anchor bar fixation : RSB-315
---------------------------------	--	--

TEMPERATURE SPECIFICATIONS

Installation Temperature	°C (°F)	-50 to 85 (-58 to 185)
Operation Temperature	°C (°F)	-50 to 85 (-58 to 185)
Storage Temperature	°C (°F)	-50 to 85 (-58 to 185)

PACKAGING INFORMATION

Package Quantity		10
Weight per piece	kg (lb)	0.068 (0.15)