

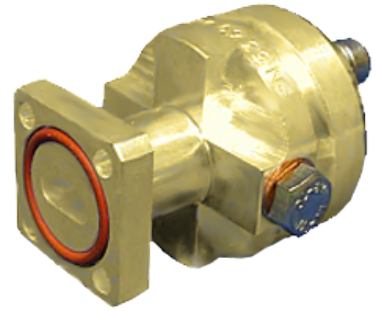
**B260-300FP**

Connector for FLEXWELL® elliptical waveguide E300, PBR260 Flange

Standard connector for FLEXWELL® elliptical waveguide E300 with PBR260 flange, gasket with shrinking sleeve sealed  
frequency range: 24.95 - 29.5 GHz

**FEATURES / BENEFITS****Superior Design**

- Due to the precise manufacturing no tuning screws are necessary
- The terminations are brass passivated for good electrical performance
- A gas inlet is included

**Quick & Easy Installation**

- Different flaring tools are available
- No tuning in the field

**Technical features****STRUCTURE**

Transmission Line Type		Elliptical Waveguide
Cable Type		E300
Model Series		E300 Series
Connector Frequency Range	GHz	24.95 - 29.5
Connector Type		Fixed
Sealing Method		Gasket with Shrinking Sleeve
Plating Outer/Inner		Brass
Waterproof Level		IP68
Gas Inlet		M5 x 0.8
Connector Interface		PBR260

**MECHANICAL SPECIFICATIONS**

Length	mm (in)	44 (1.7)
Outer Diameter	mm (in)	32 (1.3)
Weight	kg (lb)	0.2 (0.44)

**External Document Links**

[Installation Instruction](#)  
[Application Note](#)

**Notes**