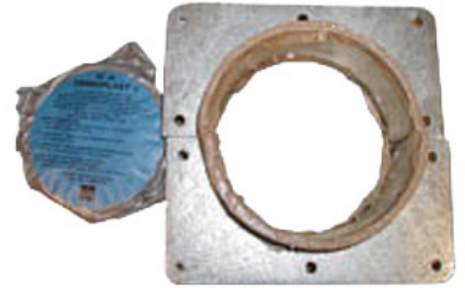




These innovative Wall feed through system feature a design which reduces installation time. Each WF-Kit contains a rubber wall gland which fit inside the mounting plate to hold the coax in place, butyl sealing compound and a tension clamp with two bolts.

**FEATURES / BENEFITS****External Document Links**[Installation Instruction](#)**Notes****Technical features****STRUCTURE**

Product Line		Coaxial Cable Accessories
Product Type		Wall/Roof Feed-Through System
Feed-Through Component		Single Entry Kit
Transmission Line Type		HCA618
Coaxial Cable Type		Air Dielectric
Cable Size		6-1/8"

**MECHANICAL SPECIFICATIONS**

Feed-Through Holes		1
Feed-Through Hole Diameter	mm (in)	180 (7.11)
Mated to Cable Size and Interface		6-1/8

**PACKAGING INFORMATION**

Package Quantity		1
------------------	--	---