

Instruction Sheet

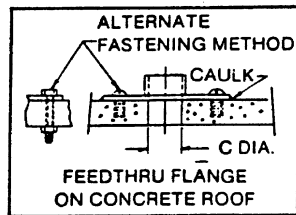
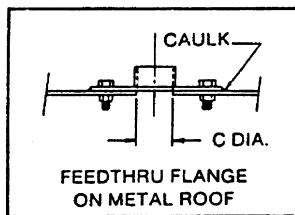
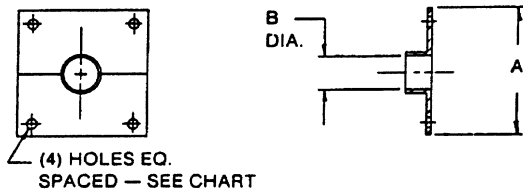
No. 412318
Rev. E
ECO 10409

Coaxial Cable Wall/Roof Feed-Thru

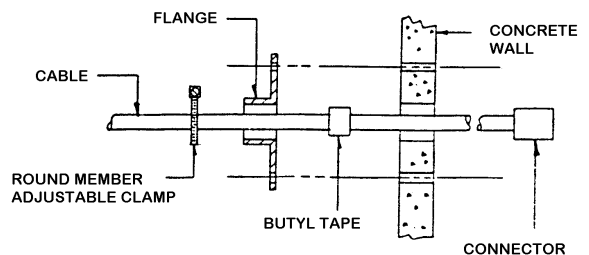
The wall/roof feed-thru is designed to provide a weatherproof lead-in for coaxial cable through a wall or roof. It may be mounted to metal or concrete. The feed-thru is made of two flange halves designed for easy installation. The mounting flange requires a six to eight inch flat mounting surface, and is assembled with four screws and one clamp. See chart for dimensions. Mounting hardware and optional silicon sealant are not provided.

1. Cut a hole through the center of the designated mounting surface. Use dimension "C" on chart below for correct through hole size.

FLANGE DETAIL



2. Drill four flange mounting holes through the mounting surface. Use the flange as a template for hole position.
3. Pass the coaxial cable through the cut feed hole. Determine the final set position of the cable relative to the flange clamping area. Apply several layers of butyl rubber tape to the cable area to be clamped. Pull the tape taut to assure adhesion.
4. Assemble the feed-thru halves over the section of cable wrapped in butyl tape. Secure the flange assembly to the mounting surface with mounting hardware.
5. Secure the coax cable in place with a round member adjustable clamp over the flange housing.
6. Wrap the remainder of butyl tape around the cable / flange junction, then apply several layers of black electrical tape over the butyl tape. To seal the outer flange area, apply a commercial grade of silicone sealant to all visible flange joints and edges.



Cable Size	Part Number	"A" Dim.	"B" Dim.	"C" Dim.	Hole Dia.	Bolt Size
3/8"	920432-001	6" Sq.	9/16" Dia.	1-3/4" Dia.	.281"	1/4"
1/2"	920432-002	6" Sq.	3/4" Dia.	2-3/4" Dia.	.281"	1/4"
7/8"	920433	6" Sq.	1-1/4" Dia.	2-3/4" Dia.	.406"	3/8"
1-1/4"	920867	6" Sq.	2-1/4" Dia.	4" Dia.	.406"	3/8"
1-5/8"	920434	6" Sq.	2-1/4" Dia.	4" Dia.	.406"	3/8"
2-1/4"	921132	6" Sq.	2-5/8" Dia.	3" Dia.	.406"	3/8"
3"	920435	8" Sq.	3-3/16" Dia.	5" Dia.	.531"	1/2"
3-1/2"	920572	8" Sq.	3-5/8" Dia.	5-1/2" Dia.	.531"	1/2"
4-1/8"	920555	10" Sq.	4-3/4" Dia.	6-1/2" Dia.	.531"	1/2"

