

# Instruction Sheet

No. 412507  
Rev. D

## Standard Hanger Kit for Waveguide and Cable

Standard Hanger instructions apply to all Flexwell stainless steel waveguide hangers and to the 1/2", 7/8", 1-1/4" and 1-5/8" cable hangers. This kit contains ten hangers with captivated assembly hardware. Recommended hanger spacing for all cable and larger size waveguide is every 3 feet (1 m). Hanger spacing for WE150 and WE 191 is 1.9 feet (0.6 m). See chart for maximum spacing.

For vertical runs, the hangers are used only to secure the transmission line to the tower and are not used to support the transmission line weight. Use cable grips at the top of the vertical run to support the weight of the transmission line.

### TOOLS REQUIRED

1. Socket Wrench, 3/8"
2. Tools for mounting accessories

### INSTALLATION

1. If installing the hangers with 3/8" hardware, insert a mounting bolt with lockwasher (supplied by user) through the hanger mounting hole. See Figure 1.
2. For larger size hangers, insert the tabbed clamp support plate into the slotted center of the hanger clamp. Secure the support plate by bending the hanger clamp into shape as shown in Figure 2.

Hangers for the 1/2" cable, WE191 and WE150 waveguide, do not require a clamp support plate. If using 3/8" mounting hardware, bend the two sides of the clamp together to captivate the bolt head.

3. Fasten the hangers to the tower with 3/8" hardware or  
**Hanger Specifications**

Hanger Kit Number	920981-001	920904	920981-003	920981-004	920981-005	920981-006	920981-007	920981-008	920981-009	920981-010	920981-012
Waveguide Type	WE37	S-WE46	WE61	WE65	WE70	WE78	WE108	WE130	WE150	WE191	--
Cable Size	2-1/4"	--	--	1-1/4"	--	--	7/8"	--	--	1/2"	1-5/8"
Mounting Hole	3/8"	3/8"	3/8"	3/8"	3/8"	3/8"	3/8"	3/8"	3/8"	3/8"	3/8"

1/2" metal mounting strap. If mounting the hangers

with metal strap, insert the strap through the two slots of the hanger clamp. The clamp support plate is not used. Refer to installation detail drawing - Round Member Adapter Kit.

4. Slide the cable/waveguide into the hanger clamp, then clip the tabbed side of the hanger closed with the captivated bolt and nut. Tighten the hanger hardware for a snug fit around the transmission line. See Figure 3.

**CAUTION:** Do not overtighten the hanger around waveguide or electrical damage to the waveguide will result.

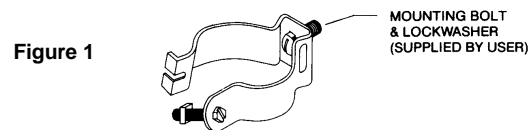


Figure 1

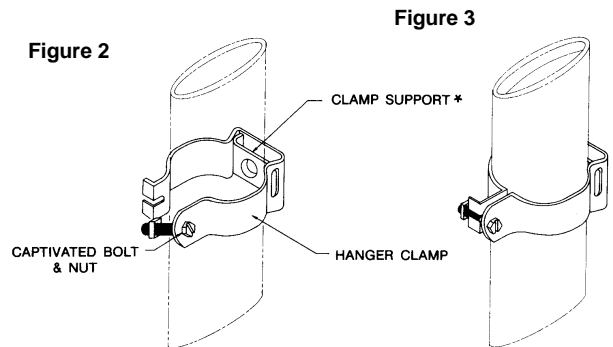


Figure 3

\* CLAMP SUPPORT NOT USED FOR 1/2" CABLE, WE191 AND WE150 WAVEGUIDE

### RFS Cablewave Systems

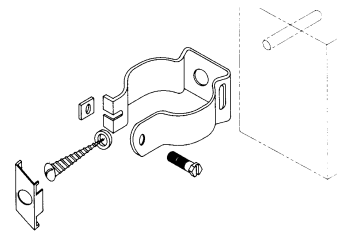
200 Pondview Drive  
Meriden, CT 06450  
Ph (203) 630-3311  
Fax (203) 630-1122

**RADIO FREQUENCY SYSTEMS**  
**RFS Cablewave**

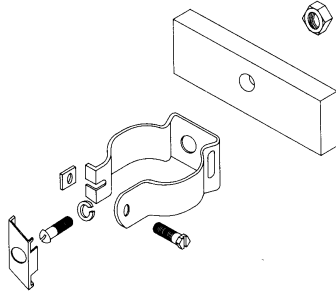


Illustrated are five different mounting configurations for hangers, three of which employ the use of hanger adapters which are available from Cablewave Systems.

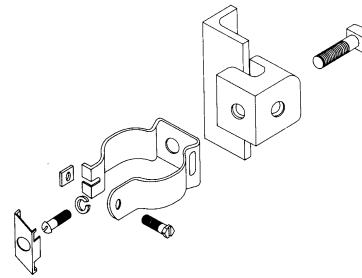
NOTE: For illustration detail, the hanger assembly hardware is not shown captivated.



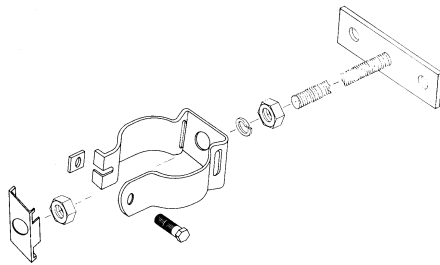
Direct to Wood or Concrete  
(using an anchor)



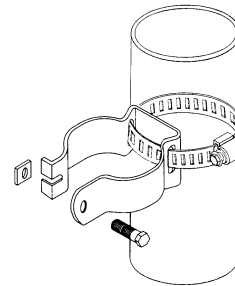
Direct to Tower



Angle Member Adapter Kit 915255



Ceiling Adapter 514608-003



Round Member Adapter Kit 514542-XXX

**Maximum Hanger Spacing & Tower Member Clearance**

Cable Size	Maximum Hanger Spacing	Minimum Clearance To Any Adjacent Tower Member
FLC/HCC 1/2" -50J	4 ft (1.2m)	4.5" (114 mm)
FLC/HCC 7/8" -50J	6 ft (2m)	4" (101 mm)
FLC 1-1/4" -50J	6 ft (2m)	5" (127 mm)
FLC/HCC 1-5/8" -50J	6 ft (2m)	4" (101 mm)
HCC 3" -50J	6 ft (2m)	3" (76 mm)

