

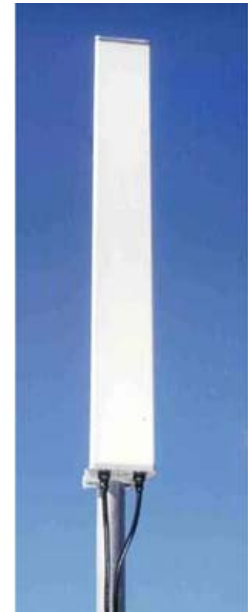
**Optimizer® Panel Dual Polarized Antenna**

**Product Description**

This X-Polarized variable tilt antenna provides exceptional suppression of all upper sidelobes at all downtilt angles. It also features null fill and a wide downtilt range with optional remote tilt. This antenna is optimized for performance across the entire frequency band (1710-2200 MHz).

**Features/Benefits**

- **Variable electrical downtilt - provides enhanced precision in controlling intercell interference. The tilt is infield adjustable 0-10 deg.**
- **High Suppression of all Upper Sidelobes (Typically <-20dB).**
- **Gain difference between UL and DL <1dB.**
- **Azimuth horizontal beamwidth difference <7deg between UL and DL (1710-1755 & 2110-2155).**
- **Dual polarization; Broadband design.**
- **Low profile for low visual impact.**



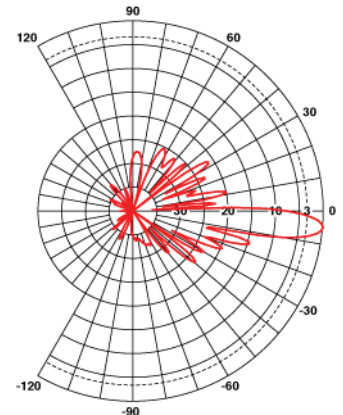
**Technical Specifications**

**Electrical Specifications**

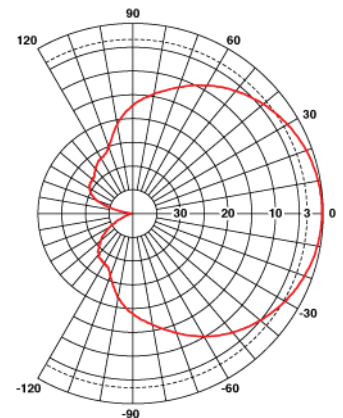
Frequency Range, MHz	1710-2200
Antenna Type	Panel Dual Polarized
Electrical Down Tilt Option	Variable
Gain, dBi (dBd)	18.8 (16.7) Avg. across band
Electrical Downtilt, deg	0-10
Horizontal Beamwidth, deg	65 ±5 (65.1 average across band)
VSWR	< 1.5:1
Vertical Beamwidth, deg	4.5 to 5.5
Upper Sidelobe Suppression, dB	Typically >20
Polarization	Dual pol +/-45°
Front-To-Back Ratio, dB	> 26 (Typically 29)
Maximum Power Input, W	300
Isolation between Ports, dB	> 30
Lightning Protection	Direct Ground
3rd Order IMP @ 2 x 43 dBm, dBc	> 150 (155 Typical)
7th Order IMP @ 2x38 dBm, dBc	> 170

**Mechanical Specifications**

Rated Wind Speed, km/h (mph)	160 (100)
Survival Wind Speed, km/h (mph)	200 (125)
Max Wind Loading Area, m² (ft²)	0.31 (3.3)
Maximum Thrust @ Rated Wind, N (lbf)	558 (125)
Front Thrust @ Rated Wind, N (lbf)	558 (125)
Reflector Material	Aluminum
Radiating Element Material	Brass
Radome Material	Fiberglass
Connector Type	(2) 7-16 DIN Female
Connector Location	Bottom
Mount Type	Downtilt
Mounting Hardware	APM40-2
Weight w/o Mtg Hardware, kg (lb)	12 (26.4)
Packing Dimensions, HxWxD, mm (in)	2021 x 260 x 200 (79.5 x 10.2 x 7.8)
Overall Length, m (ft)	1.85 (6.0)
Dimensions - HxWxD, mm (in)	1850 x 175 x 80 (72.0 x 6.8 x 3.15)
Shipping Weight without mounting hardware, kg (lb)	12 (26.4)



**Vertical Pattern**



**Horizontal Pattern**

All information contained in the present datasheet is subject to confirmation at time of ordering.