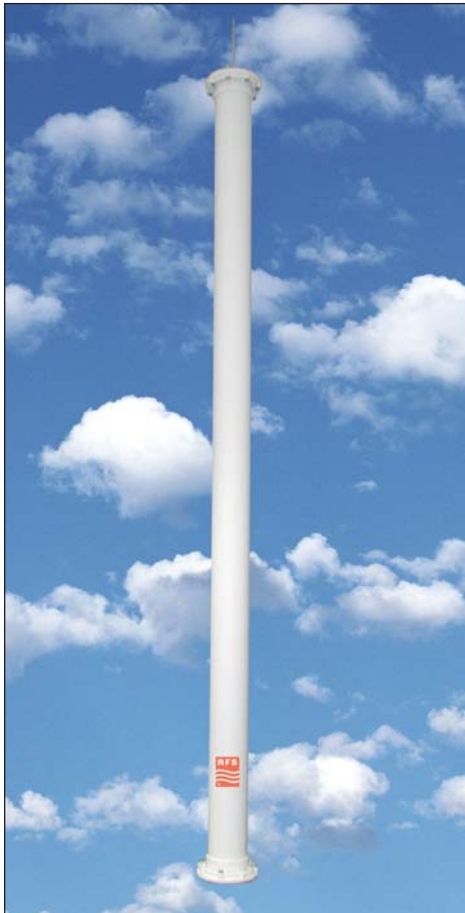


NEW



RADIO FREQUENCY SYSTEMS

Superturnstile UHF Antenna



Description

A new ultra-slim and lightweight superturnstile UHF broadcast antenna supports the entire US and European UHF bands (470 to 862 MHz).

This antenna exhibits pattern circularity that competing, higher priced point antennas struggle to achieve.

The profile of our new superturnstile is less than that of competing UHF broadband antennas. This has resulted in a significant reduction in wind loading and weight, providing broadcasters with enormous flexibility when considering installation on existing loaded towers.

Benefits

- Ideal low cost and wind load solution.
- Ideal for many low and medium power broadcast applications, such as coverage of small to medium-sized cities, and translator applications.
- Exhibits pattern ripple of better than ± 1.5 dB across the entire UHF band.
- Low drag profile underpins the antenna's high wind speed rating and low wind load characteristics.
- Uniquely cost-effective.

Ordering Information

Model Number	Type	Wavelengths
STA40	4 Bay	4
STA80	8 Bay	8
STA120	12 Bay	12

The Clear Choice in Wireless™



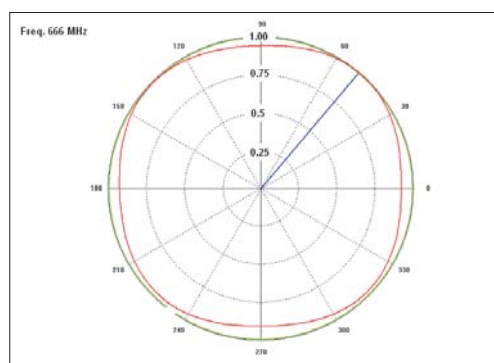
Technical Specifications

Frequency Range, MHz	470 - 862
Polarization	Horizontal
Number of Channels	Multichannel
Configurations	4, 8, 12 lambda
Input	1-5/8" EIA Single Input
Input Return Loss	<1.1:1 across frequency range
Pattern	Omnidirectional
Impedance, Ohm	50
Mounting Arrangement	Base Flange Mount
Lightning Protection	Single Rod

Gain (Peak)

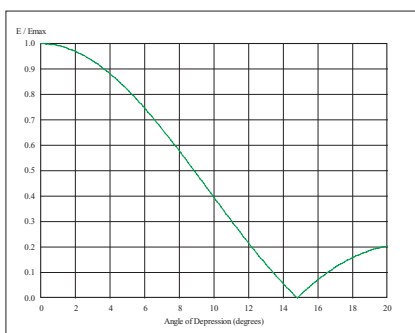
Antenna Type	Gain (dBd)
4 Bay	6.89
8 Bay	9.79
12 Bay	11.27

Azimuth Pattern

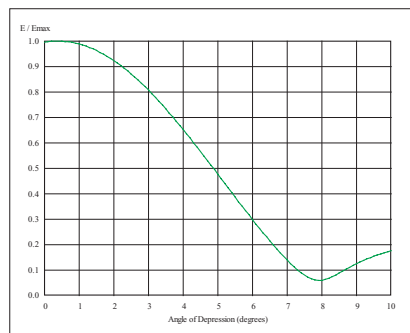


Elevation Patterns

4 Bay



8 Bay



12 Bay

