

This tool is foreseen for the preparation of CELLFLEX® cables 1/4", 3/8", 1/2" and 7/8" and for RADIAFLEX® cables 1/2" and 7/8" before and during installation of the connectors. It can be only used for the above mentioned function, please always refer to the instruction of the valid connector in addition!

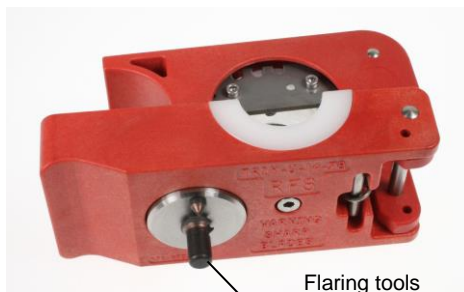
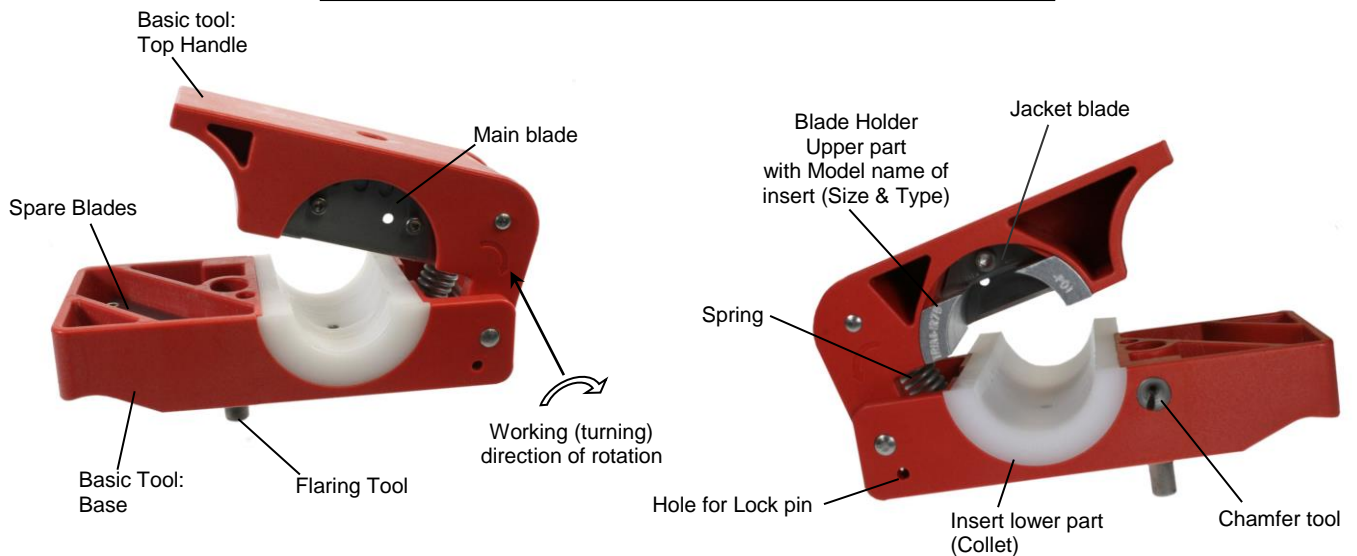
These instructions are written for qualified and experienced personnel. Please study them carefully before starting any work. Any liability or responsibility for the results of improper or unsafe installation practices is disclaimed. Please respect valid environmental regulations for assembly and waste disposal. Always make sure to use appropriate personal protection!



**Safety precaution: Sharp blade - Risk of injury => Protective gloves required**



### Main Parts of the Universal Trimming Tool



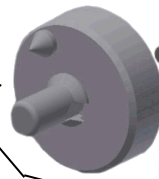
Not required for CELLFLEX® SCF type of cables/connectors, as well not required for RADIAFLEX® RSF type of cables/connectors.



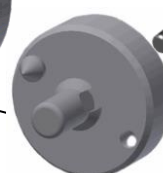
**TRIM-FL14-12**  
with 3 inserts and 3 flaring pins for LCF14, LCF38 and LCF12 cables



**TRIM-FR12-P02**  
with 1 inserts and 1 flaring pin for RADIAFLEX® connector 1/2" P02 series. The needed flaring pin is indicated by the letter R (other holes are without function)



**TRIM-FL78**  
with Guide pin incl. deburrer and flaring pin for LCF78 and UCF78 cables

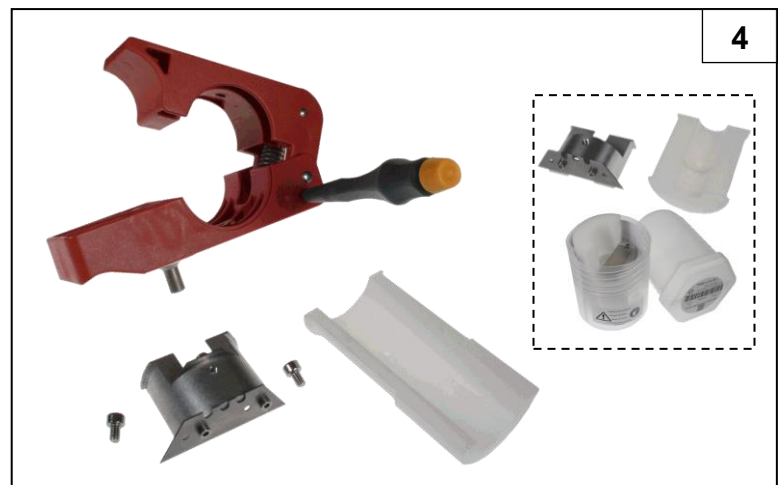
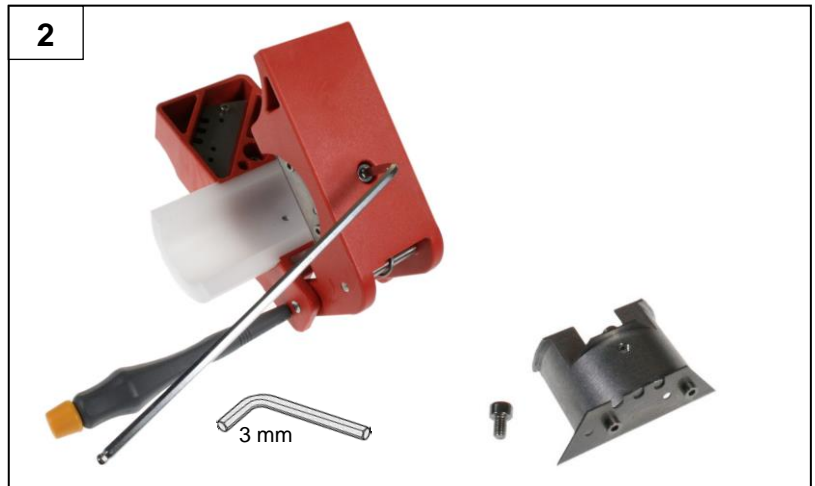
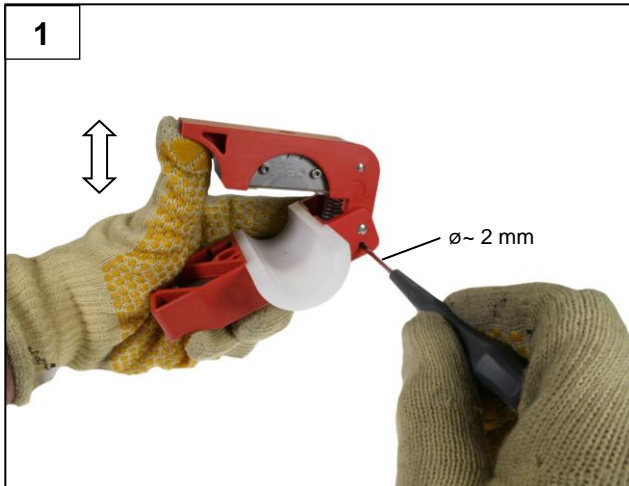


**TRIM-FR78-P02**  
with Guide pin incl. deburrer and flaring pin for RADIAFLEX® connector 7/8" P02 series. Identifiable by the hole on opposite of the flaring pin.

## Preparation of the Tool - Change of the inserts:

### Attention:

Universal Trimming Tool to be handled and used with great care, blades are extremely sharp!  
It is recommended to use protective gloves.



1. Open the Universal Trimming Tool and lock it by inserting a suitable lock pin, e.g. a screw driver.
2. Unscrew the screw placed on the top handle of the tool with hexagon socket 3mm and remove the insert/blade holder. Take care of the very sharp knives.
3. Unscrew the screw placed on the base of the tool with hexagon socket 3mm and remove the insert/collet.
4. Place new inserts in the tool, make sure index hole in insert lower part and index pin are aligned and carefully tighten the screws.  
Because of safety reason use the plastic box for storage and transportation.

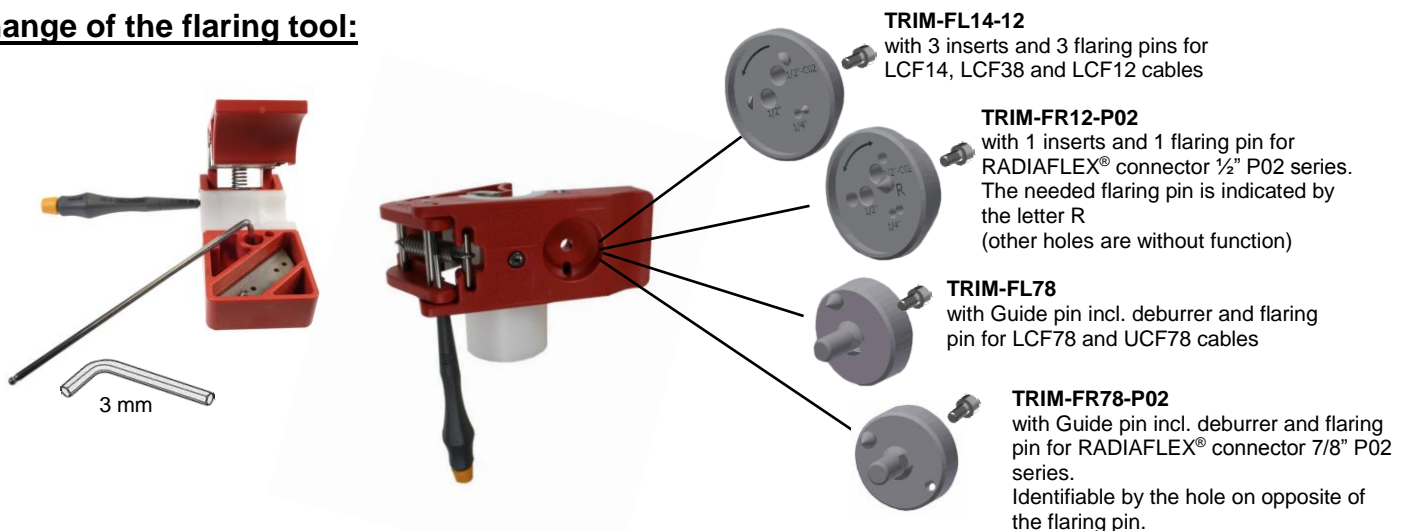
### Blade Replacement:



The blades are made of hardened steel. Therefore no commercially available cutting blades can be used as replacement. When the blades are worn-off replace with new blades.

- Open the Universal Trimming Tool and lock it by inserting a suitable lock pin, e.g. a screw driver. Remove Blade Holder from the tool as shown before.
- Unscrew and remove the screws with hexagon socket 2 mm (main blade) or 2,5 mm (jacket blade) and change the blade(s). Observe that the cutting edge is being inserted symmetrically to the socket head screws. The bevelled edge points outwards as shown. Each Main Blade is positioned asymmetrically and can be reused after a 180° turn.

### Change of the flaring tool:






- Open the Universal Trimming Tool and lock it by inserting a suitable lock pin, e.g. a screw driver as shown before.
- Unscrew and remove the screw of the flaring tool in the base of the tool.
- Remove the flaring tool. Insert the adequate flaring tool and tighten the screw with precaution in the base of the tool.



**CELLFLEX® & RADIAFLEX®**  
Coaxial & Radiating Cable  
Connectors

**User Manual**  
1000006066-06  
TRIM-U-14-78 (TRIM-SET-L(R)\*\*.\*\*\*\*)  
Universal Trimming Tool for Preparation of Cables 1/4", 3/8", 1/2" & 7/8"

**Available Insert Kits and Spare Blades:**

CELLFLEX® Cable type	For Connector type	Universal Trimming tool (complete with inserts) 	Inserts for extension	
			Single Insert kit (upper & lower) 	Single flaring tool 
SCF14-50	OMNI FIT™ Premium D01	TRIM-SET-S14-D01	TRIM-IS14-D01	not required
SCF38-50	OMNI FIT™ Premium D01	TRIM-SET-S38-D01	TRIM-IS38-D01	not required
	RAPID FIT™ 070 & 071			
SCF12-50	OMNI FIT™ Premium D01	TRIM-SET-S12-D01	TRIM-IS12-D01	not required
	RAPID FIT™ 070 & 071			
	OMNI FIT™ Standard C02	TRIM-SET-S12-C02	TRIM-IS12-C02	not required
LCF14-50	OMNI FIT™ Premium D01	TRIM-SET-L14-D01	TRIM-IL14-D01	TRIM-FL14-12
LCF12-50	OMNI FIT™ Premium D01	TRIM-SET-L12-D01	TRIM-IL12-D01	
	RAPID FIT™ 060, 061, 070 & 071			
LCF78-50 UCF78-50	OMNI FIT™ Premium D01	TRIM-SET-L78-D01	TRIM-IL78-D01	TRIM-FL78
	RAPID FIT™ 060, 062, 070 & 072			
	OMNI FIT™ Standard C02	TRIM-SET-L78-C02	TRIM-IL78-C02	
<b>RADIAFLEX®</b> Cable size				
1/2"	Premium P02 series	TRIM-SET-R12-P02	TRIM-IR12-P02	TRIM-FR12-P02
7/8"	Premium P02 series	TRIM-SET-R78-P02	TRIM-IR78-P02	TRIM-FR78-P02
<b>Kit of Spare blades (Main blades)</b>			TRIM-B30	



The Insert Kit contains a Collet (lower part) and a Blade Holder (upper part) with knives. It comes in a plastic box. It is recommended to use this plastic box for safe storage and transportation.

Tools and inserts for 1 1/4" & 1 5/8" cables available as well.

Last Issue of the respective Installation Instruction for the connectors, tools and inserts are available on RFS website: <http://www.rfsworld.com> (enter Model Name of connector or tool, then follow the Link to the valid installation instructions on the bottom of the data sheet)