



# Radio Frequency Systems



**APM50-BH MOUNTING KIT  
INSTALLATION INSTRUCTIONS**

REV. 1.1 | 2021.03



## Mounting Instructions for APM50-BH Kit

---

### SUMMARY

1. Applications.....	3
2. Mechanical Specifications .....	3
3. Assembly and Installation .....	3
4. Installation Tools .....	3
5. Installation.....	3

# Mounting Instructions for APM50-BH Kit

## 1. APPLICATIONS

The APM50 kits are mounting hardware options to be used for Base Station antennas.

## 2. MECHANICAL SPECIFICATIONS

- Pole Diameter: 65-115 mm
- Material: SUS316
- Weight: 0.1 kg

## 3. ASSEMBLY AND INSTALLATION

Please read this manual before installation.

1. Only qualified personnel are allowed to install the antenna.
2. The appearances of the antennas shown in the figures is only for reference and may differ from the actual one.
3. Before the installation, check the appearance of the brackets according to this guide. The installation methods vary with the component appearance. The installation procedures described in this guide must be strictly followed.
4. The protection caps of antenna ports not connecting to jumpers must not be removed. Meanwhile, waterproof measures must be taken to protect these antenna ports.

## 4. INSTALLATION TOOLS



### TORQUE VALUES

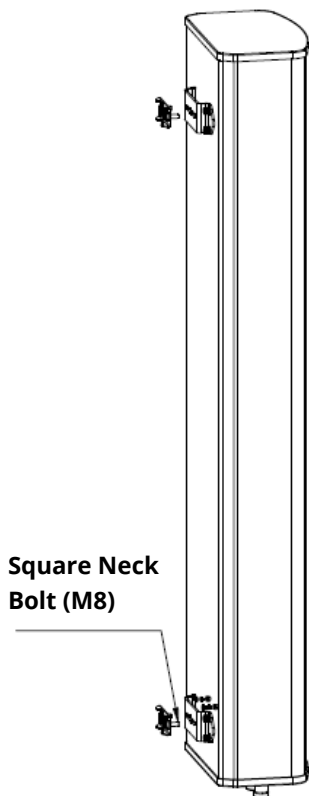
NUT	TORQUE	WRENCH TYPE
M8	18-22 Nm	13 mm
Clamp	10-12 Nm	8 mm

## 5. INSTALLATION

## Mounting Instructions for APM50-BH Kit

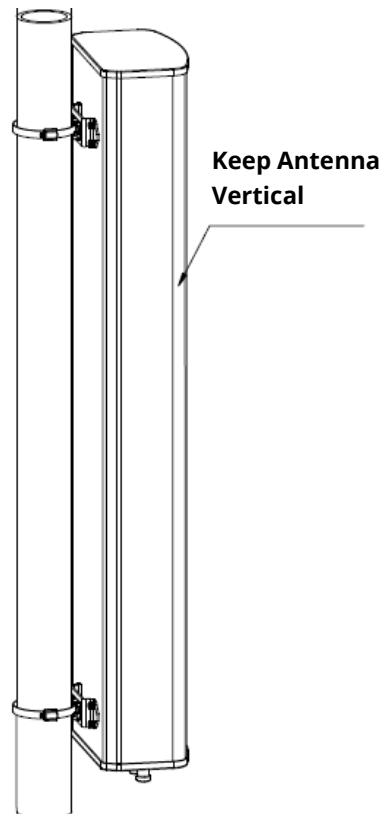
### Step 1

Pre-assemble mounting brackets to the antenna with four M8 bolts.



### Step 2

1. Loosen nut of hose clamp and assemble into the Mounting brackets.
2. Tighten nut of hose clamps to fix antenna.



---

## About RFS

Radio Frequency Systems (RFS) delivers the end-to-end RF solutions and expert services needed to evolve wireless and broadcast networks today and tomorrow. Our cables, connectors, antenna systems and RF conditioning products are based on more than 120 years of experience delivering cutting-edge RF solutions and industry firsts. As a result, our solutions are recognized globally for their innovation, superior performance and unmatched quality.

As an ISO-compliant company with global operations, we bring our customers world-class engineering and manufacturing skills backed with comprehensive local support services. Our customers know they can rely on our expertise and commitment to excellence from initial design to final delivery and beyond — whether they're looking to support 5G, deploy small cells, empower smart cities or improve indoor coverage in the most challenging locations.

### Australia

Kilsyth  
+61 3 9751 8400  
*Technical Support*  
Technical.Support@rfsworld.com

### Latin America

Sao Paulo  
*Technical Support*  
MTS.Latam@rfsworld.com

### China

Shanghai  
+86 21 3773 8888  
*Technical Support*  
Technical.Support@rfsworld.com

### France, Italy, Spain

Paris, Vimercate, Madrid  
*Technical Support*  
Product.Support@rfsworld.com

### Germany

Hannover  
+49 511 676 55 - 0  
*Technical Support*  
Product.Support@rfsworld.com

### India

Gurgaon  
+91-124-4092788  
*Technical Support*  
Technical.Support@rfsworld.com

### North America

Meriden, CT  
+1.800.321.4700  
*Technical Support*  
ApplicationsEngineering@  
rfsworld.com

### Mexico

Tlalnepantla de Baz  
+52 55 2881-1100  
*Technical Support*  
MTS.Latam@rfsworld.com

### Russia

Moscow  
+7 495 258 0649  
*Technical Support*  
Product.Support@rfsworld.com

### South Africa

Centurion  
+27 83 647 6187  
*Technical Support*  
Product.Support@rfsworld.com

### UAE

Dubai  
+971 4 568 7979  
*Technical Support*  
Product.Support@rfsworld.com

### United Kingdom

Haddenham  
+44 1844 294900  
*Technical Support*  
Product.Support@rfsworld.com