

L Band 65° & 90° Panel Antennas

Product Description

The RFS L Band panels have been designed with vertical polarisation for DAB and DVB-H applications. Featuring wideband operation (1452Mhz to 1675Mhz) these antennas have a very low VSWR, having been designed specifically for operation in these bands. These antennas also have high power handling for an antenna in this class making them ideal for medium power applications. A wide range of standard mounting arrangements is also available.



Features

- Low wind load
- Excellent VSWR across the band
- Vertical polarisation for DAB and DVB-H applications
- High power handling (750 watts)
- Multiple mounting arrangements available
- Excellent front to back ratio
- Can be built into an array for omnidirectional patterns

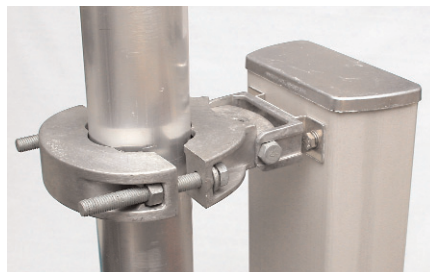
Specifications

| Model | 1565V13 | | 1565V16 | | 1590V15 | |
|---|---|-------------|---|---------------|---------------------------------------|---------------|
| Frequency Band, MHz | 1452 - 1675 | | 1452 - 1675 | | 1452 - 1675 | |
| Frequency Sub-Band, MHz | 1452 - 1492 | 1670-1675 | 1452 - 1492 | 1670-1675 | 1452 - 1492 | 1670-1675 |
| Polarisation | vertical | vertical | vertical | vertical | vertical | vertical |
| Horizontal Beamwidth, ° | 65 ± 5 | 65 ± 5 | 65 ± 5 | 65 ± 5 | 90 ± 5 | 90 ± 5 |
| Vertical Beamwidth, ° | 13± 0.3 | 11.3 ± 0.2 | 5.7± 0.3 | 5.0 ± 0.2 | 5.7± 0.3 | 5.0 ± 0.2 |
| Electrical Downtilt, ° | 2 & 4 | 2 & 4 | 2 & 4 | 2 & 4 | 1.5 | 1.5 |
| Gain, dBd (+/-0.5dB) | 14 | 14.5 | 17 | 17.5 | 15.5 | 16 |
| Nullfill | 1st null filled 10% min, 2nd null filled 2.5% min | |1st null filled 15% minimum, 2nd null filled 7% minimum..... | | | |
| All Upper Side Lobe Suppression , dB | > 18 | > 18 | > 18 | > 18 | > 18 | > 18 |
| Front to Back Ratio, dB | > 25 | > 25 | > 25 | > 25 | > 20 | > 20 |
| VSWR | < 1.1 | < 1.22 | < 1.1 | < 1.22 | < 1.1 | < 1.22 |
| Power, max, Watts | 750 | 750 | 750 | 750 | 750 | 750 |
| Impedance, Ohms | 50 | 50 | 50 | 50 | 50 | 50 |
| Lightning protection | DC grounded | DC grounded | DC grounded | DC grounded | DC grounded | DC grounded |
| Connector: Type + Location | 7-16 at the bottom 7-16 at the bottom | | 7-16 at the bottom 7-16 at the bottom | | 7-16 at the bottom 7-16 at the bottom | |
| Dimension (H x W x D) max, mm | 1008x169x80 | 1008x169x80 | 1984x169x80 | 1984x169x80 | 1984x169x80 | 1984x169x80 |
| Weight excluding Mounting Hardware, Kg | 6.0 | 6.0 | 10.8 | 10.8 | 10.8 | 10.8 |
| Survival Wind Speed, m/s / km/h | 66.7 / 240 | 66.7 / 240 | 66.7 / 240 | 66.7 / 240 | 66.7 / 240 | 66.7 / 240 |
| Rated Wind Speed, m/s / km/h | 44.4 / 160 | 44.4 / 160 | 44.4 / 160 | 44.4 / 160 | 44.4 / 160 | 44.4 / 160 |
| Frontal Thrust (max) @ 160km/h DIN1055, N | 270 | 270 | 600 | 600 | 600 | 600 |
| Wind load area, (max) DIN1055, m2 | 0.22 | 0.22 | 0.48 | 0.48 | 0.48 | 0.48 |
| Radiating Element Material | Aluminium | | | | | |
| Radome Material | UV Resistant Fibre Glass | | | | | |
| Radome Color | Light grey, RAL7035 | | | | | |
| Mounting Hardware | APM40 Global Mount | | | | | |
| Mounting Hardware Material | Diecast Aluminium and Galvanized Steel | | | | | |
| Packaging antenna size (H x W x D), cm | 118x26x20 | 118x26x20 | 215 x 26 x 20 | 215 x 26 x 20 | 215 x 26 x 20 | 215 x 26 x 20 |

All information contained in the present brochure is subject to confirmation at time of ordering



Pipe Mount with mechanical tilt



Pipe Mount without mechanical tilt adjustment



Wall Mount with mechanical tilt adjustment