

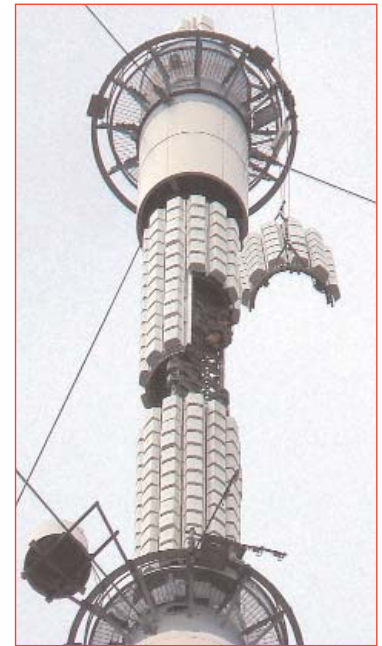
470-860MHz TV Panel Arrays
PHP 12S series

Product Description

The PHP 12S broadband panel is designed as a building block for integration into complex antenna arrays . It is specifically designed to operate on large cross section structures as an alternative to cantilever design or to utilise available aperture.

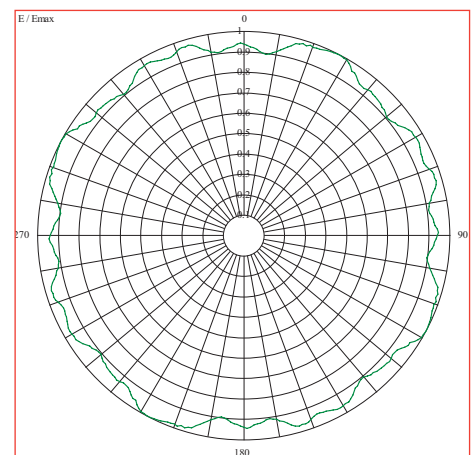
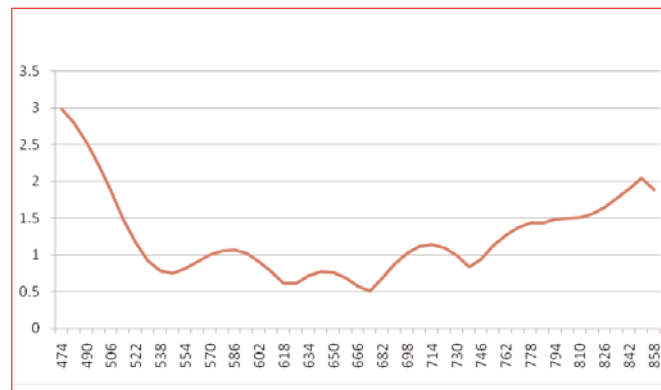
Features/Benefits

- Fully engineered for Digital TV
- Corrosion resistant aluminium construction with fibreglass radome
- Horizontal polarization
- Low wind loading
- Cyclone rated
- Unprecedented pattern circularity
- Full band operation
- High power rating
- Affords greater array access for maintenance and staff safety.
- Array design allows a variety of horizontal radiation patterns with or without vertical beam tilt and null fill, contact RFS for details
- Temperature range -40 to +60° C available
- Can be mounted on existing towers minimising significant capital investment in tower strengthening.



Technical Features

Frequency Band, MHz	470 – 860
Polarisation	Horizontal
Number of levels/bays	Typically 2-12 levels
Gain (Single level omni), dBd	1.5 to 2
Azimuth Pattern	Omnidirectional
Circularity	+/- 2dB (500-860)
Vertical Beamwidth, deg	Dependent upon number of levels
Electrical Downtilt, deg	Typically 0.5° – 1.0°
Nullfill	As required by customer, typically 15% E/Emax at first null
VSWR	< 1.1 across the operating band (with < 1.05 possible on individual channels)
Input Power, max , kW	22 av. per level
Impedance, ohms	50
Pressurization	Antenna inputs and feed system pressurised
Connector: Type + Location	Array typically fed with dual 6 1/8 EIA Line
Dimension (D) max, mm	2560 Dia External
Structure styles and sizes, mm /ft	1524 / 5' F/W Triangular 1220 / 4' F/W Square
Survival Wind Speed, mph / km/h / m/s	150 / 240 / 66.7
Rated Wind Speed, mph / km/h / m/s	100 / 160 / 44.4
Wind load area, (max) EIA-222-F, m ²	2.9m ² per level
Radiating Element Material	Aluminium Alloy (5005)
Radome Material	Fibreglass
Radome Color	White, Orange
Mounting Method	Sidemount
Mounting Hardware Material	Galvanized Steel



All information contained in the present brochure is subject to confirmation at time of ordering