

SC2/SCX2 MOUNT

Installation Instruction



1 / 6

SC2/SCX2 MOUNT

Installation Instruction



2 / 6

NMT-30-1001-00

NMT-30-1001-00

1 Working at ground

~~Working on Pylon~~

2

Clamp Casting X 1

M12x180 X 2

a M12 X 2

b M12 X 4

A13 X 2

5 mm gap

b

3 According to the antenna's orientation (Left or Right)

M10x40 X 3

M10 X 3

W10 X 3

A10.5 X 3

X 1

Right

Left

4

1 mm gap

Lock

X 1

IM8x130 X 1

M8 X 2

A8.4 X 2

IM8x20 X 1

L8.4 X 1

W8 X 1

5

Plastic Washer

V-Bolt M10 X 1

Clamp Casting X 1

8 x 180 X 1

M8 x 25 X 1

M10 X 2

M8 X 2

W10 X 2

W8 X 3

A10.5 X 2

A8 X 1

L8.4 X 2

ø8 X 1

Plastic Washer

L

W

W

SC2/SCX2 MOUNT

Installation Instruction



3 / 6

SC2/SCX2 MOUNT

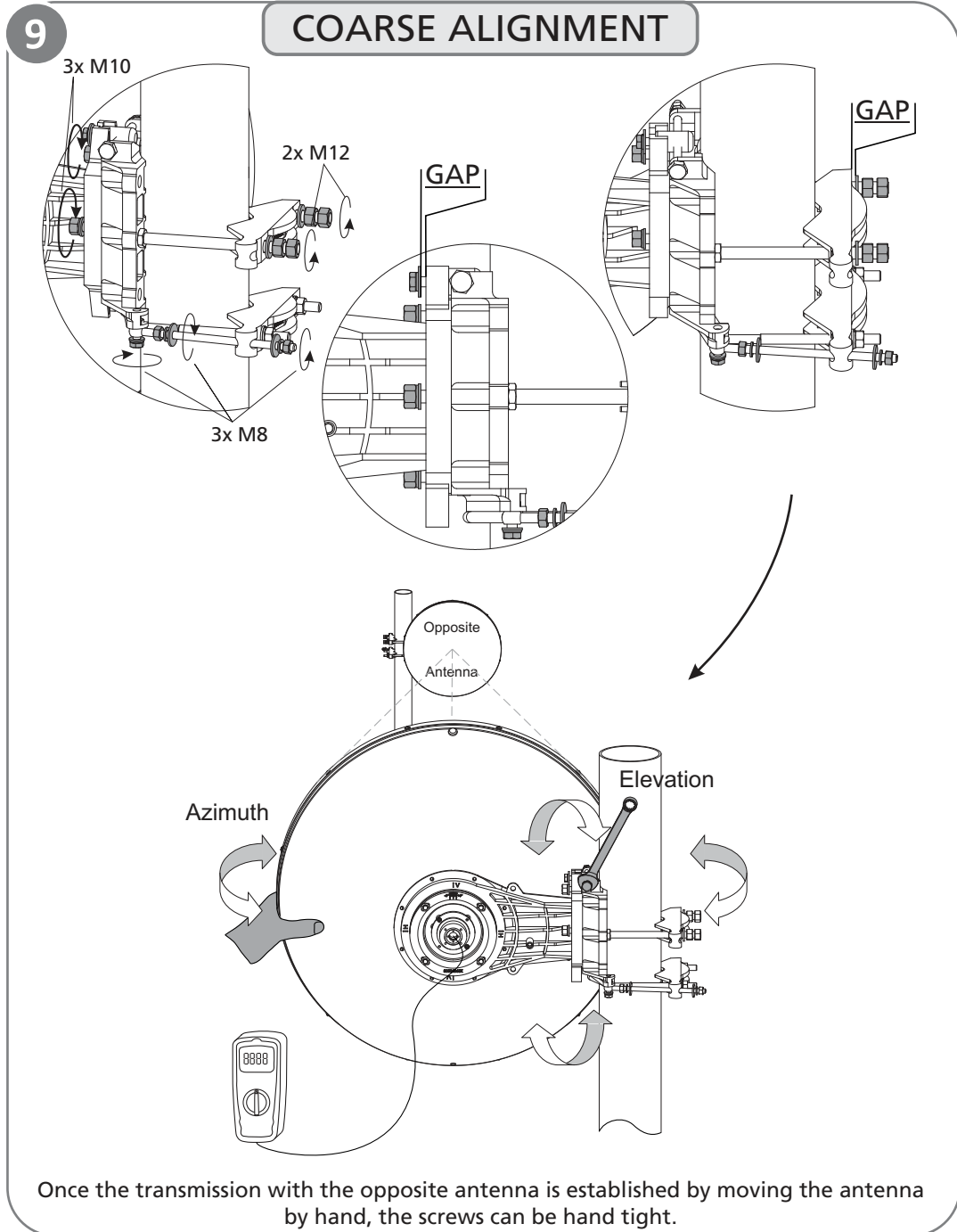
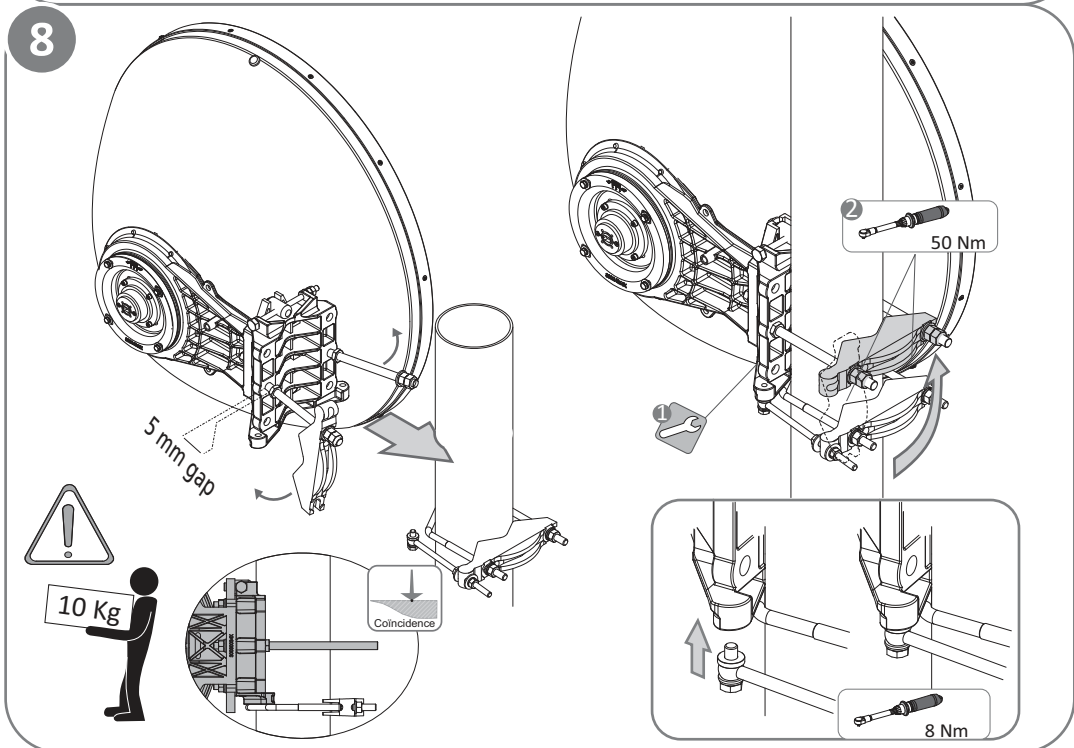
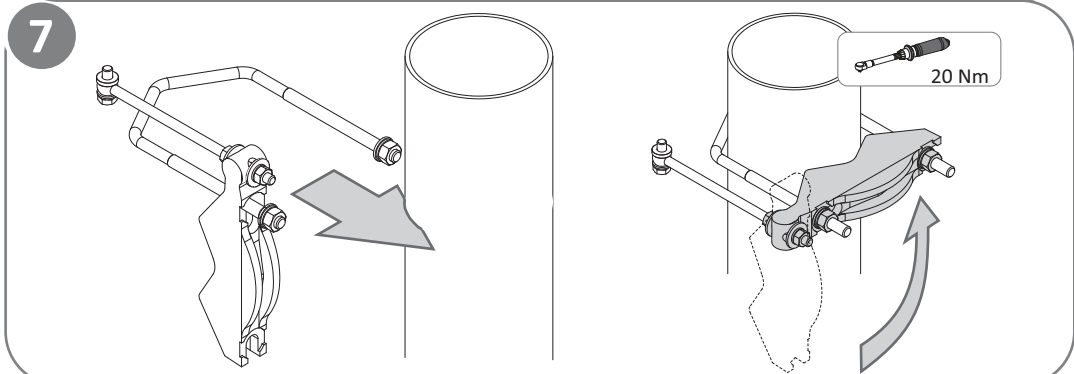
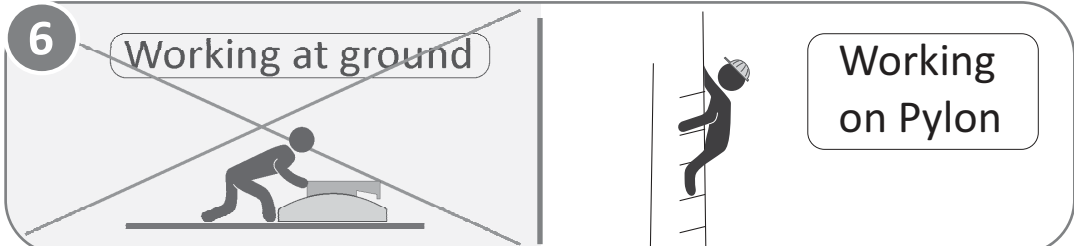
Installation Instruction



4 / 6

NMT-30-1001-00

NMT-30-1001-00



Once the transmission with the opposite antenna is established by moving the antenna by hand, the screws can be hand tight.

SC2/SCX2 MOUNT

Installation Instruction



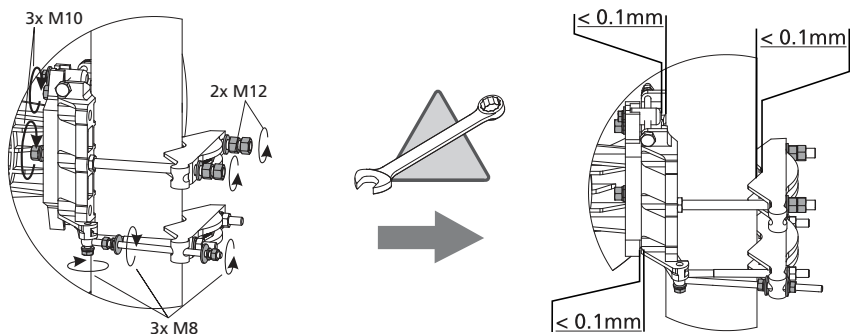
5 / 6

NMT-30-1001-00

10

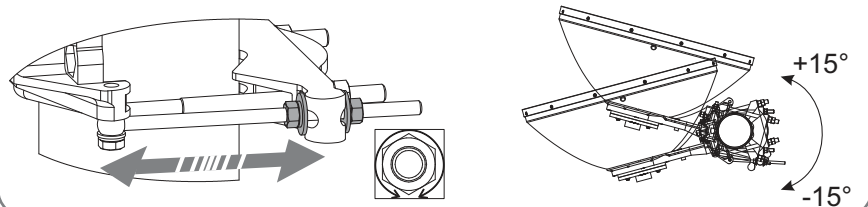
POWER LEVEL ALIGNMENT

Tightened without blocking (< 0.1mm)

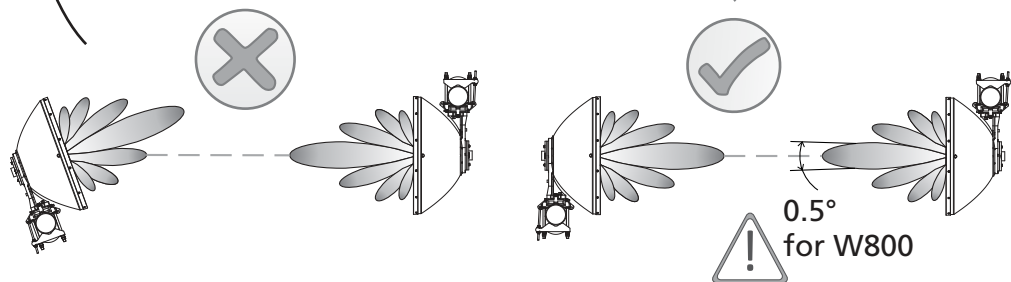
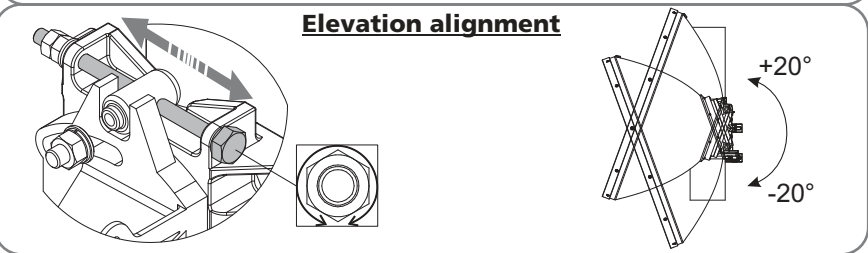


Fine Alignment Procedure

Azimuth alignment



Elevation alignment



SC2/SCX2 MOUNT

Installation Instruction

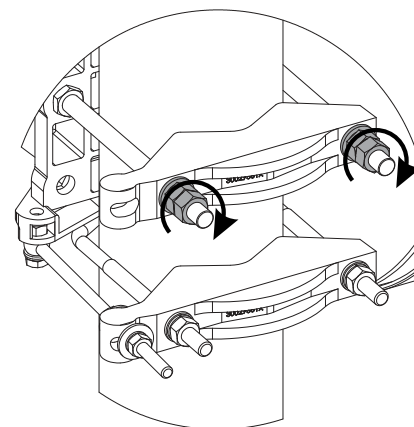


6 / 6

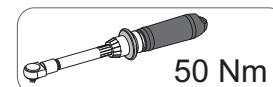
NMT-30-1001-00

11

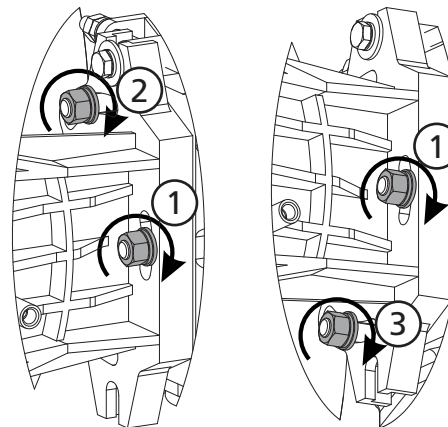
FINAL ANTENNA TIGHTENING



Tightening alternatively the 2 M12 screws until specified torque while checking the Power Level

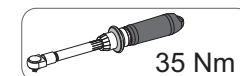


12



First step:
Tight the screw ① while checking the Power Level.

Second step:
Tight alternatively the M10 screws ② and ③ until the specified torque while checking the Power Level.



13

