

Installation Instructions

2 ft Antennas (with M-Mount)

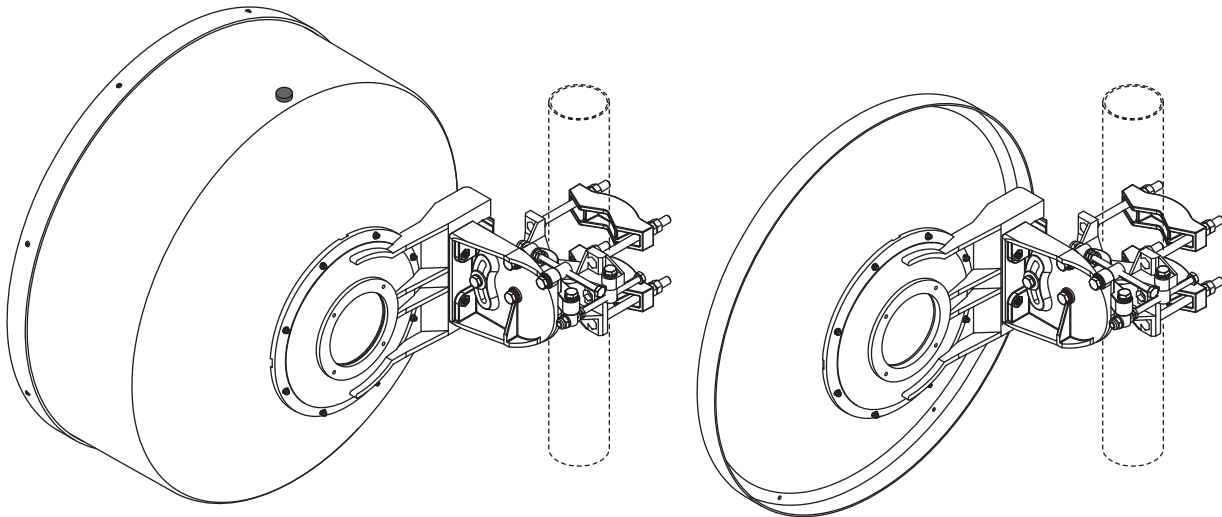
SB, SBX (RFS CompactLine®)

SP, SPF, SPX, SD, SDX, SU, SUX (RFS SlimLine®)

PAL, DA, DAX, UA, UDA, UXA (Microwave)



NMT 391-11(e)



Antenna with integrated shroud
SB, SBX, SD, SDX, SU, SUX
DA, DAX, UA, UDA, UXA

Antenna without shroud
SP, SPX, PAL

These Installation Instructions are valid for antennas in the following version :

- Reflector Ø 0.6 m (2 ft)
- **Single** or **Dual** polarization
- Pipe mount for installation on pipe Ø **48-114 mm** (Equipped with 2 clamps)
- Antenna offset to the left or to the right
- **Standard installation on 114 mm** pipe with offset to the left
- 2 spindles for fine adjustment of **Elevation of ± 30°** and **Azimuth ± 23°**
- Reflector without shroud
- Reflector with shroud, shroud aperture covered by a rigid radome

It is important to mount the antenna exactly as described in this installation instruction.

The installed antenna shall be inspected once per year by qualified personnel.

RFS disclaims any responsibility for the result of improper or unsafe installation.

This installation instruction has been written for qualified, skilled personnel.

We reserve the right to alter details, especially with respect to technical improvement.

1 - Tools required for installation (Tools are not included with antenna)

- Torque wrench from 0,5 to 50 Nm with hex open/ring/allen ends adaptators
- Cross shaped screw driver
- Combination wrenches for hexagon bolts M5(8), M10(16/17), M12(18/19)
- Allen keys M3(2.5), M4(3)
- Personal protection equipment
- Hoisting accessories, ropes, pulleys, spring hooks

() opening of spanner / N° of wrenches

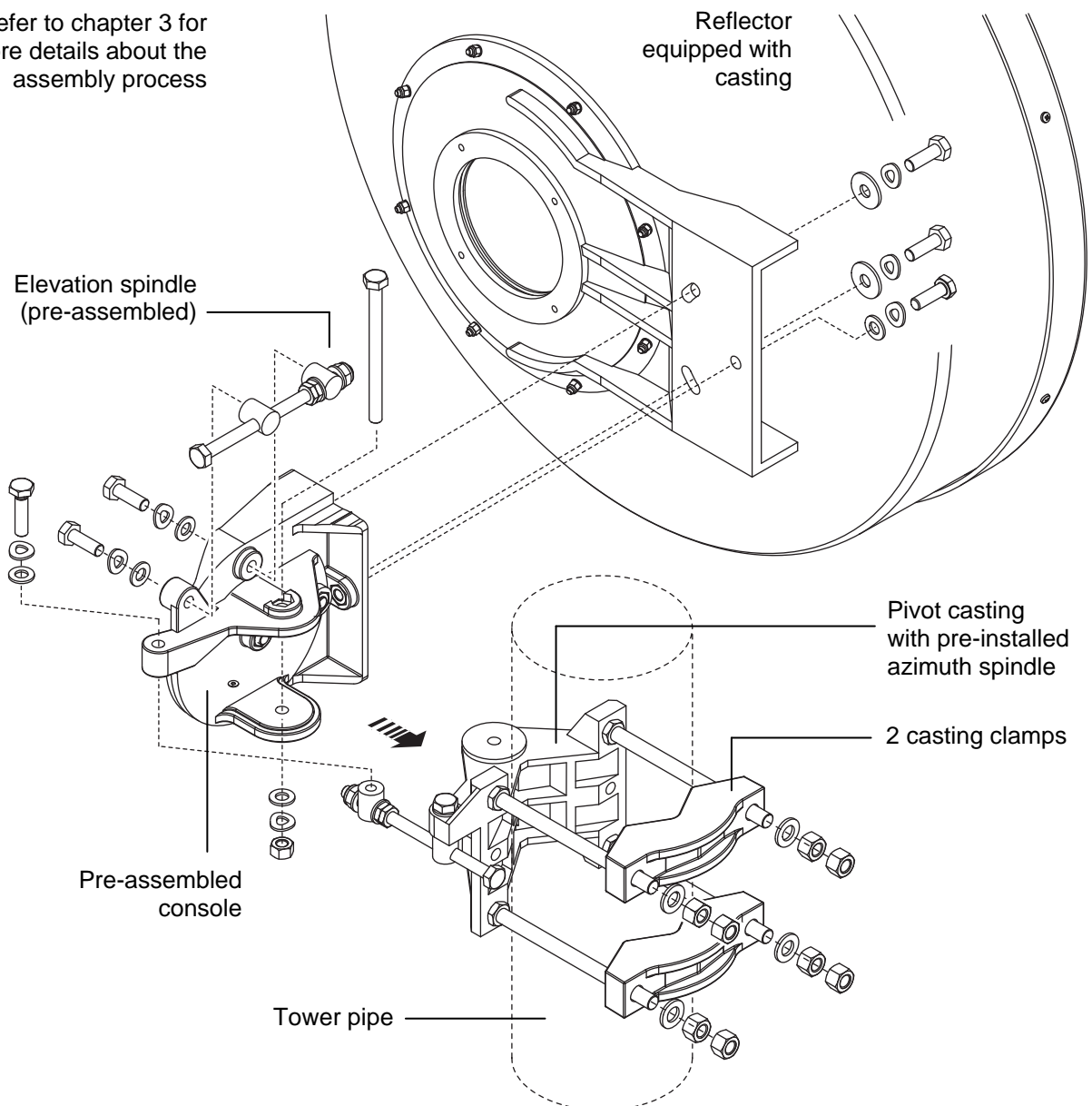
2 - Assembly of the mount



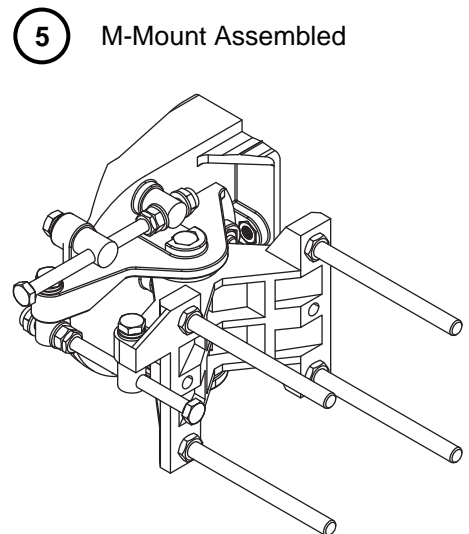
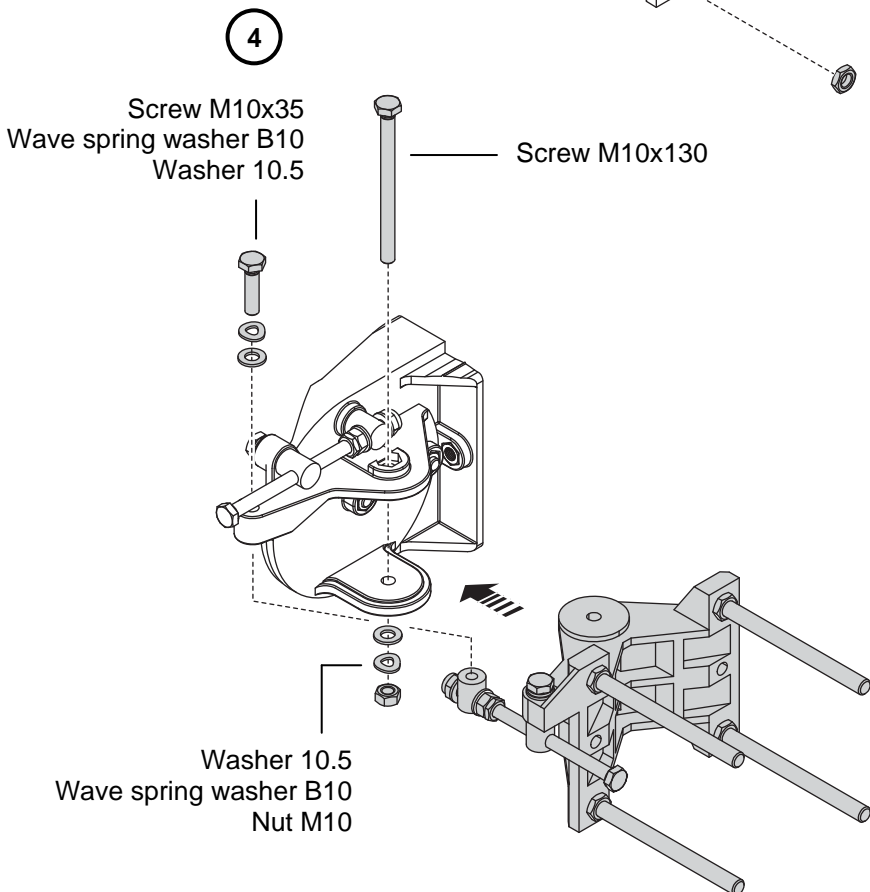
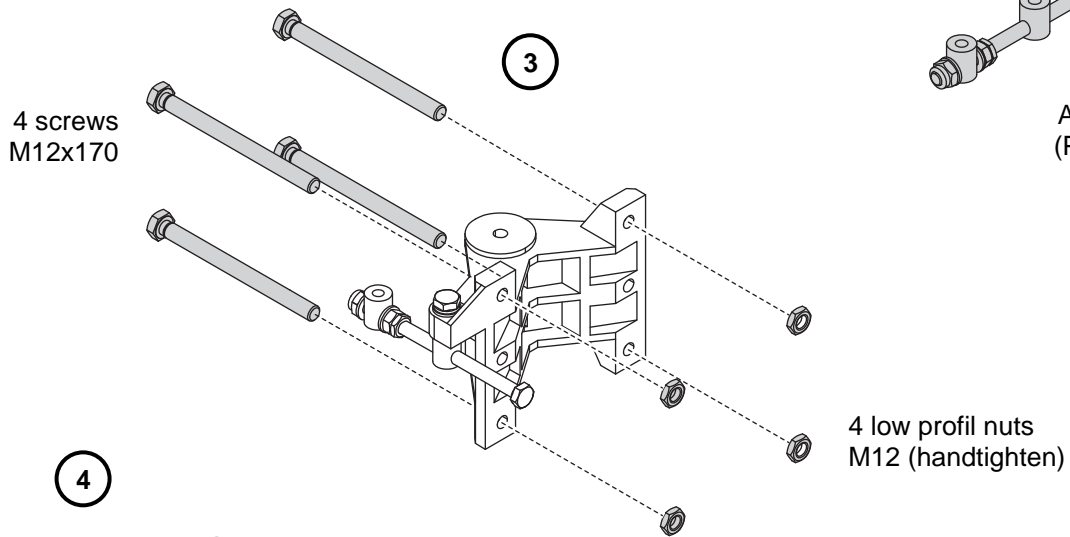
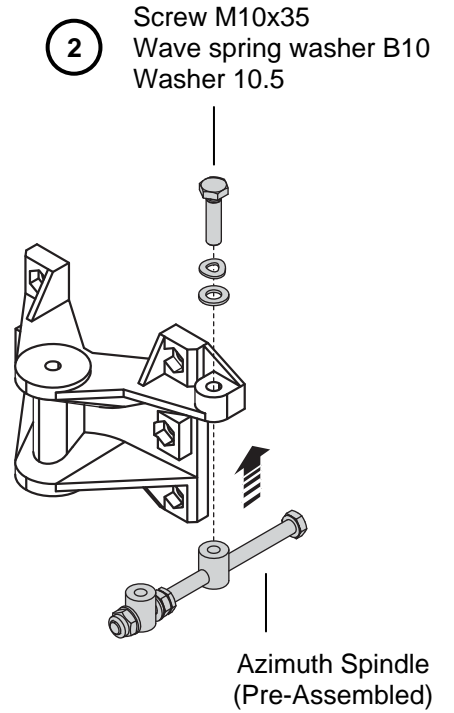
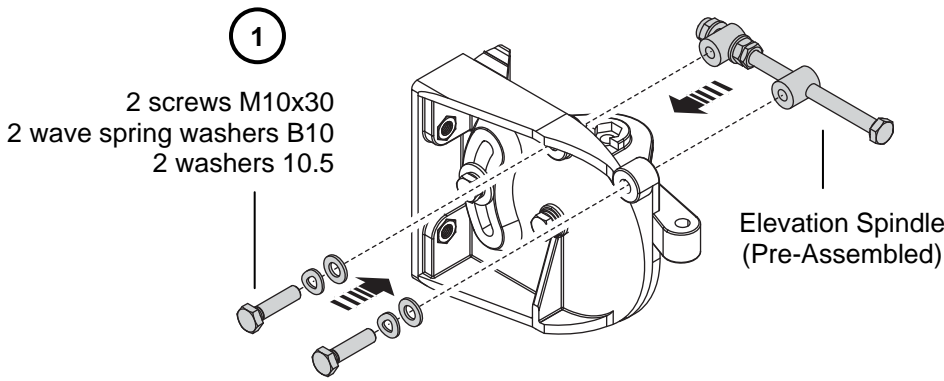
For easy operation of the bolted joints, and correct torque tightening, « Anti Seize » Installation Paste must be applied to all threads of bolts and fine adjustment spindles. After this, keep the lubricated threads free of dust and dirt! (a Torque Table is attached for specifications)

Mount Overview (Antenna with shroud as principle)

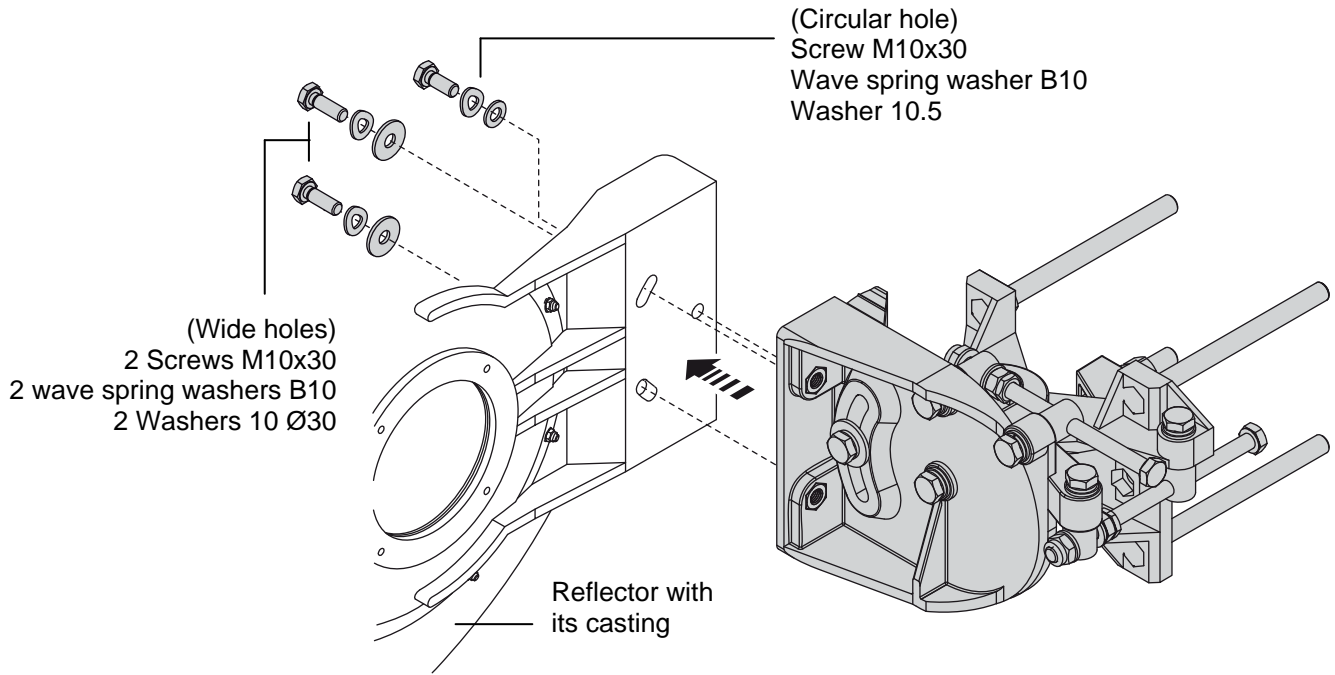
Refer to chapter 3 for more details about the assembly process



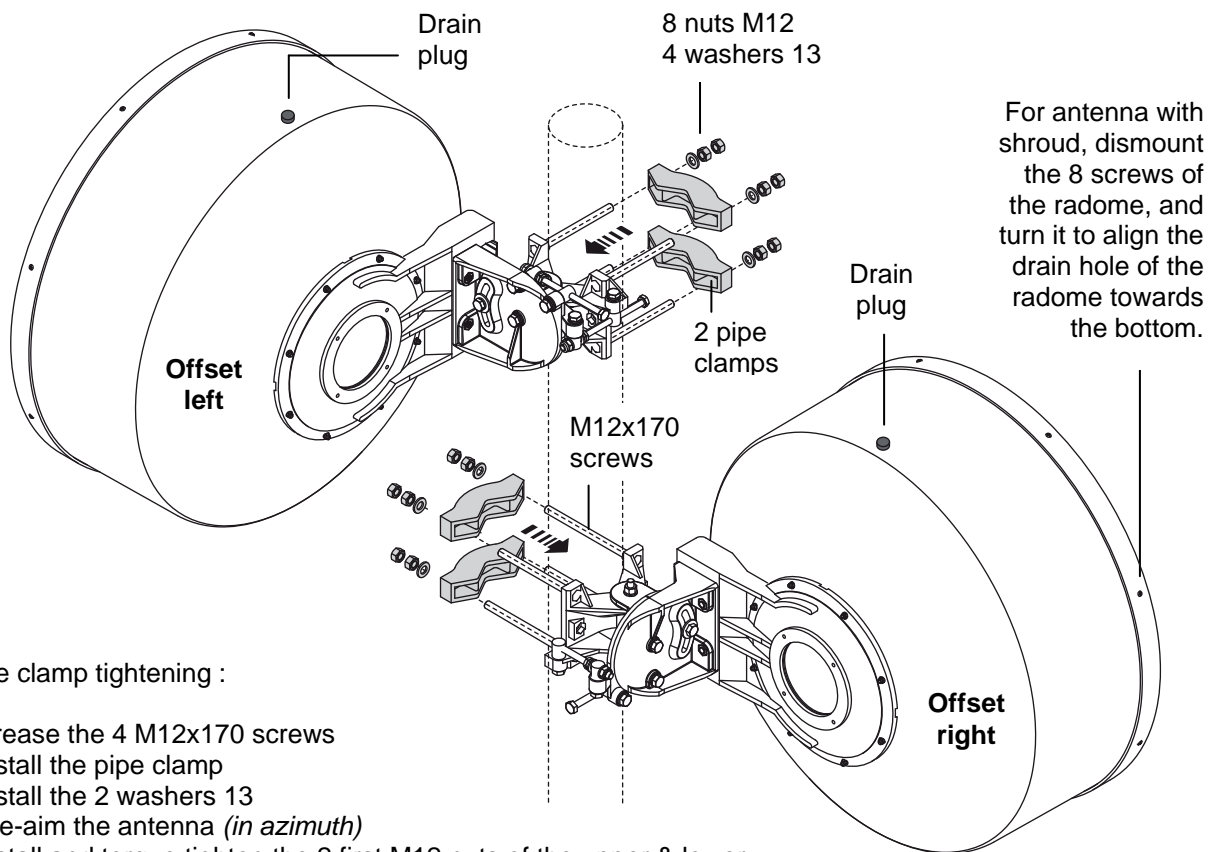
3 - Mount assembly process



4 - Reflector assembly on mount



5 - Antenna installation on pipe (Offset left or right)

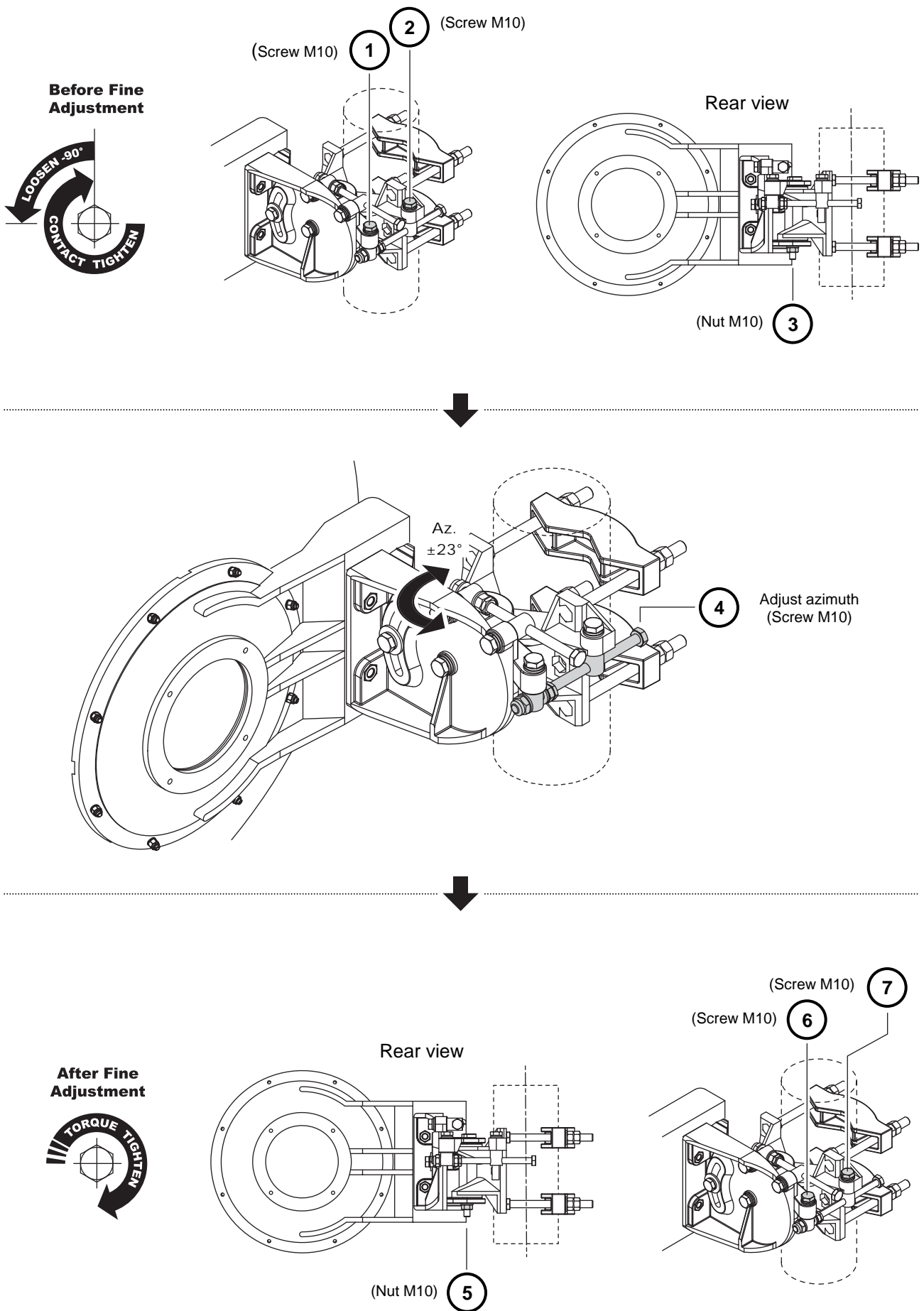


Pipe clamp tightening :

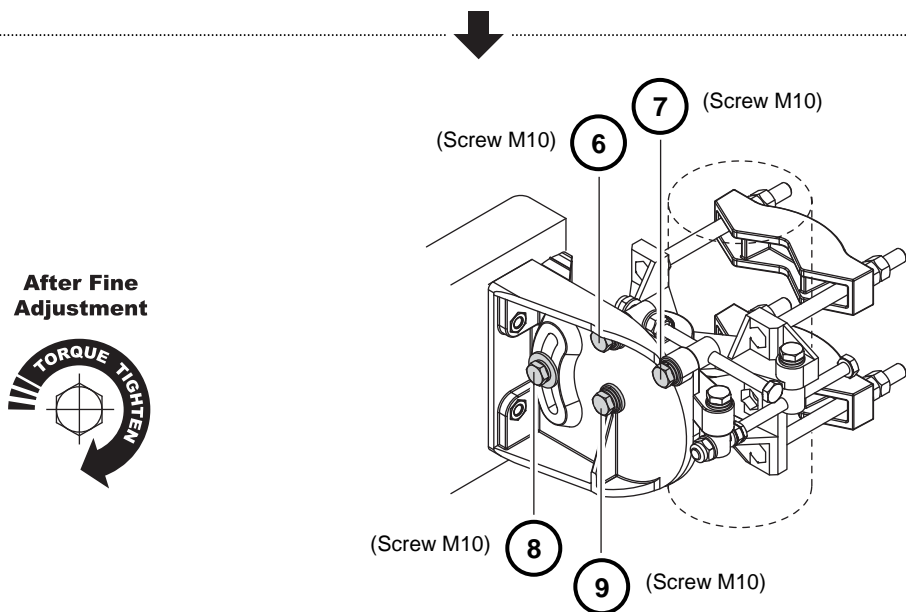
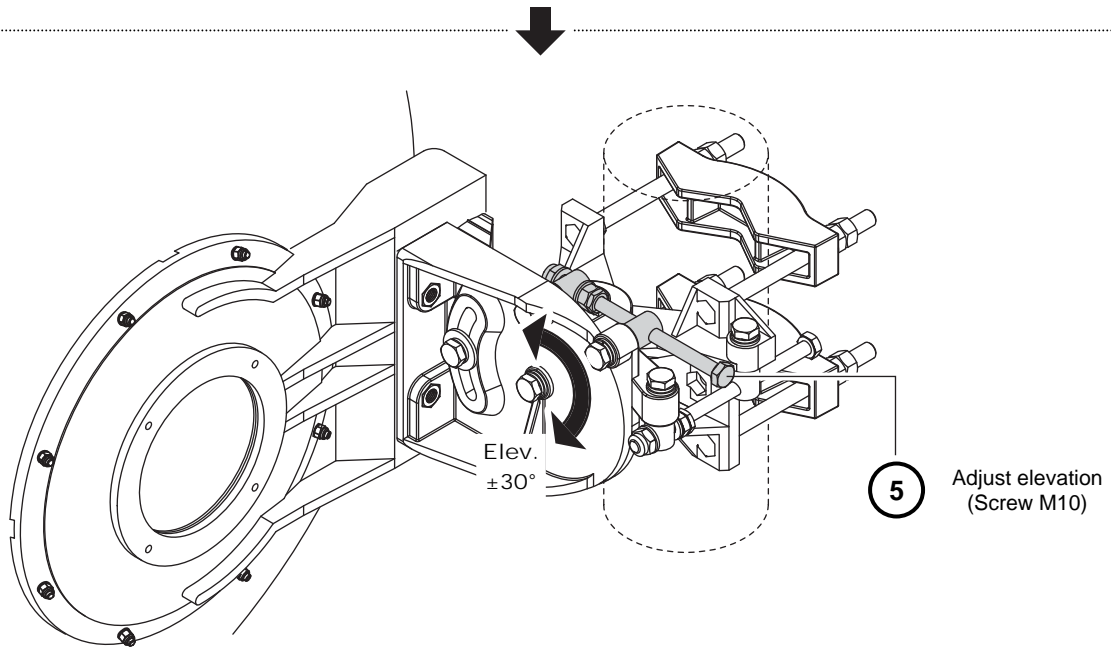
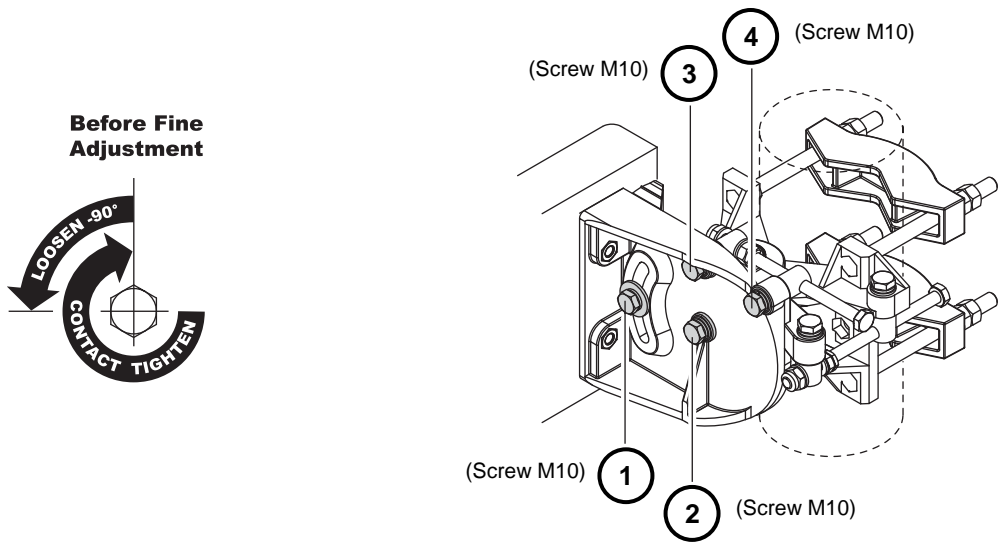
- Grease the 4 M12x170 screws
- Install the pipe clamp
- Install the 2 washers 13
- Pre-aim the antenna (*in azimuth*)
- Install and torque tighten the 2 first M12 nuts of the upper & lower clamps (*see torque table joined*), taking care to dispatch progressive tightening on the 2 nuts of each clamp, as well as on the upper & lower clamps.
- Install and tighten the 4 M12 counter-nuts with a usual wrench

6 - Feed system configuration (See feed installation instructions joined.)

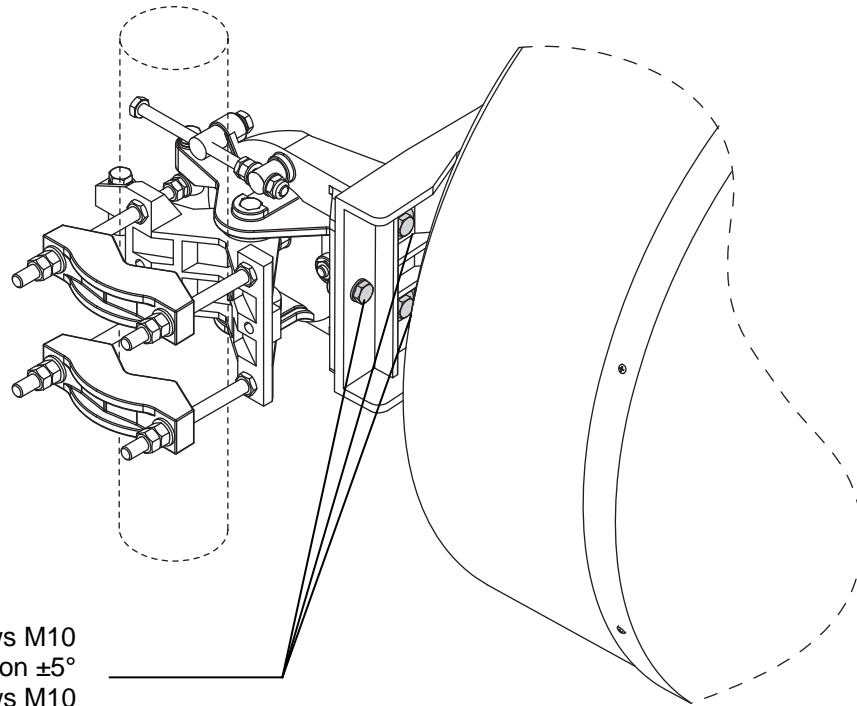
7 - Azimuth Adjustment (Principle for an offset left, feed system not represented)



8 - Elevation Adjustment (Principle for an offset left, feed system not represented)



9 - Polarization Adjustment



Loosen 3 screws M10
Adjust polarization $\pm 5^\circ$
Torque tighten 3 screws M10

Note : an easier polarization adjustment is possible by rotating the feed system $\pm 5^\circ$ (Refer to "Feed" Installation Instructions joined in the antenna packing)

10 - Final Check



When the installation of the antenna has been completed, it is necessary to make sure that the installation instructions have been followed in all aspects. It is especially important to check that all bolted joints are torque tightly locked.

