

**Kit : SMA-SK-6**  
**Additional Sway Bar Kit for SB6-SBX6 antennas**

NMT 738-04(e)

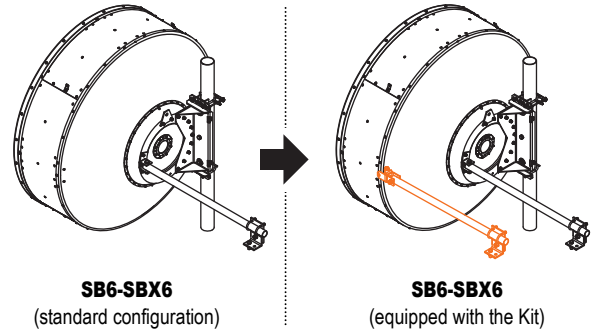


These installation instructions have been written for qualified, skilled personnel. The antenna shall be inspected once per year by qualified personnel to verify proper installation, maintenance, and condition of equipment. It is important to adhere precisely to all parts of the installation instructions. RFS disclaim any responsibility resulting from improper or unsafe installation. RFS reserves the right to alter details at any time, especially with respect to technical improvements.

**1 - Description**

The **SMA-SK-6** additional sway bar kit is designed to be installed only on the SB6 and SBX6 antennas. Its function is to improve the antenna stability in harshest climatic conditions, but does not increase the initial maximum survival windspeed of the antenna ordered. The kit could be installed as well on the left, or on the right rim of the antenna (or both, if you have ordered 2 kits).

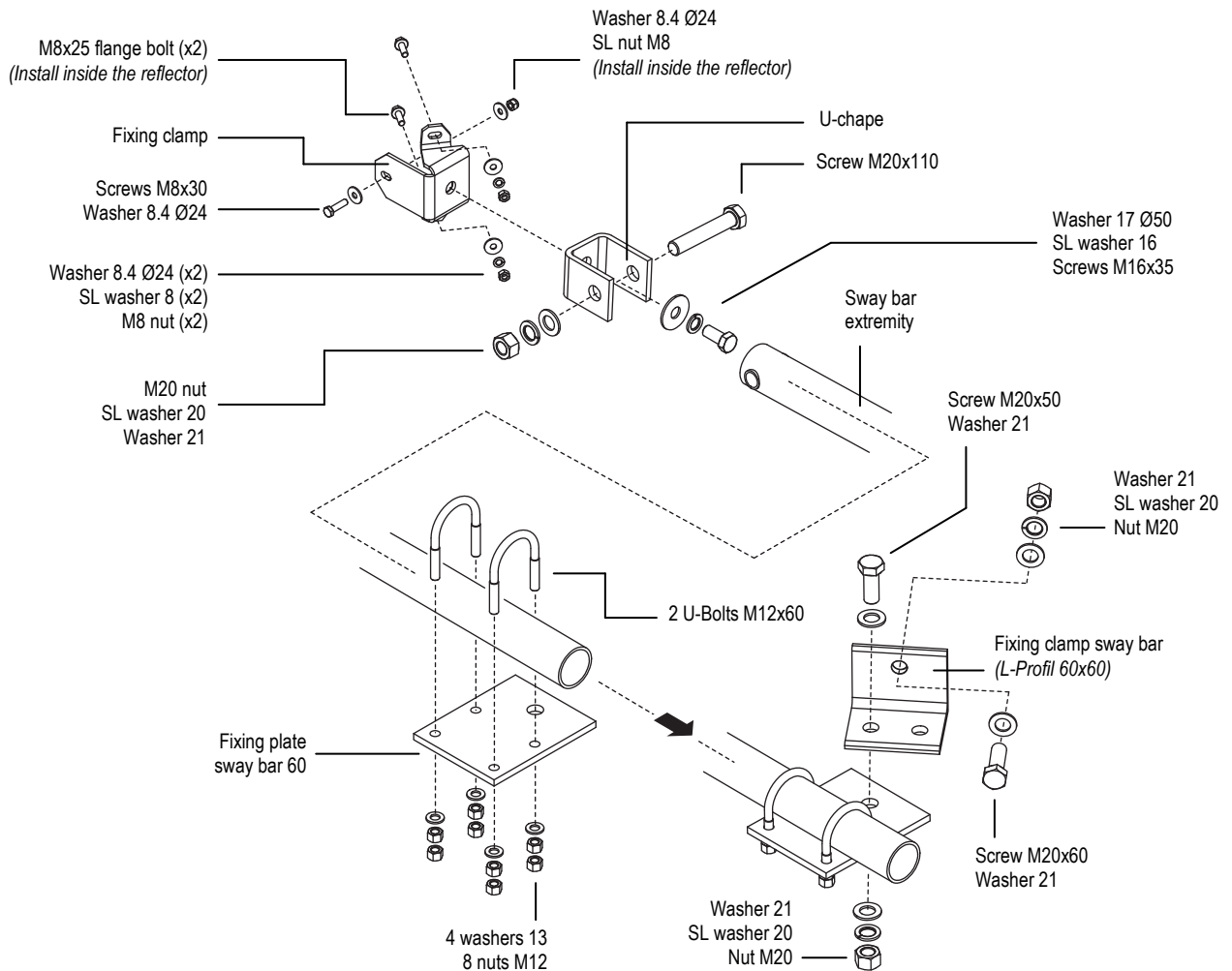
The "fixing clamp" (provided in the kit), must be installed at the ground level, before the radome assembly on the antenna.



**2 - Tools and equipment required for installation**

- Torque wrench 17 to 240 Nm with hex open/ring ends adapters M8(13), M12(19), M20(30)
- Combination wrenches with hex bolts M8(13), M12(19), M20(30)
- Personal protection equipment

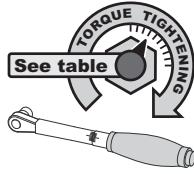
**3 - Overview of the Kit assembly**



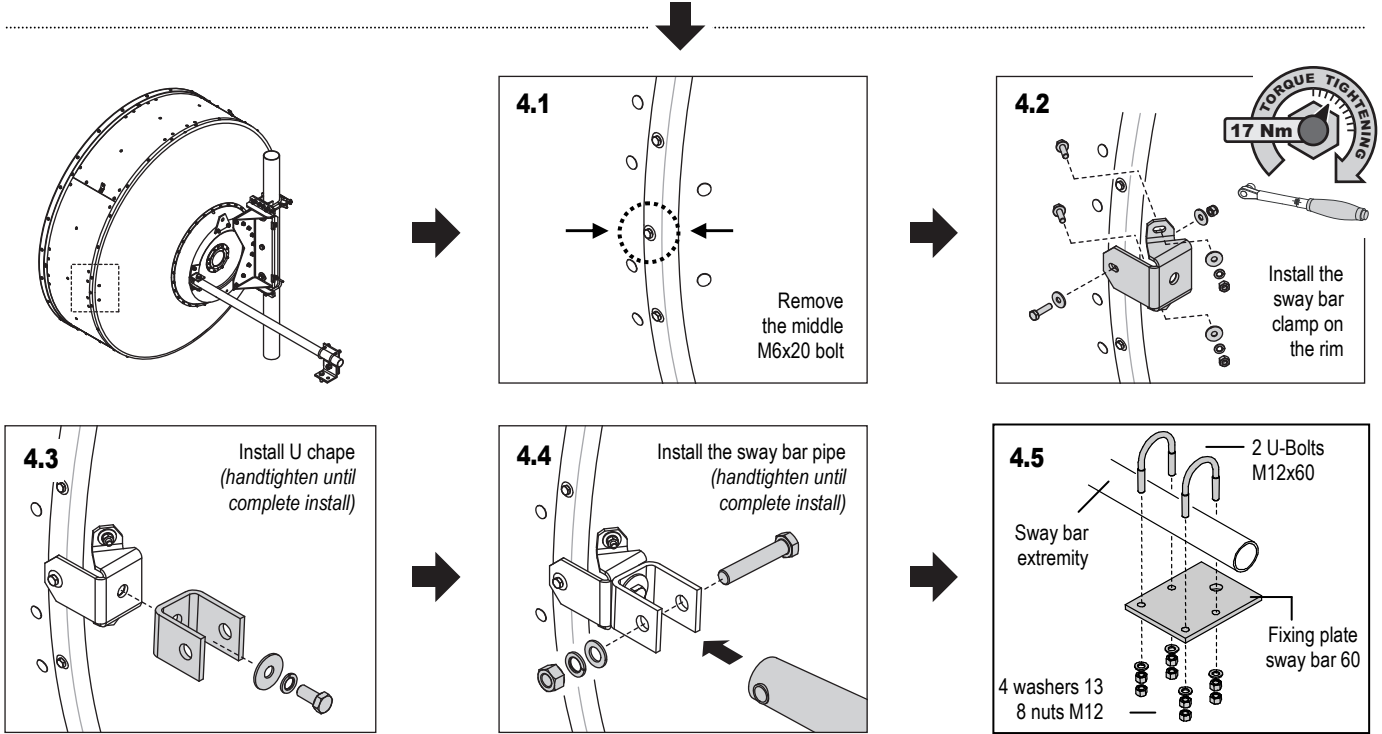
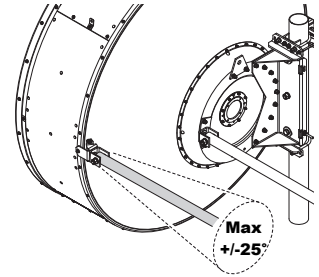
#### 4 - Sway bar fixation on the tower and orientation

Apply grease on threads.

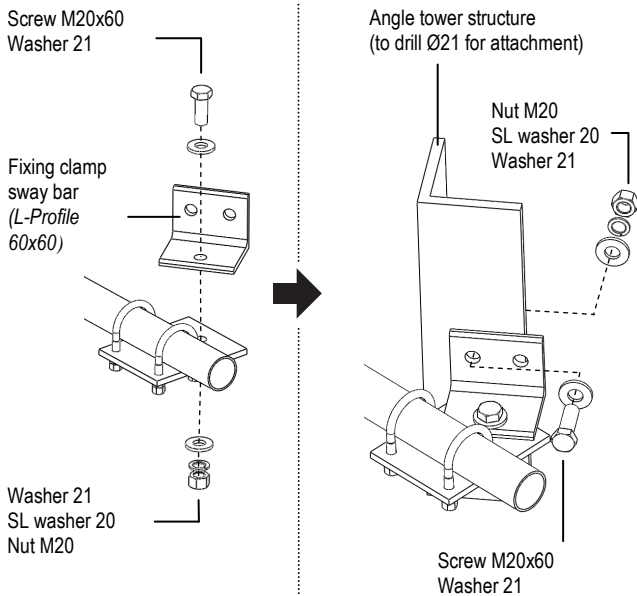
After sway bar positioning, torque tighten all articulation bolted joints



| Torques to apply on GREASED hardware |        |
|--------------------------------------|--------|
| M8                                   | 17 Nm  |
| M12                                  | 50 Nm  |
| M20                                  | 240 Nm |



#### Sway bar installation on tower without sway bar kit option



#### Sway bar installation on tower with sway bar kit option: SMA-SKO-UNIVERSAL-L

