



Radio Frequency Systems' line of high performance coaxial cable connectors are designed specifically to provide the highest quality connector-cable interface while simplifying and speeding up the attachment of connectors to CELLFLEX® coaxial cables. RFS connectors are fully tested for mechanical and electrical compliance specifications. They are available in all popular cable sizes in a variety of mating interfaces. To join two cables with EIA connectors, two identical socket connectors are installed on either end of the cables to be joined, and a coupling element is used to make the connection of the center conductor. The coupling element must be ordered separately with the exception of the S-Line male versions that have a captivated coupling element. Connectors are available in sizes matching the nominal cable size. EIA connectors provide optimal power handling for the complete transmission line system.

FEATURES / BENEFITS

- Single-piece design for Fast and Easy Installation
Reliable and simple attachment avoids unnecessary connector adjustments and provides outstanding performance every time. Saves time and provides cost savings.
- Robust Mechanical Design
Low and consistent intermodulation performance guarantees outstanding system sensitivity.
- Excellent Electrical Performance
Consistent and repeatable low VSWR improves overall system performance and margin and reduces mismatch losses
- Totally Waterproof according to IP 68
Assures safe, long term operation in the harshest of Environments.
- RoHS (EU) and CROHS (China) compliant i.e. can be used on a global basis



RAPID FIT™ Connectors

Technical features**GENERAL SPECIFICATIONS**

Transmission Line Type		Coaxial Cable
Cable Size		1-5/8
Cable Type		Foam Dielectric
Model Series		LCF158-50
Connector Interface		1-5/8" EIA
Connector Type		RAPID FIT™
Sealing Method		Sealing compound ¹⁾
Gender		None

ELECTRICAL SPECIFICATIONS

3rd Order IM Product @ 2x20 Watts	dBc	-156
Maximum Frequency	GHz	2.75
VSWR, Return Loss	VSWR (dB)	0 < f ≤ 1.0 GHz: 1.02 (40) 1.0 < f ≤ 2.7 GHz: 1.04 (34.1) 2.7 < f ≤ 3.7 GHz: 1.06 (30.7)

MECHANICAL SPECIFICATIONS

Plating Outer/Inner		Silver/Silver
Length	mm (in)	108 (4.3)
Outer Diameter	mm (in)	88.5 (3.5)
Inner Contact Attachment		Spring Finger
Outer Contact Attachment		Spring Finger

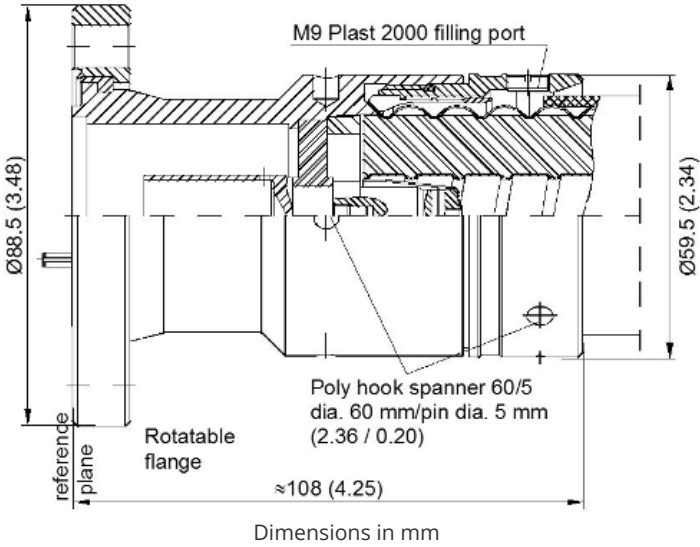


ACCESSORIES

Wrench size front	mm (in)	Poly Hook Spanner Wrench
Wrench size rear	mm (in)	Poly Hook Spanner Wrench
Trimming Tool		TRIM-Series-A

TESTING AND ENVIRONMENTAL

Waterproof Level		IP68
Sealing Volume, cm3 (ounces)	cm ³ (ounces)	20 (0.68)



External Document Links
[Installation Instruction](#)

Notes
1) The sealing compound must be ordered separately.