



OMNI FIT™ high performance connectors are designed for use with both CELLFLEX® (copper) and CELLFLEX® Lite (aluminum) cables. They are designed specifically to provide the highest quality connector-cable interface while simplifying and speeding up connector attachment. All RFS connectors are fully tested for mechanical and electrical compliance to industry specifications. The 4.3-10 connector is an innovative, space-saving RF connection meeting all requirements even under the most severe environmental conditions and not relying on coupling nut torque to meet PIM performance.

**FEATURES / BENEFITS**

- Cost effective two-piece design for safe and easy installation
- Robust mechanical design for low and consistent intermodulation performance i.e. keeps the mobile network performance up, reduces the number of dropped calls and avoids revenue losses
- Standard electrical performance for consistent and repeatable VSWR i.e. ensure network system performance
- Waterproof to IP 68 i.e. no downtime risk, secures revenue
- RoHS (EU) compliant i.e. can be used on a global basis



43MR-SCF12-C03

**Technical features****GENERAL SPECIFICATIONS**

Transmission Line Type		Coaxial Cable
Cable Size		1/2
Cable Type		Foam Dielectric Superflexible
Model Series		SCF12-50 Series
Connector Interface		4.3-10 Right Angle
Connector Type		OMNI FIT™ Standard
Sealing Method		O-ring
Gender		Male

**ELECTRICAL SPECIFICATIONS**

Nominal Impedance, ohms	Ohm	50
3rd Order IM Product @ 2x20 Watts	dBc	-162 ; typical -166
Maximum Frequency	GHz	6
VSWR, Return Loss	VSWR (dB)	0 < f ≤ 2.2 GHz: 1.04 (34.1) 2.2 < f ≤ 2.7 GHz: 1.06 (30.7) 2.7 < f ≤ 3.7 GHz: 1.13 (24.3) 3.7 < f ≤ 5.0 GHz: 1.20 (20.8) 5.0 < f ≤ 6.0 GHz: 1.33 (17)

**MECHANICAL SPECIFICATIONS**

Plating Outer/Inner		Trimetal/Silver
Length	mm (in)	56.8 (2.23)
Outer Diameter	mm (in)	36.4 (1.4)
Inner Contact Attachment		Spring Finger
Outer Contact Attachment		Spring O-Ring

**ACCESSORIES**

Wrench size front	mm (in)	20 (13/16)
Wrench size rear	mm (in)	18 (3/4)

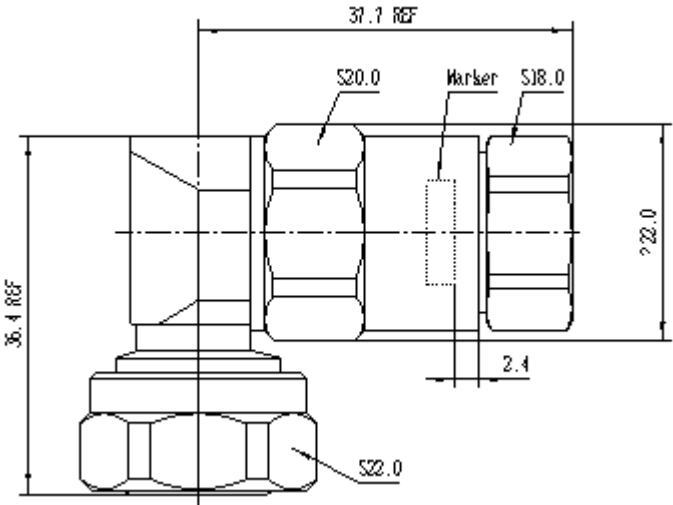


43MR-SCF12-C03

4.3-10 Right Angle Male Connector for 1/2" SuperFlexible Cable, OMNI FIT™ standard

TESTING AND ENVIRONMENTAL

Waterproof Level		IP68
------------------	--	------



43MR-SCF12-C03 Outline drawing

External Document Links

[Application Note](#)

[Installation instruction](#)

Notes