

**716M-LCF78-D01**

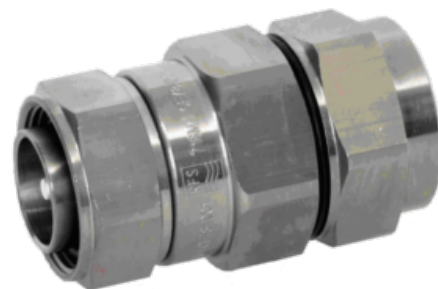
7-16 DIN Male Connector for 7/8" Coaxial Cable, OMNI FIT™ Premium,  
Straight, O-Ring and compression sealing

OMNI FIT™ high performance connectors are designed for use with both CELLFLEX® (copper) and CELLFLEX® Lite (aluminium) cables. They are designed specifically to provide the highest quality connector-cable interface while simplifying and speeding up connector attachment. All RFS connectors are fully tested for mechanical and electrical compliance to industry specifications.

The 7-16 connector is the most rugged RF connection meeting all requirements even under the most severe environmental conditions. Sealing against outer conductor and jacket by means of O-Ring and 360° compression fit. Multifunctional, self-lubricating HighTech polymer assembly locks on cable corrugation, avoids electrochemical potential differences and compression-fits to the jacket.

**FEATURES / BENEFITS**

- Ultra high PIM performance i.e. reduced interference leading to high customer satisfaction
- Two-piece design i.e. visual inspection of interlocking leads to improved installation security
- OMNI FIT™ concept i.e. streamlined order management and reduced stock level
- Watertight sealing in mated and unmated condition, i.e. reduced efforts during installation and improved security during operation
- Unique NiTin plating i.e. extreme resistance against corrosion even under hardest climatic and environmental circumstances
- Multi-thread (Tristart) design i.e. simplified and accelerated tightening process
- RoHS (EU) and CRoHS (China) compliant i.e. can be used on a global basis



OMNI FIT™ Premium Connectors

**Technical features****GENERAL SPECIFICATIONS**

|                        |  |                                  |
|------------------------|--|----------------------------------|
| Transmission Line Type |  | Coaxial Cable                    |
| Cable Size             |  | 7/8                              |
| Cable Type             |  | Foam Dielectric                  |
| Model Series           |  | LCF78-50 Series, RCF78-50 Series |
| Connector Interface    |  | 7-16 DIN                         |
| Connector Type         |  | OMNI FIT™ PREMIUM Straight       |
| Sealing Method         |  | O-Ring + 360° Compression        |
| Gender                 |  | Male                             |

**ELECTRICAL SPECIFICATIONS**

|                                   |           |  |
|-----------------------------------|-----------|--|
| Nominal Impedance, ohms           | Ohm       | 50   |
| 3rd Order IM Product @ 2x20 Watts | dBc       | -163 ; typical -167  |
| Maximum Frequency                 | GHz       | 3.7  |
| VSWR, Return Loss                 | VSWR (dB) | 0 < f ≤ 1.0 GHz: 1.02 (40)<br>1.0 < f ≤ 2.7 GHz: 1.03 (36.6)<br>2.7 < f ≤ 3.7 GHz: 1.06 (30.7) |

**MECHANICAL SPECIFICATIONS**

|                          |         |               |
|--------------------------|---------|---------------|
| Plating Outer/Inner      |         | NiTin/Silver  |
| Length                   | mm (in) | 65.25 (2.57)  |
| Outer Diameter           | mm (in) | 40 (1.57)     |
| Inner Contact Attachment |         | Spring Finger |
| Outer Contact Attachment |         | 360° clamping |



716M-LCF78-D01

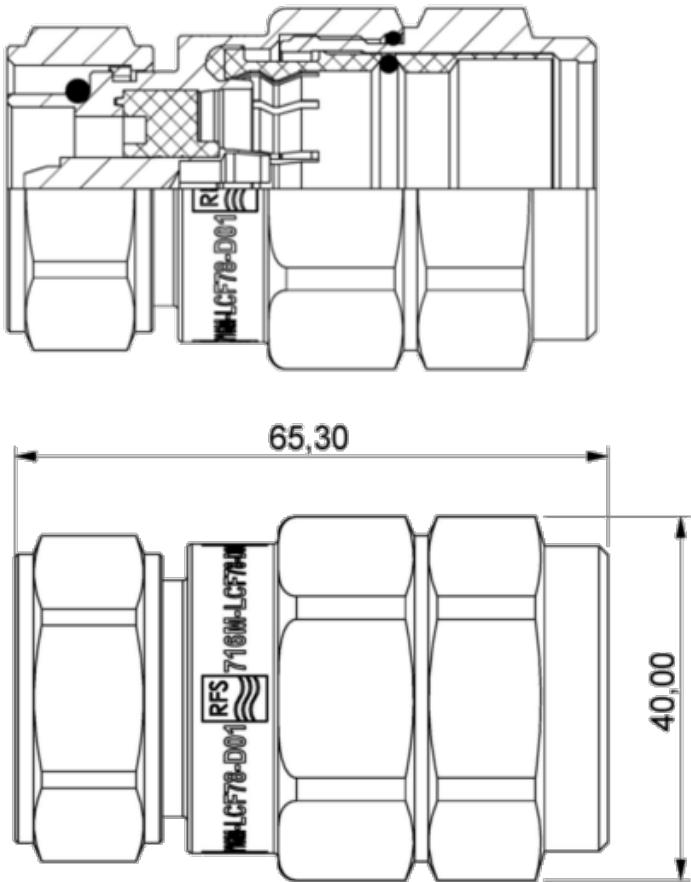
7-16 DIN Male Connector for 7/8" Coaxial Cable, OMNI FIT™ Premium,  
Straight, O-Ring and compression sealing

ACCESSORIES

|                   |         |   |
|-------------------|---------|---|
| Wrench size front | mm (in) | 36 (1-7/16)                                       |
| Wrench size rear  | mm (in) | 36 (1-7/16)                                       |
| Trimming Tool     |         | TRIM-78-L<br>TRIM-SET-L78-D01<br>TRIM-LCF78-D01-A |

TESTING AND ENVIRONMENTAL

|                  |  |      |
|------------------|--|------|
| Waterproof Level |  | IP68 |
|------------------|--|------|



External Document Links  
[Installation Instruction](#)

Notes