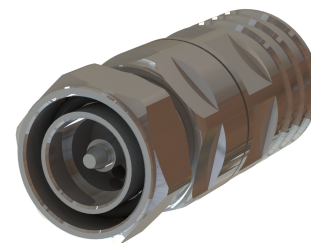




The P02 premium performance coaxial cable connectors are designed specifically to provide the highest quality connector-cable interface while simplifying and speeding up the attachment of connectors to RADIAFLEX® cables. The connectors should provide outstanding value to users because they permit quick, easy and reliable installation at any location, thereby allowing the operator flexibility while saving installation time and money.

FEATURES / BENEFITS

- Designed for Fast and Easy Installation - Reliable and simple attachment avoids unnecessary connector adjustments and provides
- Outstanding performance. Saves time and provides cost savings
- Robust Mechanical Design - Best in class PIM performance
- Excellent Electrical Performance - Low VSWR 201
- Totally Waterproof - Assures safe, long term operation in the harshest of environments.



716M-RA78-P02

External Document Links

- [Installation of Heat Shrink Sleeves](#)
- [Installation Instruction](#)

Notes

- In order to achieve the PIM specs. the use of the trimming tool is mandatory.

Technical features

GENERAL SPECIFICATIONS

Transmission Line Type		Coaxial Cable
Cable Size		7/8
Cable Type		Radiating
Model Series		all RLF, RLK and RAY-Series
Connector Interface		7-16 DIN
Connector Type		Straight
Sealing Method		Shrinking Sleeve
Gender		Male

ELECTRICAL SPECIFICATIONS

Nominal Impedance, ohms	Ohm	50
3rd Order IM Product @ 2x20 Watts	dBc	-155 / -160 (typ.)
Maximum Frequency	GHz	3.7
VSWR, Return Loss	VSWR (dB)	0.0-1.0 GHz: 1.03 (36.6) >1.0-2.7 GHz: 1.06 (30.7) >2.7-3.7 GHz: 1.08 (28.3)

MECHANICAL SPECIFICATIONS

Length	mm (in)	84.7 (3.33)
Outer Diameter	mm (in)	35.5 (1.4)
Body Material		Brass / Plating: Tri Metal
Inner Contact Material		Copper / Plating: Silver
Inner Contact Attachment		Spring Finger / Plating: Silver
Outer Contact Attachment		Spring Loop / Plating: Silver

ACCESSORIES

Wrench size front	mm (in)	SW 32 (1.26)
Wrench size rear	mm (in)	SW 32 (1.26)
Trimming Tool		TRIM-SET-R78-P02



TESTING AND ENVIRONMENTAL

Waterproof Level		IP68
INSTALLATIONTEMPERATURECF	°C(°F)	-25 to 60 (-13 to 140)
STORAGETEMPERATURECF	°C (°F)	-70 to 85 (-94 to 185)
OPERATIONTEMPERATURECF	°C(°F)	-40 to 85 (-40 to 185)

image not found or type unknown

