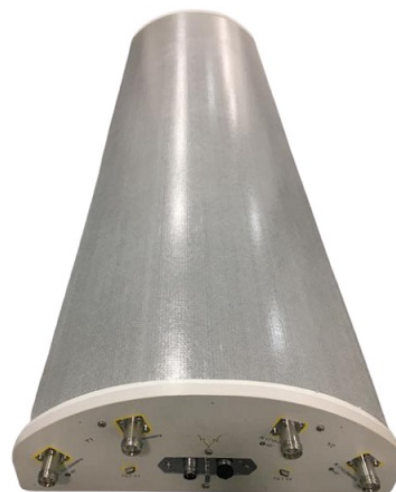




**FEATURES / BENEFITS**

- 2 ports + 2 ports, each 33deg. beam based on 1 cross pol system (1710-2690 MHz), separated by 60deg
- Integrated and field replaceable SRET
- ACU HW Version: 2.02
- Compliant with AISG V2.0 and 3GPP
- Inter distance between both clamps of 8-Port Twin Beam : < 1.8m



**Technical features**

**ELECTRICAL SPECIFICATIONS**

Electrical Specification Header		High Band Array (1710-2690 MHz) [Y1]		
Frequency Band	MHz	1710-2170	2300-2400	2490-2690
Gain Typical	dBi	20	20.6	20.8
Gain Over all Tilts	dBi	18.9 +/- 1.1	20.1 +/- 0.5	20.1 +/- 0.7
Azimuth Beamwidth 3dB	Deg	39.1 +/- 5	33.6 +/- 1.5	30.1 +/- 1
Elevation Beamwidth 3dB	Deg	7.7 +/- 1	6.1 +/- 0.4	6 +/- 0.1
Beam Center	Deg	+/-27	+/-27	+/-27
F/B at +/-30deg Total Power	dB	22.2	23	21
First Upper Side Lobe Suppression	dB	20	22	19.5
Electrical Downtilt	Deg	2 to 12		
Cross Polar Isolation	dB	28		
Interband Isolation	dB	28		
Beam Isolation	dB	30		
VSWR	-	1.5		
Passive Intermodulation (3rd Order, 2 x 43dBm)	dBc	-153		
Maximum Effective Power per Port	Watt	250		



**ELECTRICAL SPECIFICATIONS**

Electrical Specification Header		High Band Array (1710-2690 MHz) [Y2]		
Frequency Band	MHz	1710-2170	2300-2400	2490-2690
Gain Typical	dBi	20.1	20.6	20.8
Gain Over all Tilts	dBi	19 +/- 1.1	20.1 +/- 0.5	20.1 +/- 0.7
Azimuth Beamwidth 3dB	Deg	39.1 +/- 5	33.6 +/- 1.5	30.1 +/- 1
Elevation Beamwidth 3dB	Deg	7.7 +/- 1	6.1 +/- 0.5	6 +/- 0.1
Beam Center	Deg	+/-27	+/-27	+/-27
F/B at +/-30deg Total Power	dB	23	23	20
First Upper Side Lobe Suppression	dB	21	21.7	18
Electrical Downtilt	Deg	2 to 12		
Cross Polar Isolation	dB	28		
Interband Isolation	dB	28		
Beam Isolation	dB	30		
VSWR	-	1.5		
Passive Intermodulation (3rd Order, 2 x 43dBm)	dBc	-153		
Maximum Effective Power per Port	Watt	250		

**ELECTRICAL SPECIFICATIONS**

Impedance	Ohm	50
Polarization	Deg	±45°

**MECHANICAL SPECIFICATIONS**

Dimensions - H x W x D	mm (in)	1499 x 396 x 160 (59 x 15.6 x 6.3)
Weight (Antenna Only)	kg (lb)	22.5 (49.6)
Weight (Mounting Hardware only)	kg (lb)	4.5 (9.9)
Packing size- HxWxD	mm (in)	1690 x 520 x 320 (66.5 x 20.5 x 12.6)
Shipping Weight	kg (lb)	32.9 (72.5)
Connector type		4 x 4.3-10 female/bottom + 2 AISG connectors (1 male, 1 female)
Radome Material / Color		Fiberglass / Light Grey RAL7035

**TESTING AND ENVIRONMENTAL**

Temperature Range	°C (°F)	-40 to 60 (-40 to 140 )
Lightning protection		Direct Ground
Survival/Rated Wind Velocity	km/h	200 (150 )
Wind Load @Rated Wind Front	N	468
Wind Load @Rated Wind Side	N	668
Wind Load @Rated Wind Rear	N	760

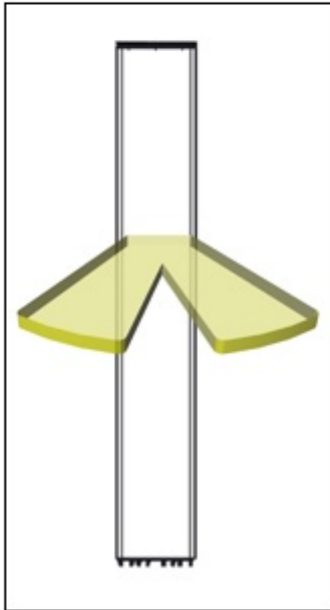
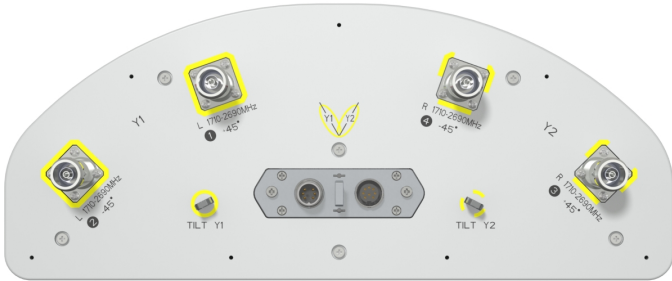
**ORDERING INFORMATION**

Order No.	Configuration	Mounting Hardware	Mounting pipe Diameter	Shipping Weight
APXV3LL14AS_43-C-I20	Internal RET(ACU-I20-B2)	APM50-3	50-115mm	32.9 Kg



APXV3LL14AS\_43-C-I20

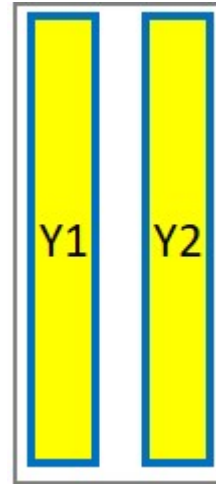
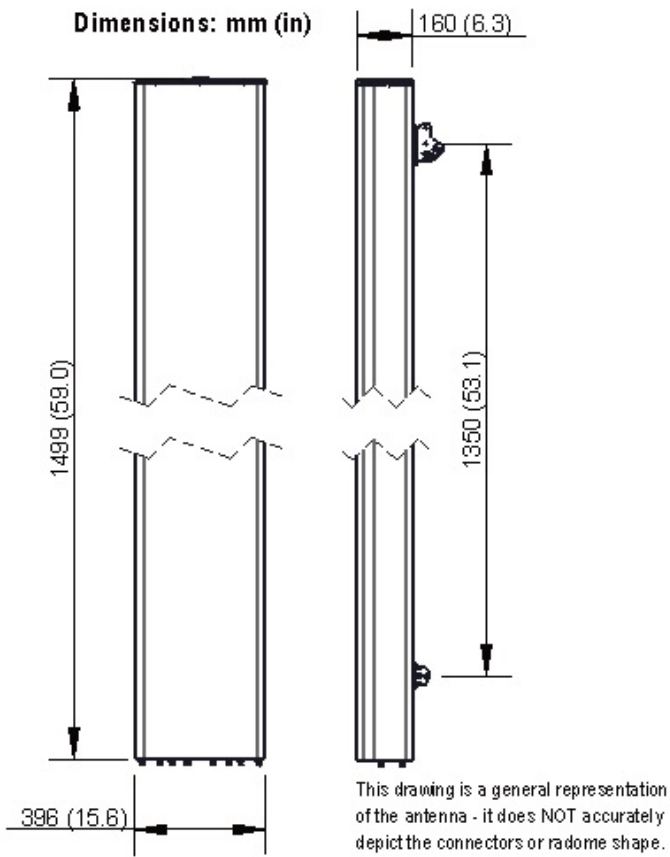
4-Ports, X-Pol, Twin Beam Antenna, 1.4m, 2x 1710-2690MHz, 33deg, Integrated RET





APXV3LL14AS\_43-C-I20

4-Ports, X-Pol, Twin Beam Antenna, 1.4m, 2x 1710-2690MHz, 33deg, Integrated RET



External Document Links

[APM50\\_Series\\_Installation\\_Instructions](#)

Notes

- All electrical parameters are compliant with BASTA NGMN 11.1 requirements.
- For addition please click "External Document Links".
- **Radiating patterns:** [Request pattern files](#)