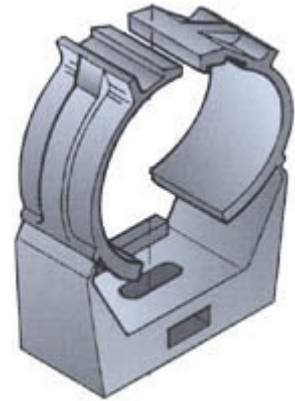




Clic Clamp for RADIAFLEX RE60, Polyamide, Grey, Halogen Free, Fire Class UL94HB

**FEATURES / BENEFITS**

Safe and efficient installation of RADIAFLEX® cable with clic-clamps. Simple mounting by using wall plugs and screws. Simply push in by hand, clamp will grip and lock by applying slight pressure.



clic\_clamp\_TI

External Document Links

Notes

**Technical features**

**GENERAL SPECIFICATIONS**

Product Line		Radiating Cable Accessories
Product Type		Hanger
Hanger Type		Clic clamp
Transmission Line Type		Radiating Waveguide RE60 in combination with Clamp Lining LIN-60/48-H
Cable Type		Radiating Cable
Color		Grey

**MECHANICAL SPECIFICATIONS**

Cable Size		RE60
Number of Cable / Waveguide Runs		1
Material		Polyamide

**TESTING AND ENVIRONMENTAL**

Fire Class		UL94 HB
------------	--	---------

**TEMPERATURE SPECIFICATIONS**

Installation Temperature	°C (°F)	-20 to 80 (-4 to 176)
Operation Temperature	°C (°F)	-50 to 85 (-58 to 185)
Storage Temperature	°C (°F)	-50 to 85 (-58 to 185)

**PACKAGING INFORMATION**

Package Quantity		20
------------------	--	----



**CC-RE60-4**

Clic clamp for RADIAFLEX® RE60

