

**D120-150FP**

Connector for FLEXWELL® elliptical waveguide E150, PDR120 Flange

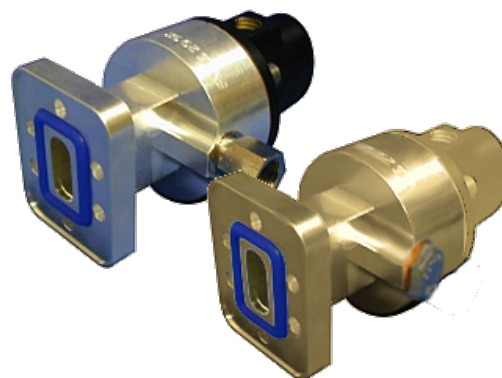
Standard connector for FLEXWELL® elliptical waveguide E150 with PDR120 flange, Plast 2000 sealed
frequency range: 13.4 - 14.5 GHz

FEATURES / BENEFITS**Superior Design**

- Due to the precise manufacturing no tuning screws are necessary
- The terminations are brass passivated for good electrical performance
- A gas inlet is included

Quick & Easy Installation

- Different flaring tools are available
- No tuning in the field

**Technical features****STRUCTURE**

Transmission Line Type		Elliptical Waveguide
Cable Type		E150
Model Series		E150 Series
Connector Frequency Range	GHz	13.4 - 14.5
Connector Type		Fixed
Sealing Method		Plast 2000
Plating Outer/Inner		Brass
Waterproof Level		IP68
Gas Inlet		G 1/8
Connector Interface		PDR120

MECHANICAL SPECIFICATIONS

Length	mm (in)	85 (3.4)
Outer Diameter	mm (in)	45 (1.8)
Weight	kg (lb)	0.4 (0.88)
Sealing Volume	cm ³ (ounces)	20 (0.68)

External Document Links[Installation Instruction](#)**Notes**

Sealing component PLAST 2000 is **not** part of the connector delivery and must be ordered separately.