

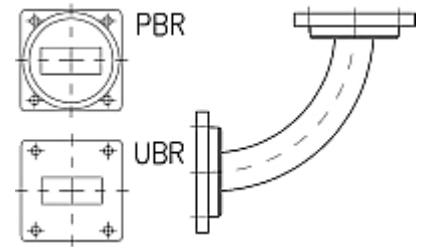


Rectangular Waveguide R 100 E-Bend 90 degree,  
flanges PBR/UBR 100, f= 8.20-12.50 GHz,  
VSWR max 1.06, A=75mm (2.9"),  
gasket and screw kit enclosure  
made of brass

**FEATURES / BENEFITS**

Waveguide installation

- The rectangular waveguide component provides simple installation in particular difficult cases
- It can be installed where less space is available
- It provides outstanding electrical performance



Picture only for illustration

**Technical features****STRUCTURE**

|   |  |                 |
|---|--|-----------------|
| Type of Rectangular Waveguide Component |  | Bend in E-Plane |
| Waveguide Size IEC (EIA)                |  | R100 (WR90)     |
| Flange A                                |  | PBR100          |
| Flange B                                |  | UBR100          |
| Flange Finish                           |  | Brass un-plated |
| Package Quantity                        |  | 1               |

**ELECTRICAL SPECIFICATIONS**

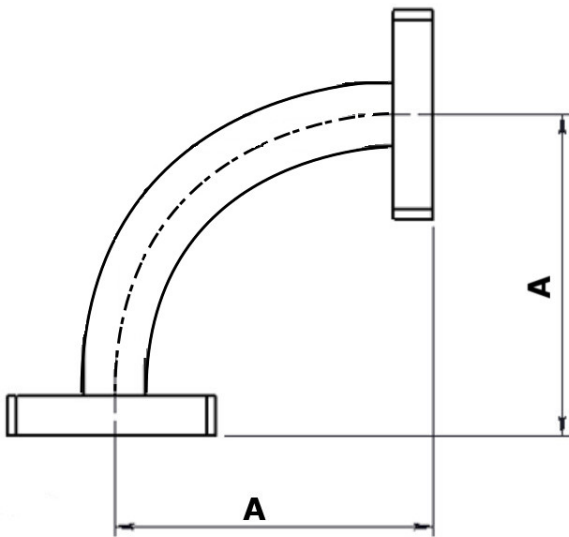
|                                 |           |             |
|---------------------------------|-----------|-------------|
| Minimum Return Loss (max. VSWR) | dB (VSWR) | 30.7 (1.06) |
|---------------------------------|-----------|-------------|

**MECHANICAL SPECIFICATIONS**

|            |         |          |
|------------|---------|----------|
| Bend/Twist | degree  | 90       |
| Length     | mm (in) | 75 (2.9) |

**MATERIAL**

|          |  |               |
|----------|--|---------------|
| Material |  | Brass         |
| Color    |  | Grey RAL 7001 |



Design with accurate waveguide bend

External Document Links

Notes