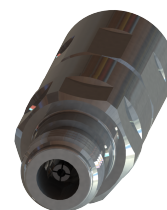




NF-LCF12-E01

N Female Connector for 1/2" Coaxial Cable, OMNI FIT™ Premium, Straight, O-Ring and 360° sealing rubber



OMNI FIT™ high performance connectors are designed for use with both CELLFLEX® (copper) and CELLFLEX® Lite (aluminium) cables. They are designed specifically to provide the highest quality connector-cable interface while simplifying and speeding up connector attachment. All RFS connectors are fully tested for mechanical and electrical compliance to industry specifications.

The N connector meets all technical requirements and covers high frequencies as well as legacy applications. Sealing against outer conductor and jacket by means of o-ring and 360° compression fit.

FEATURES / BENEFITS

- Ultra high PIM performance i.e. reduced interference leading to high customer satisfaction
- Two-piece design i.e. visual inspection of interlocking leads to improved installation security
- OMNI FIT™ concept i.e. streamlined order management and reduced stock level
- Watertight sealing in mated and unmated condition, i.e. reduced efforts during installation and improved security during operation
- Tri metal alloy plating i.e. extreme resistance against corrosion even under hardest climatic and environmental circumstances
- Multi-thread (Tristart) design i.e. simplified and accelerated tightening process
- RoHS (EU) and CRoHS (China) compliant i.e. can be used on a global basis

Technical features

GENERAL SPECIFICATIONS

| | | |
|------------------------|--|----------------------------|
| Transmission Line Type | | Coaxial Cable |
| Cable Size | | 1/2 |
| Cable Type | | Foam Dielectric |
| Model Series | | LCF12-50 Series |
| Connector Interface | | N |
| Connector Type | | OMNI FIT™ PREMIUM Straight |
| Sealing Method | | sealing rubber |
| Gender | | Female |

ELECTRICAL SPECIFICATIONS

| | | |
|-----------------------------------|-----------|--|
| Nominal Impedance, ohms | Ohm | 50 |
| 3rd Order IM Product @ 2x20 Watts | dBc | -158 ; typical -162 |
| Maximum Frequency | GHz | 6.0 |
| VSWR, Return Loss | VSWR (dB) | 0 $\leq f \leq 1.0 \text{ GHz}$: 1.02 (40) 1.0 $\leq f \leq 2.2 \text{ GHz}$: 1.03 (37) 2.2 $\leq f \leq 2.7 \text{ GHz}$: 1.03 (36) 2.7 $\leq f \leq 3.8 \text{ GHz}$: 1.07 (30) 3.8 $\leq f \leq 5.0 \text{ GHz}$: 1.11 (26) 5.0 $\leq f \leq 6.0 \text{ GHz}$: 1.15 (23) |

MECHANICAL SPECIFICATIONS

| | | |
|--------------------------|---------|--------------------------|
| Plating Outer/Inner | | Tri metal alloy / Silver |
| Length | mm (in) | 64 (3) |
| Outer Diameter | mm (in) | 24 (1) |
| Inner Contact Attachment | | Spring Finger |
| Outer Contact Attachment | | 360° clamping |



NF-LCF12-E01

N Female Connector for 1/2" Coaxial Cable, OMNI FIT™ Premium,
Straight, O-Ring and 360° sealing rubber

ACCESSORIES

| | | |
|--------------------------|---------|------------------------------------|
| Wrench size front | mm (in) | 22 |
| Wrench size rear | mm (in) | 22 |
| Trimming Tool | | TRIM-SET-L12-D01, TRIM-LCF12-D01-A |

TESTING AND ENVIRONMENTAL

| | | |
|-------------------------|--|------|
| Waterproof Level | | IP68 |
|-------------------------|--|------|

[External Document Links](#)
[Installation Instruction](#)

[Notes](#)