

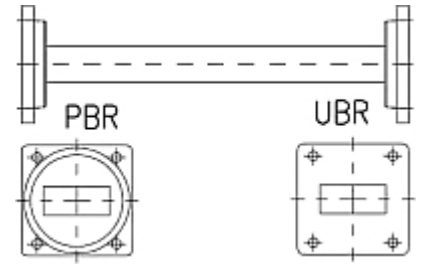


Rectangular Waveguide R 84 Straight Section,
flanges PBR/UBR 84, $f = 6.57\text{--}9.99\text{ GHz}$,
VSWR max 1.03, $A = 100\text{ mm}$ (3.9in),
gasket and screw kit enclosure
made of brass

FEATURES / BENEFITS

Waveguide installation

- The rectangular waveguide component provides simple installation in particular difficult cases
- It can be installed where less space is available
- It provides outstanding electrical performance

**Technical features****STRUCTURE**

Type of Rectangular Waveguide Component		Straight Section
Waveguide Size IEC (EIA)		R84 (WR112)
Flange A		PBR84
Flange B		UBR84
Flange Finish		Brass un-plated
Package Quantity		1

ELECTRICAL SPECIFICATIONS

Minimum Return Loss (max. VSWR)	dB (VSWR)	36.6 (1.03)
---------------------------------	-----------	-------------

MECHANICAL SPECIFICATIONS

Length	mm (in)	100 (3.9)
--------	---------	-----------

MATERIAL

Material		Brass
Color		Black

External Document Links

Notes