

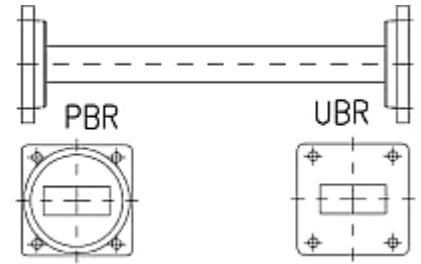


Rectangular Waveguide R 120 Straight Section,
flanges PBR/UBR 120, f= 9.84-12.50 GHz,
VSWR max 1.05, A=100mm (3.9in),
gasket and screw kit enclosure
made of brass

FEATURES / BENEFITS

Waveguide installation

- The rectangular waveguide component provides simple installation in particular difficult cases
- It can be installed where less space is available
- It provides outstanding electrical performance

**Technical features****STRUCTURE**

| | | |
|---|--|------------------|
| Type of Rectangular Waveguide Component | | Straight Section |
| Waveguide Size IEC (EIA) | | R120 (WR75) |
| Flange A | | PBR120 |
| Flange B | | UBR120 |
| Flange Finish | | Brass un-plated |
| Package Quantity | | 1 |

ELECTRICAL SPECIFICATIONS

| | | |
|---------------------------------|-----------|-------------|
| Minimum Return Loss (max. VSWR) | dB (VSWR) | 32.3 (1.05) |
|---------------------------------|-----------|-------------|

MECHANICAL SPECIFICATIONS

| | | |
|--------|---------|-----------|
| Length | mm (in) | 100 (3.9) |
|--------|---------|-----------|

MATERIAL

| | | |
|----------|--|-------|
| Material | | Brass |
| Color | | Black |

External Document Links

Notes