

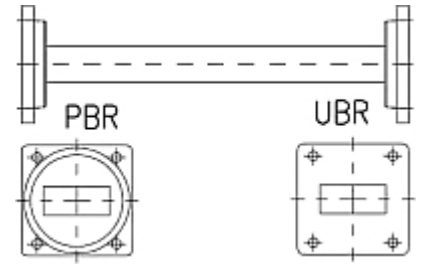


Rectangular Waveguide R 220 Straight Section,
flanges PBR/UBR 220, $f = 17.6\text{--}26.7\text{ GHz}$,
VSWR max 1.08, $A = 100\text{ mm}$ (3.9in),
gasket and screw kit enclosure
made of copper

FEATURES / BENEFITS

Waveguide installation

- The rectangular waveguide component provides simple installation in particular difficult cases
- It can be installed where less space is available
- It provides outstanding electrical performance

**Technical features****STRUCTURE**

| | | |
|---|--|------------------|
| Type of Rectangular Waveguide Component | | Straight Section |
| Waveguide Size IEC (EIA) | | R220 (WR42) |
| Flange A | | PBR220 |
| Flange B | | UBR220 |
| Flange Finish | | Brass un-plated |
| Package Quantity | | 1 |

ELECTRICAL SPECIFICATIONS

| | | |
|---------------------------------|-----------|-------------|
| Minimum Return Loss (max. VSWR) | dB (VSWR) | 28.3 (1.08) |
|---------------------------------|-----------|-------------|

MECHANICAL SPECIFICATIONS

| | | |
|--------|---------|-----------|
| Length | mm (in) | 100 (3.9) |
|--------|---------|-----------|

MATERIAL

| | | |
|----------|--|--------|
| Material | | Copper |
| Color | | Black |

External Document Links

Notes