



Coaxial Adapter, 1 5/8" EIA / N Female

FEATURES / BENEFITS



Technical features

STRUCTURE

Product Line		Coaxial Cable Components
Product Type		Coaxial Adapter

MECHANICAL SPECIFICATIONS

Connector A		1 5/8" EIA (50 Ω) according IEC 60339-2
Center Contact Connector A		copper-alloy, silver plated
Outer Contact Connector A		copper-alloy, silver plated
Connector B		N female (50 Ω) according IEC 61169-16
Center Contact Connector B		copper-alloy, silver plated
Outer Contact Connector B		copper-alloy, silver plated
Dielectric		PTFE
Sealing class		IP68, connected

ELECTRICAL SPECIFICATIONS

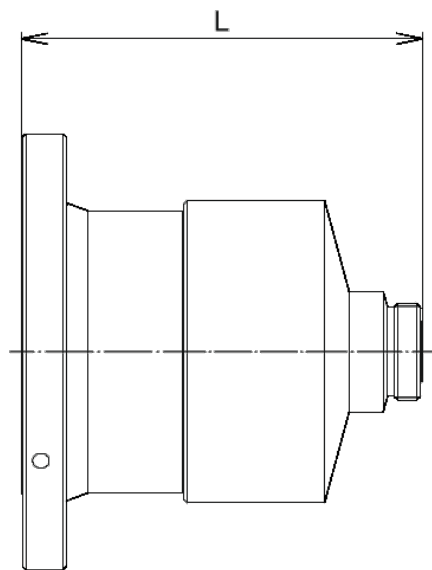
Frequency Range - MHz		DC - 2700
VSWR, Return Loss	VSWR (dB)	0-1000 MHz: 1.02 (40.09) 1000-2700 MHz: 1.04(33.15)
Residual Voltage		1500 V
Average Power		300 W

TEMPERATURE SPECIFICATIONS

Operation Temperature	°C (°F)	-45 to 85 (-49 to 185)
-----------------------	---------	------------------------

PACKAGING INFORMATION

Package Quantity		1
Weight	kg (lb)	0.9 (1.984)



Typical drawing

Length: L = 84.7 mm

External Document Links

Notes