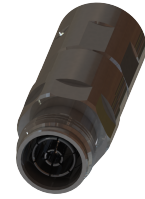




43F-LCF12-E01

4.3-10 Female Straight Connector for 1/2" Coaxial Cable, OMNI FIT™ Premium, O-Ring and compression sealing



OMNI FIT™ high performance connectors are designed for use with both CELLFLEX® (copper) and CELLFLEX® Lite (aluminium) cables. They are designed specifically to provide the highest quality connector-cable interface while simplifying and speeding up connector attachment. All RFS connectors are fully tested for mechanical and electrical compliance to industry specifications.

The 4.3-10 connector is an innovative, space-saving RF connection meeting all requirements even under the most severe environmental conditions and not relying on coupling nut torque. Sealing against outer conductor and jacket by means of the o-ring and 360° compression fit. Multifunctional, self-lubricating HighTech polymer assembly locks on cable corrugation, avoids electrochemical potential differences and compression-fits to the jacket.

FEATURES / BENEFITS

- Ultra high PIM performance i.e. reduced interference leading to high customer satisfaction
- Two-piece design i.e. visual inspection of interlocking leads to improved installation security
- OMNI FIT™ concept i.e. streamlined order management and reduced stock level
- Watertight sealing in mated and unmated condition, i.e. reduced efforts during installation and improved security during operation
- Tri metal alloy plating i.e. extreme resistance against corrosion even under hardest climatic and environmental circumstances
- Multi-thread (Tristart) design i.e. simplified and accelerated tightening process
- RoHS (EU) and CRoHS (China) compliant i.e. can be used on a global basis

Technical features

GENERAL SPECIFICATIONS

| | | |
|------------------------|--|---|
| Transmission Line Type | | Coaxial Cable |
| Cable Size | | 1/2 |
| Cable Type | | Foam Dielectric |
| Model Series | | LCF12-50 Series, ICA12-50 Series, RCF12-50 Series |
| Connector Interface | | 4.3-10 |
| Connector Type | | OMNI FIT™ PREMIUM Straight |
| Sealing Method | | Sealing Rubber + 360° Clamping |
| Gender | | Female |

ELECTRICAL SPECIFICATIONS

| | | |
|-----------------------------------|-----------|--|
| Nominal Impedance, ohms | Ohm | 50 |
| 3rd Order IM Product @ 2x20 Watts | dBc | -163 ; typical -167 |
| Maximum Frequency | GHz | 6.0 |
| VSWR, Return Loss | VSWR (dB) | 0 < f ≤ 1.0 GHz: 1.02 (40.1) 1.0 < f ≤ 2.2 GHz: 1.03 (37) 2.2 < f ≤ 2.7 GHz: 1.03 (36) 2.7 < f ≤ 3.8 GHz: 1.06 (31) 3.8 < f ≤ 5.0 GHz: 1.11 (26) 5.0 < f ≤ 6.0 GHz: 1.15 (23) |

MECHANICAL SPECIFICATIONS

| | | |
|--------------------------|---------|---------------|
| Plating Outer/Inner | | NiTin/Silver |
| Length | mm (in) | 62.7 (2.47) |
| Outer Diameter | mm (in) | 25 (0.98) |
| Inner Contact Attachment | | Basket |
| Outer Contact Attachment | | 360° clamping |



43F-LCF12-E01

4.3-10 Female Straight Connector for 1/2" Coaxial Cable, OMNI FIT™ Premium, O-Ring and compression sealing

ACCESSORIES

| | | |
|--------------------------|---------|------------------------------------|
| Wrench size front | mm (in) | 22 (7/8) |
| Wrench size rear | mm (in) | 22 (7/8) |
| Trimming Tool | | TRIM-SET-L12-D01, TRIM-LCF12-D01-A |

TESTING AND ENVIRONMENTAL

| | | |
|---------------------------------|---------|------------------------|
| Waterproof Level | | IP68 |
| STORAGE TEMPERATURE CF | °C (°F) | -10 to 40 (14 to 104) |
| OPERATION TEMPERATURE CF | °C (°F) | -40 to 85 (-40 to 185) |

[External Document Links](#)

[Installation Instruction](#)

[Notes](#)