

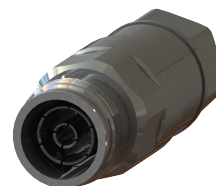


**43F-SCF12-E01**

**4.3-10 Female Straight Connector for 1/2" Coaxial Cable, OMNI FIT™ Premium, O-Ring and compression sealing**

OMNI FIT™ high performance connectors are designed for use with both CELLFLEX® (copper) and CELLFLEX® Lite (aluminium) cables. They are designed specifically to provide the highest quality connector-cable interface while simplifying and speeding up connector attachment. All RFS connectors are fully tested for mechanical and electrical compliance to industry specifications.

The 4.3-10 connector is an innovative, space-saving RF connection meeting all requirements even under the most severe environmental conditions and not relying on coupling nut torque. Sealing against outer conductor and jacket by means of the o-ring and 360° compression fit. Multifunctional, self-lubricating HighTech polymer assembly locks on cable corrugation, avoids electrochemical potential differences and compression-fits to the jacket.



**FEATURES / BENEFITS**

- Ultra high PIM performance i.e. reduced interference leading to high customer satisfaction
- Two-piece design i.e. visual inspection of interlocking leads to improved installation security
- OMNI FIT™ concept i.e. streamlined order management and reduced stock level
- Watertight sealing in mated and unmated condition, i.e. reduced efforts during installation and improved security during operation
- Tri metal alloy plating i.e. extreme resistance against corrosion even under hardest climatic and environmental circumstances
- Multi-thread (Tristart) design i.e. simplified and accelerated tightening process
- RoHS (EU) and CRoHS (China) compliant i.e. can be used on a global basis

**Technical features**

**GENERAL SPECIFICATIONS**

|                        |  |                               |
|------------------------|--|-------------------------------|
| Transmission Line Type |  | Coaxial Cable                 |
| Cable Size             |  | 1/2                           |
| Cable Type             |  | Foam Dielectric Superflexible |
| Model Series           |  | SCF12-50 Series               |
| Connector Interface    |  | 4.3-10                        |
| Connector Type         |  | OMNI FIT™ PREMIUM Straight    |
| Sealing Method         |  | sealing rubber                |
| Gender                 |  | Male                          |

**ELECTRICAL SPECIFICATIONS**

|                                   |           |  |
|-----------------------------------|-----------|--|
| Nominal Impedance, ohms           | Ohm       | 50   |
| 3rd Order IM Product @ 2x20 Watts | dBc       | -163 ; typical -167  |
| Maximum Frequency                 | GHz       | 6.0  |
| VSWR, Return Loss                 | VSWR (dB) | 0 <math>\leq f \leq 1.0 \text{ GHz}</math>: 1.02 (40)<br>1.0 <math>\leq f \leq 2.2 \text{ GHz}</math>: 1.03 (37)<br>2.2 <math>\leq f \leq 2.7 \text{ GHz}</math>: 1.03 (36)<br>2.7 <math>\leq f \leq 3.8 \text{ GHz}</math>: 1.05 (30)<br>3.8 <math>\leq f \leq 5.0 \text{ GHz}</math>: 1.11 (26)<br>5.0 <math>\leq f \leq 6.0 \text{ GHz}</math>: 1.15 (23) |

**MECHANICAL SPECIFICATIONS**

|                          |         |                          |
|--------------------------|---------|--------------------------|
| Plating Outer/Inner      |         | Tri metal alloy / Silver |
| Length                   | mm (in) | 54.1 (2.13)              |
| Outer Diameter           | mm (in) | 23.5 (0.9)               |
| Inner Contact Attachment |         | spring finger            |
| Outer Contact Attachment |         | clamping                 |



**43F-SCF12-E01**

4.3-10 Female Straight Connector for 1/2" Coaxial Cable, OMNI FIT™ Premium, O-Ring and compression sealing

**ACCESSORIES**

|                          |         |                                    |
|--------------------------|---------|------------------------------------|
| <b>Wrench size front</b> | mm (in) | 22 (7/8)                           |
| <b>Wrench size rear</b>  | mm (in) | 20 (7/8)                           |
| <b>Trimming Tool</b>     |         | TRIM-SET-S12-D01, TRIM-SCF12-D01-A |

**TESTING AND ENVIRONMENTAL**

|                         |  |      |
|-------------------------|--|------|
| <b>Waterproof Level</b> |  | IP68 |
|-------------------------|--|------|

[External Document Links](#)  
[Installation Instruction](#)

[Notes](#)