



APXVARR24_43-C-NA20

Dual Slant Polarized Triple Band (6 Port) Antenna, 584-746/1695-2200/1695-2200MHz, 65deg, 15.7/18.5/18.5dBi, 2.4m (8ft), VET, RET, 0-10°/0-10°/0-10° Tilt Range

FEATURES / BENEFITS

This antenna provides a 6 Port multi-band flexible platform for advanced use for flexible use in deployment scenarios for encompassing 600MHz, 700MHz, AWS & PCS applications.

- Field Replaceable (Integrated) AISG RET platform for reduced environmental exposure and long lasting quality.
- Superior elevation pattern performance across the entire electrical down tilt range.
- Includes three AISG RET motors - Includes 0.5m AISG jumper for optional daisy chain of two high band RET motors for one single AISG point of high band tilt control.



Technical features

ELECTRICAL SPECIFICATIONS

Electrical Specification Header		Antenna Performance - R1		
Frequency Range	MHz	584-617	617-698	698-746
Gain	dBi	15.3	15.6	16.0
Horizontal Beamwidth	deg	63	61	59
Vertical Beamwidth	deg	11.4	10.4	9.4
Electrical Down Tilt Range	deg	0-10	0-10	0-10
Upper Side Lobe Suppression Peak to +20	deg	21	21	23
Upper Side Lobe Suppression 0 to +20	deg	20	20	20
Front to Back Ratio +/-30 Copolar	dB	27	30	30
Cross Polar Isolation between ports	dB	26	26	26
Cross Polar Discrimination (XPD) @ Boresight	dB	22	25	26
Cross Polar Discrimination (XPD) at +/- 60	dB	12	9	6
VSWR	1.5:1	1.5:1	1.5:1	
3rd Order IMP 2 x 43dBm	dBc	153		
Maximum Power Input	Watts	250	250	250



APXVARR24_43-C-NA20

Dual Slant Polarized Triple Band (6 Port) Antenna, 584-746/1695-2200/1695-2200MHz, 65deg, 15.7/18.5/18.5dBi, 2.4m (8ft), VET, RET, 0-10°/0-10°/0-10° Tilt Range

ELECTRICAL SPECIFICATIONS

Electrical Specification Header		Antenna Performance - LEFT B1		
Frequency Range	MHz	1695-1880	1850-1990	1920-2200
Gain	dBi	17.1	17.7	18.4
Horizontal Beamwidth	deg	67	68	67
Vertical Beamwidth	deg	6.2	5.8	5.2
Electrical Down Tilt Range	deg	0-10	0-10	0-10
Upper Side Lobe Suppression Peak to +20	dB	21	18	17
Upper Side Lobe Suppression 0 to +20	dB	20	18	16
Front to Back Ratio +/-30 Copolar	dB	29	30	30
Cross Polar Isolation between ports	dB	26	26	26
Cross Polarization (XPD) @ Boresight	dB	21	20	18
Cross Polarization (XPD) @ +/-60	dB	7	10	7
VSWR	1.5:1	1.5:1		1.5:1
3rd Order IMP 2 x 43dBm	dB	153	153	153
Maximum Power Input	Watts	250	250	250

ELECTRICAL SPECIFICATIONS

Electrical Specification Header		Antenna Performance - Right B2		
Frequency Range	MHz	1695-1880	1850-1990	1920-2200
Gain	dBi	16.9	17.9	18.5
Horizontal Beamwidth	deg	68	68	68
Vertical Beamwidth	deg	6.2	5.7	5.2
Electrical Down Tilt Range	deg	0-10	0-10	0-10
Upper Side Lobe Suppression Peak to +20	dB	20	21	16
Upper Side Lobe Suppression 0 to +20	dB	17	19	16
Front to Back Ratio +/-30 Copolar	dB	28	29	29
Cross Polar Isolation between Ports	dB	26	26	26
Cross Polarization (XPD) @ Boresight	dB	21	18	17
Cross Polarization (XPD) @ +/-60	dB	7	9	7
VSWR	1.5:1	1.5:1	1.5:1	
3rd Order IMP 2 x 43dBm	dB	153	153	153
Maximum Power Input	Watts	250	250	250

ELECTRICAL SPECIFICATIONS

Impedance	Ohm	50		
Polarization	Deg	+/-45°		



APXVARR24_43-C-NA20

Dual Slant Polarized Triple Band (6 Port) Antenna, 584-746/1695-2200/1695-2200MHz, 65deg, 15.7/18.5/18.5dBi, 2.4m (8ft), VET, RET, 0-10°/0-10°/0-10° Tilt Range

MECHANICAL SPECIFICATIONS

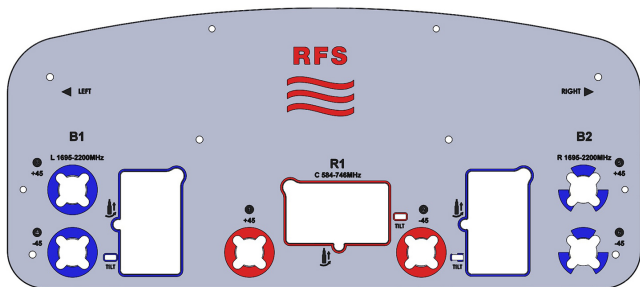
Dimensions - H x W x D	mm (in)	2438 x 500 x 216 (96 x 19.7 x 8.5)
Weight (Antenna Only)	kg (lb)	40.5 (89.3)
Weight (Mounting Hardware only)	kg (lb)	11.5 (25.3)
Packing size- HxWxD	mm (in)	2590 x 560 x 411 (102 x 22 x 16.2)
Shipping Weight	kg (lb)	60.5 (133.4)
Connector type		6 x 4.3-10 Long Neck Female/Bottom + 6 AISG RET connectors (3 male, 3 female)
Adjustment mechanism		Integrated RET solution AISG compliant (Field Replaceable)
Mounting Hardware Material		Diecast Aluminium and Galvanized steel
Radome Material / Color		Fiberglass / Light Grey RAL7035

TESTING AND ENVIRONMENTAL

Temperature Range	°C (°F)	-40 to 60 (-40 to 140)
Lightning protection		Direct Ground
Survival/Rated Wind Velocity	km/h	241 (150)
Wind Load @Rated Wind Front	N	1223
Wind Load @Rated Wind Side	N	446
Wind Load @Rated Wind Rear	N	1360

ORDERING INFORMATION

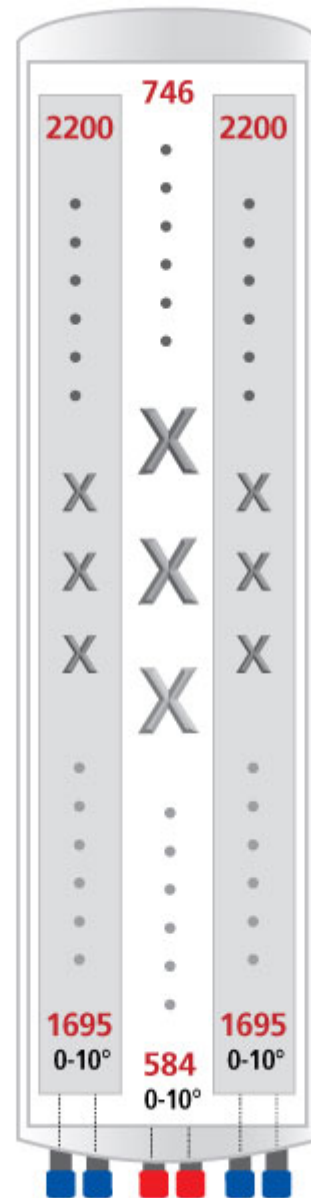
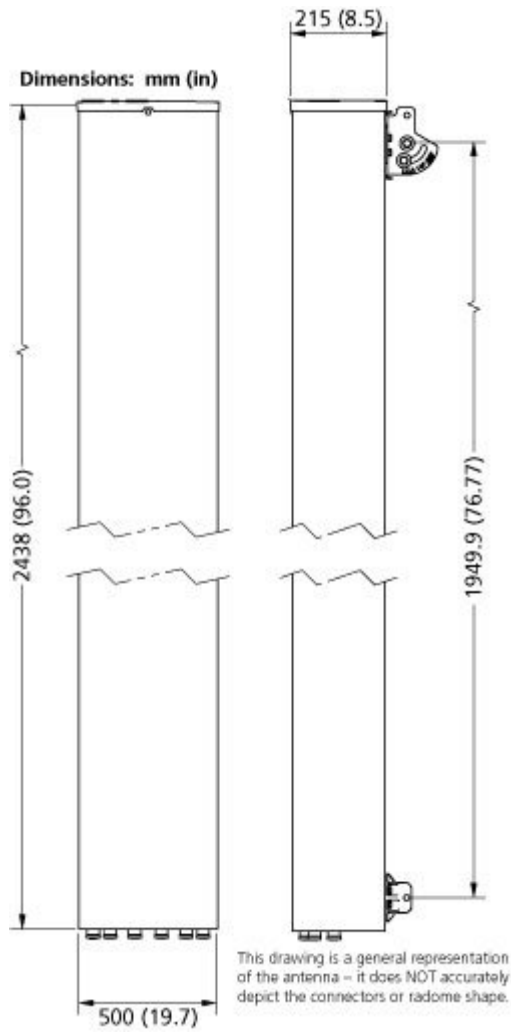
Order No.	Configuration	Mounting Hardware	Mounting pipe Diameter	Weight
APXVARR24_43-C-NA20	Field Replaceable RET (3)	APM40-5E Dual Beam tilt kit	60-120mm	60.5 kg (133.4 lbs)





APXVARR24_43-C-NA20

Dual Slant Polarized Triple Band (6 Port) Antenna, 584-746/1695-2200/1695-2200MHz, 65deg, 15.7/18.5/18.5dBi, 2.4m (8ft), VET, RET, 0-10°/0-10°/0-10° Tilt Range



[External Document Links](#)
[APM40_Series_Installation_Instructions](#)

Notes
For additional mounting information please click ""External Document Links"".

• **Radiating patterns:** [Request pattern files](#)