



FEATURES / BENEFITS

- 2 ports / 1 system in low band
- Integrated RET platform
- SRET -Field replaceable / ACU HW Version -2.02 / SW Version -2.72
- Compliant with AISG V2.0 and 3GPP



Technical features

ELECTRICAL SPECIFICATIONS

Electrical Specification Header		LOW BAND ARRAY (698-960) [R1]		
Frequency Band	MHz	698 - 790	790 - 890	890 - 960
Gain Typical	dBi	14.7	15.2	15.1
Gain Over all Tilts	dBi	14.1+/-0.6	14.7+/-0.5	15.0+/-0.1
Azimuth Beamwidth 3dB	Deg	69.3+/-2	66+/-2.5	63.5+/-1.9
Elevation Beamwidth 3dB	Deg	17.2+/-1.4	14.8+/-1	13.5+/-0.6
Cross Polar Discrimination at Boresight	dB	25.1	22.8	27.4
Cross Polar Discrimination over Sector	dB	13.1	6.8	11.4
F/B at +/-30deg Total Power	dB	23.1	25.0	23.4
First Upper Side Lobe Suppression	dB	20.6	18.4	15.0
Electrical Downtilt	Deg	2 to 15		
Cross Polar Isolation	dB	28		
VSWR	-	1.5		
Passive Intermodulation (3rd Order, 2 x 43dBm)	dBc	-153		
Maximum Effective Power per Port	Watt	350		

ELECTRICAL SPECIFICATIONS

Impedance	Ohm	50
Polarization	Deg	±45°



MECHANICAL SPECIFICATIONS

Dimensions - H x W x D	mm (in)	1495 x 320 x 140 (58.9 x 12.6 x 5.5)
Weight (Antenna Only)	kg (lb)	15.5 (34.2)
Weight (Mounting Hardware only)	kg (lb)	4.5 (9.9)
Packing size- HxWxD	mm (in)	1775 x 395 x 215 (69.9 x 15.6 x 8.5)
Shipping Weight	kg (lb)	24 (52.9)
Connector type		2 x 4.3-10 female/bottom + 2 AISG connectors (1 male, 1 female)
Radome Material / Color		Fiberglass / Light Grey RAL7035

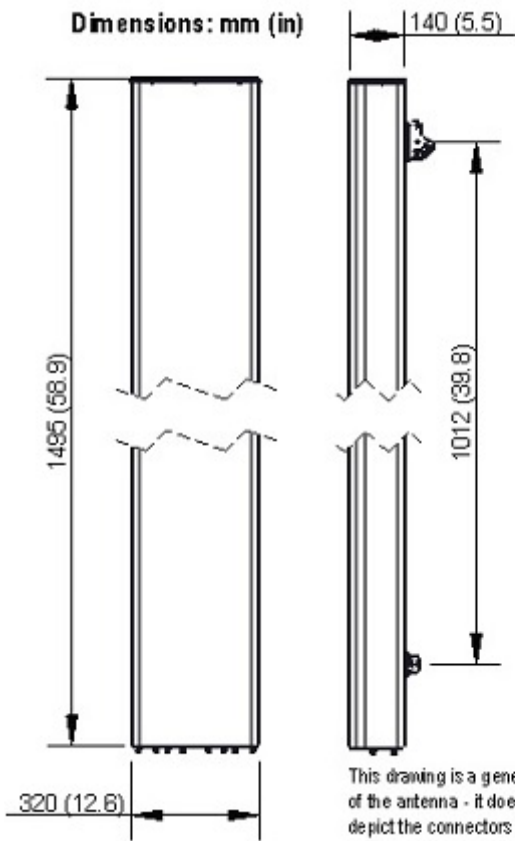
TESTING AND ENVIRONMENTAL

Temperature Range	°C (°F)	-40 to 60 (-40 to 140)
Lightning protection		Direct Ground
Survival/Rated Wind Velocity	km/h	200 (150)
Wind Load @Rated Wind Front	N	516
Wind Load @Rated Wind Side	N	193
Wind Load @Rated Wind Rear	N	614

ORDERING INFORMATION

Order No.	Configuration	Mounting Hardware	Mounting pipe Diameter	Shipping Weight
APXVB15B_43-C-I20	Internal RET (ACU-I20-B1)	APM50-B1	50-110mm	24.0 kg





This drawing is a general representation of the antenna - it does NOT accurately depict the connectors or radome shape.



External Document Links
[APM50_Series_Installation_Instructions](#)

Notes

- All electrical parameters are compliant with BASTA NGMN 11.1 requirements.
- For additional mounting information please click ""External Document Links"".

• Radiating patterns: [Request pattern files](#)