

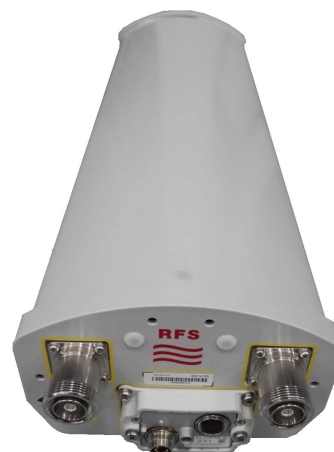


FEATURES / BENEFITS

This antenna is an ideal choice for 2x2 MIMO applications in visually sensitive areas. It can be used for multiple bands such as DCS, PCS, UMTS and LTE 2.6.

FEATURES / BENEFITS

- Single band cross-polarized with 2 ports, 1695-2690
- Ultra-broadband design from DCS to LTE 2600
- Variable electrical downtilt - provides enhanced precision in controlling intercell interference
- The tilt is infield adjustable 5-18 deg
- Field Replaceable RET
- Quick and easy to install - reduces installation time and costs



Technical features

ELECTRICAL SPECIFICATIONS

Electrical Specification Header		HIGH BAND ARRAY (1695-2690 MHZ) [Y]				
Frequency Band	Mhz	1695 - 1880	1850 - 2010	1900 - 2170	2300 - 2400	2500-2690
Polarization	-	Slant +/-45				
Impedance	Ohms	50				
Passive Intermodulation	dBc	-153				
Maximum Effective Power per Port	Watts	200				
Gain Typical	dBi	14.0	14.4	14.4	14.9	15.5
Gain Over All Tilts	dBi	13.6 +/-04	14.0 +/-0.4	14.1 +/-0.3	14.5 +/-0.4	14.9 +/- 0.6
VSWR	-	1.5:1				
Return Loss	dB	14				
Isolation between ports	dB	26				
Azimuth Beamwidth 3dB	Deg	69 +/-2	68 +/-3	66 +/-3	62 +/-2	61 +/-3
X-pol +/- 60 deg	dB	15	13	12	12	7
Front-to-Back, at +/- 30 Total Power	dB	> 21	> 22	> 21	> 22	> 23
Elevation Beamwidth 3 dB	Deg	17.7 +/-1	16.8 +/-1	15.9 +/-1	14 +/-1	12.4 +/-1.5
Electrical Downtilt	Deg	5 to 18				
First Upper Side Lobe Suppression	dB	> 17	> 23	> 19	> 20	> 20

ELECTRICAL SPECIFICATIONS

Polarization	Deg	±45°
--------------	-----	---------



MECHANICAL SPECIFICATIONS

Dimensions - H x W x D	mm (in)	609 x 175 x 110 (24 x 6.9 x 4.3)
Weight (Antenna Only)	kg (lb)	3.3 (7.3)
Weight (Mounting Hardware only)	kg (lb)	4.7 (10)
Packing size- HxWxD	mm (in)	760 x 275 x 275 (29.9 x 10.8 x 10.8)
Shipping Weight	kg (lb)	9 (19.8)
Connector type		2 x 7-16 Long Neck female/bottom + 2 AISG connectors (1 male, 1 female)
Radome Material / Color		ASA / Light Grey RAL7035

TESTING AND ENVIRONMENTAL

Temperature Range	°C (°F)	-40 to 60 (-40 to 140)
Lightning protection		Direct Grounded
Survival/Rated Wind Velocity	km/h	240 (150)
Wind Load @Rated Wind Front	N	119
Wind Load @Rated Wind Side	N	46
Wind Load @Rated Wind Rear	N	81
Environmental		ETSI 300-019-2-4 Class 4.1E

ORDERING INFORMATION

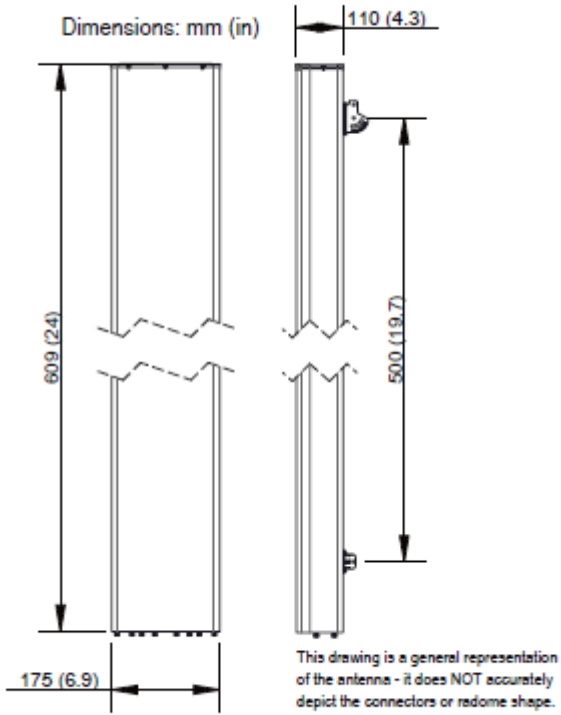
Model Number	Configuration	Mounting Hardware	Mounting pipe Diameter	Antenna Weight
APXVL06-C-A20	External RET Includes	APM40-6 kits	50-120mm	8 kg





APXVL06-C-A20

RF X-TREME™ Single Band Antenna, 1695-2690MHz, 65deg, 15.5 dBi, 0.6m, VET, 5-18deg



[External Document Links](#)
[APM40_Series_Installation_Instructions](#)

Notes
All electrical parameters are compliant with BASTA NGMN 10.0 requirements.
For additional mounting information please click ""External Document Links"".

• **Radiating patterns:** [Request pattern files](#)