



Standard connector for FLEXWELL® elliptical waveguide E300 with PBR320 flange, gasket with shrinking sleeve sealed
frequency range: 27.5 - 33.4 GHz

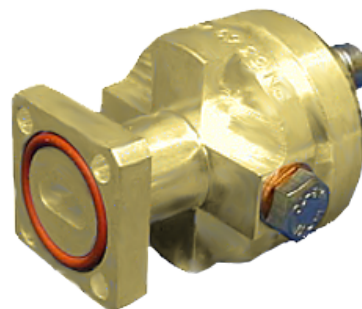
FEATURES / BENEFITS

Superior Design

- Due to the precise manufacturing no tuning screws are necessary
- The terminations are brass passivated for good electrical performance
- A gas inlet is included

Quick & Easy Installation

- Different flaring tools are available
- No tuning in the field



Technical features

STRUCTURE

| | | |
|----------------------------------|-----|------------------------------|
| Transmission Line Type | | Elliptical Waveguide |
| Cable Type | | E300 |
| Model Series | | E300 Series |
| Connector Frequency Range | GHz | 27.5 - 33.4 |
| Connector Type | | Fixed |
| Sealing Method | | Gasket with Shrinking Sleeve |
| Plating Outer/Inner | | Brass |
| Waterproof Level | | IP68 |
| Gas Inlet | | M5 x 0.8 |
| Connector Interface | | PBR320 |

MECHANICAL SPECIFICATIONS

| | | |
|-----------------------|---------|------------|
| Length | mm (in) | 44 (1.7) |
| Outer Diameter | mm (in) | 32 (1.3) |
| Weight | kg (lb) | 0.2 (0.44) |

External Document Links

- [Installation Instruction](#)
- [Application Note](#)

Notes