



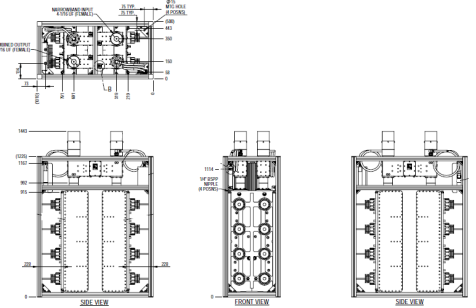
The CA8PPXX201E combiner is designed for DTV mask and combining applications. A module comprises a pair of 8 pole 200mm UHF filters and a pair of 3 dB couplers in a balanced combiner configuration.

Each combiner module features

- Compact size
- Low insertion loss
- Adjacent channel operation
- DTV mask filtering
- Double compensated invar temperature stability
- Water cooled

Detailed electrical specifications and further information is available by opening the appropriate external document link below.

[FEATURES / BENEFITS](#)



Typical CA8PPXX201E Combiner

Technical features

STRUCTURE

Product Line		Combiner TV
Product Type		Band IV/V (UHF) TV Balanced Combiner
Filter Type and Size		Cross coupled

ELECTRICAL SPECIFICATIONS

Frequency Range	MHz	470 - 862
Minimum Channel Spacing		adjacent
Narrowband Input Power	kW	20
Number of Poles		8
Number of Cross Couplings		2
Mask		Critical



CA8PPXX201E combiner with 5 port patch panel



External Document Links

[Application Guide \(ETSI 6MHz\)](#)

[Application Guide \(ETSI-DVB-T and T2 8MHz\)](#)

[Application Guide \(ISDB-T 6MHz\)](#)

Notes