



CDS-Hybrid-43 6GHz Directional Coupler Series

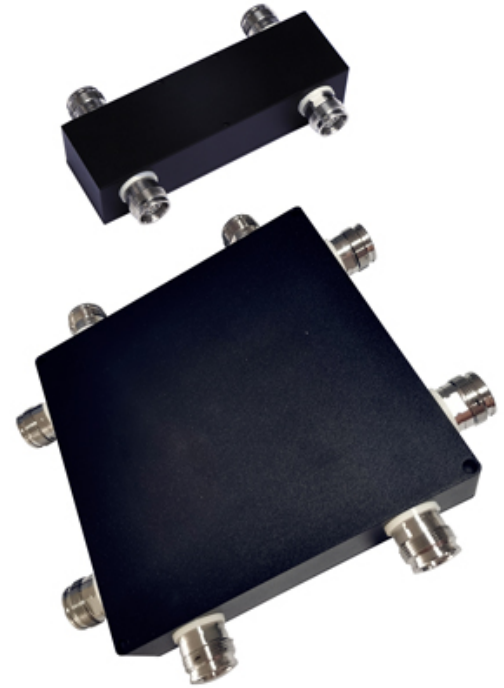
Broadband Hybrid Combiner for Wireless & Indoor Application, Support 555-6000MHz, 2X2 and 4X4

PRODUCT DESCRIPTION

RFS CDS*-Hybrid-43 series Hybrid Combiner have been designed for a variety of wireless applications in the frequency band from 555 to 6000MHz. This series contains 2 product types: 2 by 2 and 4 by 4. The 2 by 2 Hybrid Combiner is four-port directional coupler which equally combines two wireless signals and transfers the combined signal to two output ports whilst the 4 by 4 Hybrid Combiner which equally combines four wireless signals and transfers the combined signal to four output ports. The broad frequency range is ideally suited for multi-band distributed antenna systems or in combination with RADIAFLEX® radiating cables.

FEATURES / BENEFITS

- Broadband 555MHz-6000MHz
- 4.3-10-female interfaces
- PIM optimized design (163dBc @ 2x43dBm)
- Ideal for all kind of DAS applications
- Low insertion loss
- High power handling
- Small size, low weight



TECHNICAL FEATURES

ELECTRICAL SPECIFICATIONS

| | | |
|-------------------|-----|----------|
| Frequency Range | MHz | 555-6000 |
| Power Rating | W | 200 |
| PIM 3rd @2*43 dBm | dBc | 163 |
| Input Impedance | Ohm | 50 |

MECHANICAL SPECIFICATIONS

| | | |
|-------------------|----|---------------|
| Connectors | | 4.3-10 Female |
| Temperature Range | °C | -25 to +65 |
| IP Level | | IP66 |
| RoHS | | Compliant |



CDS-Hybrid-43 6GHz Directional Coupler Series

Broadband Hybrid Combiner for Wireless & Indoor Application, Support 555-6000MHz, 2X2 and 4X4

MODEL NUMBER SPECIFICATIONS

| Model Number | | CDS2x2-43-555/6000 | CDS4x4-43-555/6000 |
|--------------------|---------|--|---|
| VSWR | | 1.25 | 1.3 |
| PIM 3rd @2*43 dBm | dBc | 163 | 163@700&1.8GHz, 160@3.5GHz |
| Coupling Tolerance | dB | 3.1dB ±1.1dB@0.555-0.65GHz 3.1dB ±0.8dB@0.65-6GHz | 6.2dB ±1.5dB@0.617-5.95GHz 6.2dB ±2dB@0.555-0.617GHz 6.2dB ±2dB@5.95-6GHz |
| Isolation | dB | 20dB@0.555-2.7GHz 21dB@2.7-6GHz | 19dB@0.555-6GHz |
| Dimensions, L*W*H | mm (in) | 145*79*36 (5.71*3.11*1.42) | 239*239*35 (9.4*9.4*1.38) |
| Net Weight, ±10% | kg (lb) | 0.56(1.23) | 1.36(3) |

External Document Links

[LINK to VEX FILES](#)

Notes