

PRODUCT DESCRIPTION

RFS CDS*-43 Directional Coupler Series have been designed for a variety of wireless applications in the frequency band from 350 to 2700 MHz. The wide frequency range allows to use these couplers for multiband wireless Distributed Antenna Systems (DAS) or in combination with RADIAFLEX® radiating cable products. The units couple off a defined fraction of the signal from 6 to 30 dB fulfilling highest RF performance requirements by minimizing reflections or RF loss combined with a compact design. As all passive RFproducts, the CDS**-43 series ensures highest reliability and maintenance free operation.



3D Model of the Product

FEATURES / BENEFITS

- Broadband 350-2700MHz
- 4.3-10-female interfaces
- PIM optimized design
- Ideal for all kind of DAS applications
- Low insertion loss
- High power handling
- Small size, low weight

TECHNICAL FEATURES

ELECTRICAL SPECIFICATIONS

Frequency Range	MHz	350-2700
Input Power	W	200
PIM 3rd @2*43 dBm	dBc	160
Input Impedance	Ohm	50
Max. VSWR / Return Loss	VSWR / dB	1.22 / 20.0

MECHANICAL SPECIFICATIONS

Connectors		4.3-10 Female
Number of Input Ports		1
Number of Output Ports		2
Temperature Range	°C	-25 to +65
IP Level		IP65
RoHS		Compliant
Dimensions Height*Width*Length	mm	23*66*211
Weight	Kg	0.5

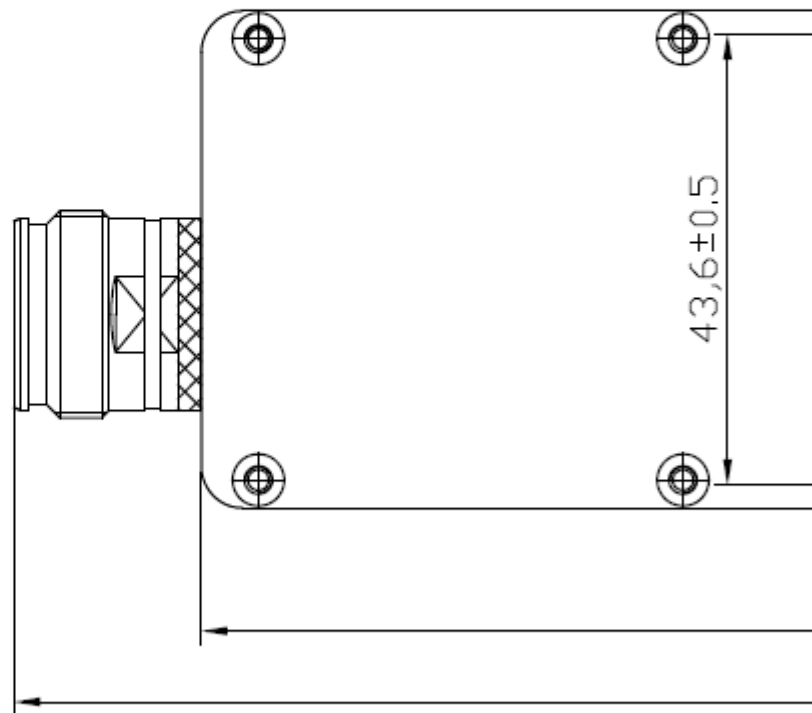
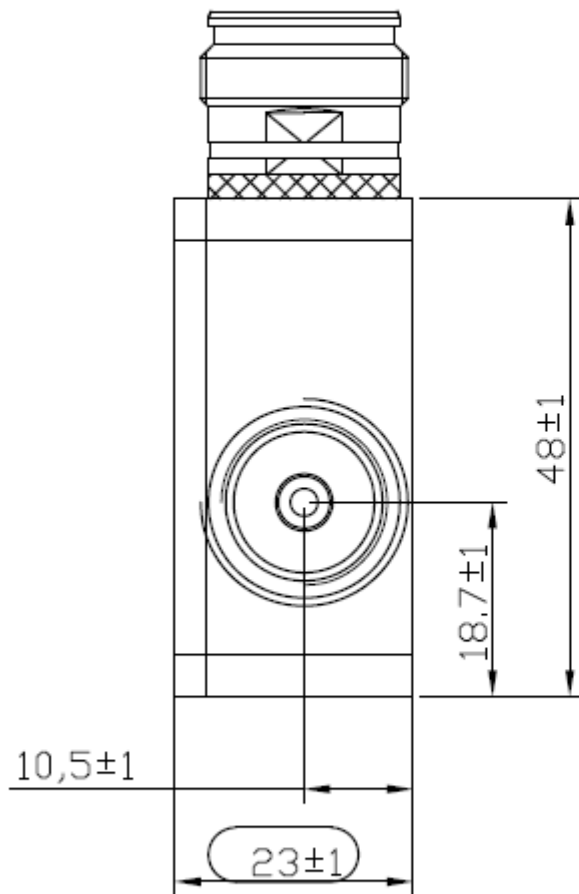
MODEL NUMBER SPECIFICATIONS

Model Number		CDS6-43-350/2700-01	CDS10-43-350/2700-01	CDS15-43-350/2700-01
Coupling Value	dB	6	10	15
Insertion Loss	dB	1,8	0,8	0,5
Isolation	dB	25,5	29,5	34,5
Coupling Flatness max.	dB	±1.15@380-2700MHz ±1.5@350-380MHz	±1.7@350-380MHz ±1.25@380-2700MHz	±1.7@350-380MHz ±1.25@380-2700MHz

MODEL NUMBER SPECIFICATIONS

Model Number		CDS20-43-350/2700-01	CDS30-43-350/2700-01
Coupling Value	dB	20	30
Insertion Loss	dB	0,25	0,3
Isolation	dB	39,5	49,5
Coupling Flatness max.	dB	±1.8@350-380MHz ±1.25@380-2700MHz	±1.8@ 350-380MHz ±1.5@ 380-2700MHz

Notes



External Document Links