



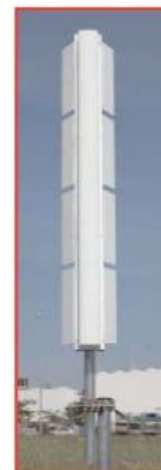
A new slim and light weight circularly polarised UHF antenna has been developed to provide excellent performance in a compact configuration. Low weight and low wind load construction make this antenna an ideal choice for applications, such as repeater stations for Mobile Media, where an economical and very flexible antenna solution is required.

**FEATURES / BENEFITS**

- Circularly polarised
- Ideally suited for low power infills or Mobile TV applications
- Low drag profile underpins the antenna's high wind speed rating and low wind load characteristics
- Cost-effective
- High input power
- For detailed technical information use the external document link below.



CPR4SK



CPR4A

**Technical features**

**STRUCTURE**

Product Line		Antenna TV
Product Type		Band IV/V (UHF) TV Slot Antennas

**ELECTRICAL SPECIFICATIONS**

Frequency Range	MHz	716 - 728
Polarization		Circular
Gain per Plane of Polarization	dBd	7.1
Return Loss	dB	> 26.4
Power Rating	kW	1.7 @ 722 MHz
Impedance (unbalanced)	$\Omega$	50

**MECHANICAL SPECIFICATIONS**

Input Connector		7-16 DIN Female at centre
Mounting (Standard)	mm (in)	Pole OD 60/24
Design Wind Speed (max)	km/h (mph)	180 (112)
Weight	kg (lb)	25
		55

**PACKAGING INFORMATION**

Shipping Weight, Kg (lb)	kg (lb)	25 ( )
--------------------------	---------	--------

**MATERIAL**

Material		Radiating element aluminium
Material - Radome		UV Resistant Fibre Glass
Material - Insulators		Radiating element aluminium
Material - Support Pole / Mounting		Radiating element aluminium
Material - Radiators		Radiating element aluminium
Material - Reflecting Screen		Radiating element aluminium

External Document Links  
[CPR Antenna series-03.pdf](#)

Notes