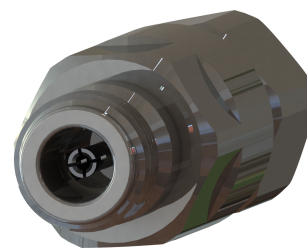




OMNI FIT™ high performance connectors are designed for use with both CELLFLEX® (copper) and CELLFLEX® Lite (aluminium) cables. They are designed specifically to provide the highest quality connector-cable interface while simplifying and speeding up connector attachment. All RFS connectors are fully tested for mechanical and electrical compliance to industry specifications. The N connector meets all technical requirements and covers high frequencies as well as legacy applications. Sealing against outer conductor and jacket by means of o-ring and 360° compression fit.



FEATURES / BENEFITS

- Ultra high PIM performance i.e. reduced interference leading to high customer satisfaction
- Two-piece design i.e. visual inspection of interlocking leads to improved installation security
- OMNI FIT™ concept i.e. streamlined order management and reduced stock level
- Watertight sealing in mated and unmated condition, i.e. reduced efforts during installation and improved security during operation
- Tri metal alloy plating i.e. extreme resistance against corrosion even under hardest climatic and environmental circumstances
- Multi-thread (Tristart) design i.e. simplified and accelerated tightening process
- RoHS (EU) and CRoHS (China) compliant i.e. can be used on a global basis

Technical features

GENERAL SPECIFICATIONS

Transmission Line Type		Coaxial Cable
Cable Size		3/8
Cable Type		Foam Dielectric
Connector Interface		N
Connector Type		OMNI FIT™ PREMIUM Straight
Sealing Method		O-ring + 360° Compression
Gender		Female

ELECTRICAL SPECIFICATIONS

Nominal Impedance, ohms	Ohm	50
3rd Order IM Product @ 2x20 Watts	dBc	-163 ; typical -167
Maximum Frequency	GHz	6
VSWR, Return Loss	VSWR (dB)	0 $f \le 1.0 \text{ GHz}$: 1.02 (40) 1.0 $f \le 2.2 \text{ GHz}$: 1.03 (37) 2.2 $f \le 2.7 \text{ GHz}$: 1.03 (37) 2.7 $f \le 3.8 \text{ GHz}$: 1.08 (28) 3.8 $f \le 5.0 \text{ GHz}$: 1.15 (23) 5.0 $f \le 6.0 \text{ GHz}$: 1.22 (20)

MECHANICAL SPECIFICATIONS

Plating Outer/Inner		Tri metal alloy/Silver
Length	mm (in)	65 (2.559)
Outer Diameter	mm (in)	24 (0.945)
Inner Contact Attachment		Basket
Outer Contact Attachment		Spring Finger

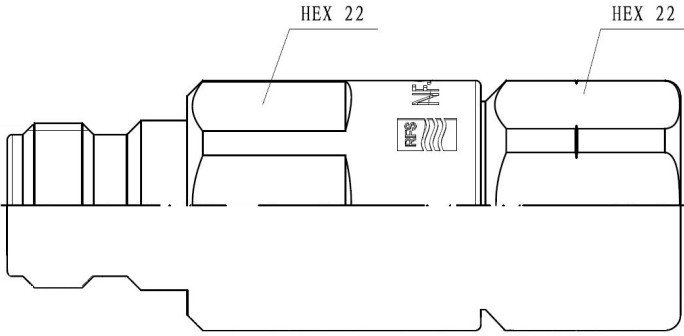
ACCESSORIES

Wrench size front	mm (in)	22
Wrench size rear	mm (in)	22



TESTING AND ENVIRONMENTAL

Waterproof Level		IP68
-------------------------	--	------



External Document Links

[Installation Instruction](#)

Notes