

**NF-SCF12-E01**

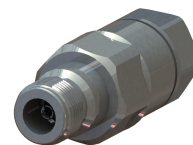
N Female Connector for 1/2" Coaxial Cable, OMNI FIT™ Premium,
Straight, threaded gasket and 360° compression sealing

OMNI FIT™ high performance connectors are designed for use with both CELLFLEX® (copper) and CELLFLEX® Lite (aluminium) cables. They are designed specifically to provide the highest quality connector-cable interface while simplifying and speeding up connector attachment. All RFS connectors are fully tested for mechanical and electrical compliance to industry specifications.

The N connector meets all technical requirements and covers high frequencies as well as legacy applications. Sealing against outer conductor and jacket by means of threaded gasket and 360° compression fit. Multifunctional, self-lubricating HighTech polymer assembly locks on cable corrugation, avoids electrochemical potential differences and compression-fits to the jacket.;

FEATURES / BENEFITS

- Ultra high PIM performance i.e. reduced interference leading to high customer satisfaction
- Two-piece design i.e. visual inspection of interlocking leads to improved installation security
- OMNI FIT™ concept i.e. streamlined order management and reduced stock level
- Watertight sealing in mated and unmated condition, i.e. reduced efforts during installation and improved security during operation
- Unique NiTin plating i.e. extreme resistance against corrosion even under hardest climatic and environmental circumstances
- Multi-thread (Tristart) design i.e. simplified and accelerated tightening process
- RoHS (EU) and CRoHS (China) compliant i.e. can be used on a global basis



OMNI FIT™ Premium Connectors

Technical features**GENERAL SPECIFICATIONS**

Transmission Line Type		Coaxial Cable
Cable Size		1/2
Cable Type		Foam Dielectric Superflexible
Model Series		SCF12-50 Series
Connector Interface		N
Connector Type		OMNI FIT™ PREMIUM Straight
Sealing Method		Threaded Gasket + 360° Compression
Gender		Female

ELECTRICAL SPECIFICATIONS

Nominal Impedance, ohms	Ohm	50
3rd Order IM Product @ 2x20 Watts	dBc	-156 ; typical -162
Maximum Frequency	GHz	6
VSWR, Return Loss	VSWR (dB)	0 GHz ≤ 1.0 GHz: 1.02 (40) 1.0 GHz ≤ 2.2 GHz: 1.03 (37) 2.2 GHz ≤ 2.7 GHz: 1.03 (36) 2.7 GHz ≤ 3.8 GHz: 1.06 (30) 3.8 GHz ≤ 5.0 GHz: 1.11 (26) 5.0 GHz ≤ 6.0 GHz: 1.15 (23)

MECHANICAL SPECIFICATIONS

Plating Outer/Inner		NiTIn/Silver
Length	mm (in)	62 (2.441)
Outer Diameter	mm (in)	24 (0.945)
Inner Contact Attachment		Spring Finger
Outer Contact Attachment		360° clamping



NF-SCF12-E01

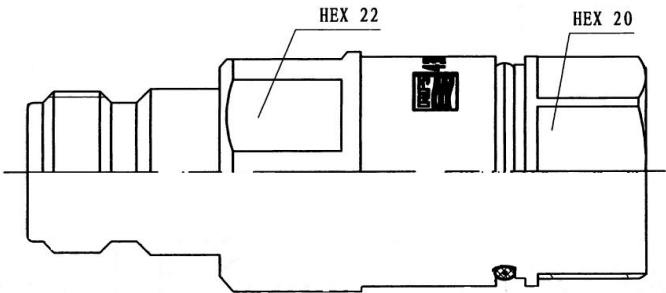
N Female Connector for 1/2" Coaxial Cable, OMNI FIT™ Premium,
Straight, threaded gasket and 360° compression sealing

ACCESSORIES

Wrench size front	mm (in)	22
Wrench size rear	mm (in)	20
Trimming Tool		TRIM-12-S06 TRIM-SCF12-D01-A

TESTING AND ENVIRONMENTAL

Waterproof Level		IP68
------------------	--	------



External Document Links
[Installation Instruction](#)

Notes