



The RSB clip is designed for installation of FLEXWELL elliptical waveguide types E105 to E380 and overmoded waveguide type EO38. The clip is a universal clamp device which can be used in many mounting configurations.

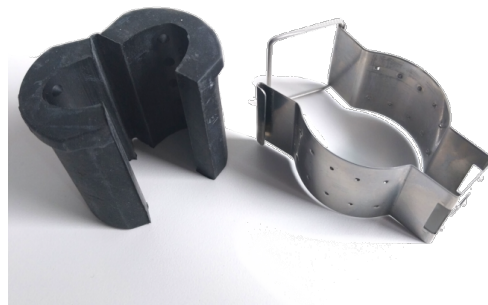
The clip is manufactured from stainless steel and is resistant against most environmental conditions.

The set consists of a stainless steel clamp including a clamp lining made of rubber.

FEATURES / BENEFITS

Elliptical Waveguide installation

- The RSB clip provides a simple and fast installation of small and medium size elliptical waveguides
- It includes a rubber clamp lining



RSB-114 with Clamp lining RSB-130/40

External Document Links

[Installation Instruction](#)

Notes

Technical features

GENERAL SPECIFICATIONS

Product Line		Elliptical Waveguide Accessories
Product Type		Hanger
Hanger Type		RSB Clip with clamp lining for Elliptical Waveguide
Transmission Line Type		E150 EP150

MECHANICAL SPECIFICATIONS

Number of Cable / Waveguide Runs		1
Material		Clip: Stainless Steel Clamp lining: EPDM
Drill Hole Size	mm (in)	8 (0.315)

ACCESSORIES

Spare Part / Useful Accessories		Cleat : RSB-310 Anchor bar fixation : RSB-315
---------------------------------	--	--

TEMPERATURE SPECIFICATIONS

Installation Temperature	°C (°F)	-50 to 85 (-58 to 185)
Operation Temperature	°C (°F)	-50 to 85 (-58 to 185)
Storage Temperature	°C (°F)	-50 to 85 (-58 to 185)

PACKAGING INFORMATION

Package Quantity		10
Weight per piece	kg (lb)	0.068 (0.15)