



Clamp lining for SCF12 and RSF12 cable

#### FEATURES / BENEFITS

The clamp lining has been designed to be used in combination with the RSB-Clip RSB-12 and RSB-12-IT. The use of the clamp lining in combination with RSB-Clip prevents SCF12-50 Jumper cables against damage e.g. due to cable movement by wind, therefore a deterioration of the electrical properties is avoided.



#### External Document Links

[Installation Instruction for Jumper with RSB-S12/12](#)

#### Notes

Only usable in combination with RSB-12 and RSB-12-IT

## Technical features

### GENERAL SPECIFICATIONS

Product Line		Coaxial Cable Accessories Hybrid Cable Accessories
Product Type		Clamp Lining
Transmission Line Type		SCF12-50 RSF12-50
Cable Type		Superflexible Coaxial Foam Dielectric
Color		Black

### MECHANICAL SPECIFICATIONS

Cable Size		1/2
Number of Cable / Waveguide Runs		1
Material		Material: EPDM UV resistant

### ACCESSORIES

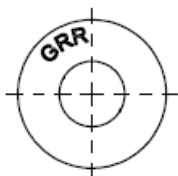
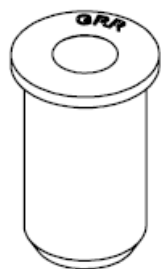
Spare Part / Useful Accessories		RSB-Clip : RSB-12 RSB-Clip : RSB-12-IT
---------------------------------	--	---

### TEMPERATURE SPECIFICATIONS

Operation Temperature	°C (°F)	-50 to 85 (-58 to 185 )
-----------------------	---------	-------------------------

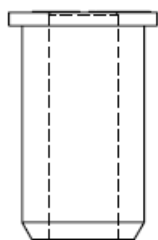
### PACKAGING INFORMATION

Package Quantity		10
Weight per piece	kg (lb)	0.009 (0.02)
Weight per kit	kg (lb)	0.09 (0.198)



ØD=15-16mm

Ød=12-14mm



Technical Drawing