



RFS' HYBRIFLEX™ Optical fibre cable distribution box is a wiring line device of user distributions in FTTH system and distributed Radio system, it provides protection and management for fiber cable, and be used for terminating, cable branching, cross connection. It is mainly used for user access point in FTTH-ODN network, it can be divided into indoor and outdoor type according to the installation scenario, for example distribution type and optic-split type. Pigtail and Splice protection sleeve are included.



FEATURES / BENEFITS

- Made of high quality engineer plastic material (PC+ABS)
- Good mechanical strength, Elegant appearance, sturdiness and durability
- Provides interconnection for F/O trunk riser and branch or jumper F/O cable.
- Suitable for indoor or outdoor, wall-mounted, pole installation
- Built-in stacked splice tray, easy for open, the splice tray can be taken down, easy for installation and maintenance.
- The box door opening Angle is >180°, easy for handling cables and connections inside box
- Cable pigtails patch cords are running through own path without disturbing each other, cassette type SC adaptor installation, easy maintenance. It is convenient for fixing and maintenance
- Fibre routing reasonable, bending radius of fibers in any place is greater than 30mm
- Water-proof/dust-proof/anti-aging, protection level up to IP65.

[External Document Links](#)[Notes](#)

Technical features

GENERAL SPECIFICATIONS

Product Type		Hybriflex
--------------	--	-----------

MECHANICAL SPECIFICATIONS

Material		PC + ABS
Mounting		Wall mounted, pole, aerial installation

TESTING AND ENVIRONMENTAL

Storage Temperature	°C (°F)	-40 to 65 (-40 to 149)
Operation Temperature	°C (°F)	-40 to 65 (-40 to 149)
Installation Temperature	°C (°F)	-40 to 65 (-40 to 149)

CABLES SUPPORTED

Supported F/O Connections		SC / APC
---------------------------	--	----------

ELECTRICAL SPECIFICATIONS

Protection Class		IP65
------------------	--	------

ADDITIONAL INFORMATION

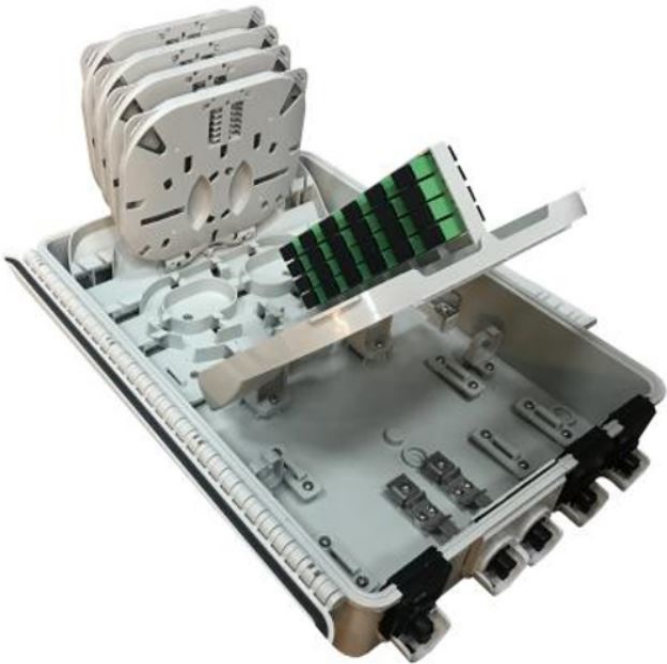
	SBIF-0Z06SS-APAP- YC	SBIF-0Z12SS-APAP- YC	SBIF-0Z24SS-APAP- YC		
Outer Dimension	292,5 mm × 227 mm × 102 mm	250 mm × 340 mm × 110 mm	420 mm × 320 mm × 130 mm		
Splitter and Adapter Ports	12	24	48		
Quantity of Pigtails included	24	48	96		
Quantity of Splice Protection Sleeves included	24	50	100		
Insertion loss (adapter&pigtail)	≤ 0.3dB	≤ 0.3dB	≤ 0.3dB		



SBIF-0ZXXSS-APAP-YC

Optical Fiber Cable Distribution Box, ABS,12-48 Cores,Pigtail is included

Return loss (SC/APC)	≥ 60dB	≥ 60dB	≥ 60dB		
Operation Humidity	≤95% 30 no corrosive gases around	≤95% 30 no corrosive gases around	≤95% 30 no corrosive gases around		
Atmospheric pressure	70Kpa 106Kpa	70Kpa 106Kpa	70Kpa 106Kpa		



Example for 24 Fiber