



**RFS' HYBRIFLEX™** Optical fibre cable distribution box is a wiring line device of user distributions in FTTH system and distributed Radio system, it provides protection and management for fiber cable, and be used for terminating, cable branching, cross connection. It is mainly used for user access point in FTTH-ODN network, it can be divided into indoor and outdoor type according to the installation scenario, for example distribution type and optic-split type. Splice protection sleeve is included.

**FEATURES / BENEFITS**

- Made of high quality engineer plastic material (PC+ABS)
- Good mechanical strength, Elegant appearance, sturdiness and durability
- Provides interconnection for F/O trunk riser and branch or jumper F/O cable.
- Suitable for indoor or outdoor ,wall-mounted , pole installation
- Built-in stacked splice tray, easy for open, the splice tray can be taken down, easy for installation and maintenance.
- The box door opening Angle is >180°, easy for handling cables and connections inside box
- Cable pigtails patch cords are running through own path without disturbing each other, cassette type SC adaptor installation, easy maintenance.It is convenient for fixing and maintenance
- Fibre routing reasonable, bending radius of fibers in any place is greater than 30mm
- Water-proof/dust-proof/anti-aging, protection level up to IP65.



**Technical features**

**GENERAL SPECIFICATIONS**

<b>Product Type</b>		Hybriflex
---------------------	--	-----------

**MECHANICAL SPECIFICATIONS**

<b>Material</b>		PC + ABS
<b>Mounting</b>		Wall mounted, pole, aerial installation

**TESTING AND ENVIRONMENTAL**

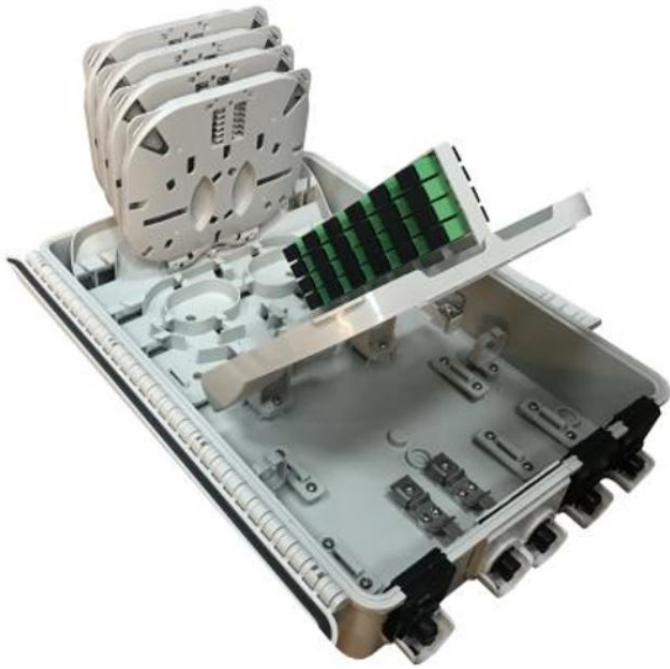
<b>Storage Temperature</b>	°C (°F)	-40 to 65 (-40 to 149)
<b>Operation Temperature</b>	°C (°F)	-40 to 65 (-40 to 149)
<b>Installation Temperature</b>	°C (°F)	-40 to 65 (-40 to 149)
<b>Sealing Class</b>		IP65

**RISER CABLES SUPPORT**

<b>Supported F/O Connections</b>		SC/APC
----------------------------------	--	--------

**ADDITIONAL INFORMATION**

	SBIF-0Z06SS-APCA-YC	SBIF-0Z12SS-APCA-YC	SBIF-0Z24SS-APCA-YC		
<b>Outer Dimension</b>	292,5 mm × 227,5 mm × 102 mm	250 mm × 340 mm × 110 mm	420 mm × 320 mm × 130 mm		
<b>Splitter and Adapter Ports</b>	12	24	48		
<b>Quantity of Pigtails included</b>	0	0	0		
<b>Quantity of Splice Protection Sleeves included</b>	24	50	100		
<b>Insertion loss (adapter&amp;pigtail)</b>	≤ 0.3dB	≤ 0.3dB	≤ 0.3dB		
<b>Return loss (SC/APC)</b>	≥ 60dB	≥ 60dB	≥ 60dB		
<b>Operation Humidity</b>	≤95% 30 no corrosive gases around	≤95% 30 no corrosive gases around	≤95% 30 no corrosive gases around		
<b>Atmospheric pressure</b>	70Kpa 106Kpa	70Kpa 106Kpa	70Kpa 106Kpa		



Example for 24 Fiber

[External Document Links](#)

[Notes](#)