



**STA4-LMP**

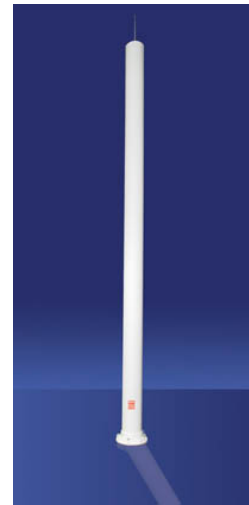
470-862 MHz UHF Superturnstile Antennas

STA-LMP/MP Series

A new ultra-slim and lightweight superturnstile UHF broadcast antenna supports the entire US and European UHF bands (470 to 862 MHz). This antenna exhibits excellent pattern circularity and ripple characteristics. The low profile offers significant reduction in wind loading and weight, to provide broadcasters with enormous flexibility when considering installation on existing loaded towers.

**FEATURES / BENEFITS**

- Ideal low wind load solution
- Ideal for broadcast applications up to 4 kW
- Exhibits pattern ripple of better than  $\pm 1.5$  dB across the entire UHF band
- Low drag profile underpins the antenna's high wind speed rating and low wind load characteristics
- Uniquely cost-effective
- Single rod lightning protection, fully DC grounded
- Purpose designed mounting bracket is available for LMP series antennas on request.



**Technical features**

**STRUCTURE**

Product Line		Antenna TV
Product Type		Band IV/V (UHF) TV Superturnstile Antennas

**ELECTRICAL SPECIFICATIONS**

Frequency Range	MHz	470 - 862
Polarization		Horizontal
Nominal Gain (Mid-band)	dBd	8
Azimuth Radiation Pattern		Omnidirectional
Return Loss	dB	>23
Power Rating	kW	4 @ 665 MHz
Impedance (unbalanced)	$\Omega$	50

**MECHANICAL SPECIFICATIONS**

Number of Channels		Multichannel
Input Connector		1-5/8" EIA
Dimensions (Height or Length)	cm (in)	260 (102.4)
Radome Diameter	mm (in)	269 (10.6)
Effective Area Front (full antenna) No Ice	m <sup>2</sup> (ft <sup>2</sup> )	0.45 (4.8)
Design Wind Speed	km/h (mph)	240 (150)
Wind Speed Comment		to Australian Standard
Pressurization Operational	kPa (psi)	NA
Weight	kg (lb)	40 (88.2)

**MATERIAL**

Material - Radome		Fibreglass
Material - Support Pole / Mounting		Galvanised steel
Colour		Light grey RAL 7035

[External Document Links](#)

[Notes](#)