

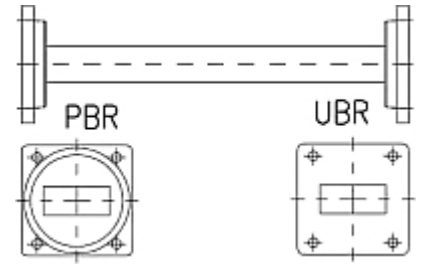


Rectangular Waveguide R 140 Straight Section,  
flanges PBR/UBR 140,  $f = 11.9\text{--}18.8\text{ GHz}$ ,  
VSWR max 1.05,  $A = 100\text{ mm}$  (3.9in),  
gasket and screw kit enclosure  
made of copper

**FEATURES / BENEFITS**

Waveguide installation

- The rectangular waveguide component provides simple installation in particular difficult cases
- It can be installed where less space is available
- It provides outstanding electrical performance

**Technical features****STRUCTURE**

Type of Rectangular Waveguide Component		Straight Section
Waveguide Size IEC (EIA)		R140 (WR62)
Flange A		PBR140
Flange B		UBR140
Flange Finish		Brass un-plated
Package Quantity		1

**ELECTRICAL SPECIFICATIONS**

Minimum Return Loss (max. VSWR)	dB (VSWR)	32.3 (1.05)
---------------------------------	-----------	-------------

**MECHANICAL SPECIFICATIONS**

Length	mm (in)	100 (3.9)
--------	---------	-----------

**MATERIAL**

Material		Copper
Color		Black

[External Document Links](#)

[Notes](#)