

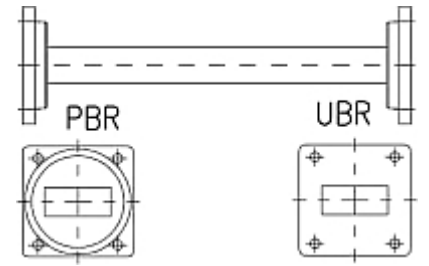


Rectangular Waveguide R 220 Straight Section, flanges PBR/UBR 220, f= 17.6-26.7 GHz, VSWR max 1.08, A=100mm (3.9in), gasket and screw kit enclosure made of copper

FEATURES / BENEFITS

Waveguide installation

- The rectangular waveguide component provides simple installation in particular difficult cases
- It can be installed where less space is available
- It provides outstanding electrical performance



Technical features

STRUCTURE

Type of Rectangular Waveguide Component		Straight Section
Waveguide Size IEC (EIA)		R220 (WR42)
Flange A		PBR220
Flange B		UBR220
Flange Finish		Brass un-plated
Package Quantity		1

ELECTRICAL SPECIFICATIONS

Minimum Return Loss (max. VSWR)	dB (VSWR)	28.3 (1.08)
---------------------------------	-----------	-------------

MECHANICAL SPECIFICATIONS

Length	mm (in)	100 (3.9)
--------	---------	-----------

MATERIAL

Material		Copper
Color		Black

External Document Links

Notes