



The TER\*3800MHz Series are coaxial loads which operate from DC up to 3.8 GHz. The products are ideally suited for termination of unused ports in distributed antenna systems or in RADIAFLEX® radiating cables systems.

**FEATURES / BENEFITS**

- Ideal for all kind of DAS applications
- Finned termination for heat dissipation
- Low VSWR

NO IMAGE  
AVAILABLE**Technical features****GENERAL SPECIFICATIONS**

Product Type		Load
Techn. Application		Indoor

**ELECTRICAL SPECIFICATIONS**

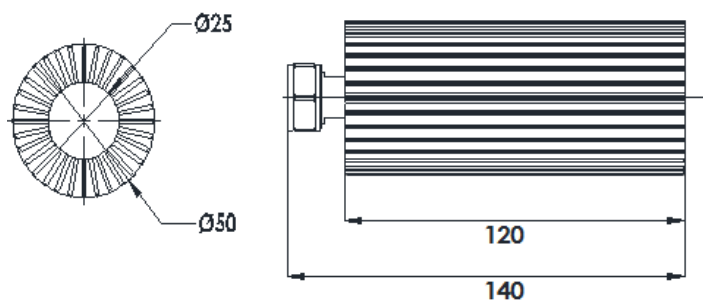
Frequency Range	MHz	DC-3.800
Impedance	Ohm	50
Max. VSWR / Return Loss, dB	VSWR/dB	/19
Total Input Power	W	20

**MECHANICAL SPECIFICATIONS**

Input Connector Type		4.3-10 male
Diameter	mm (in)	50 (1.97)
Length	mm (in)	140 (5.51)

**TEMPERATURE SPECIFICATIONS**

Temperature Range	°C (°F)	-25 to 65 (-13 to 149)
Environmental Class		Indoor

**External Document Links****Notes**