

PRODUCT DESCRIPTION

RFS TPS* Tapper product family has been designed to support a variety of wireless applications in the frequency band from 350 to 2700MHz. The units couple off a defined fraction of a RF signal from typically 5 to 30 dB with minimal reflections or loss. The broad frequency range is ideally suited for 3G / 4G multi-band distributed antenna systems or in combination with RADIAFLEX® radiating cables. Notably, these products feature a low level of network interferences due to their PIM optimized desing.



FEATURES / BENEFITS

- **Broadband 350-2700MHz**
- 4.3-10-female interfaces
- PIM optimized design (163dBc @ 2x43dBm)
- Ideal for all kind of DAS applications
- Low insertion loss
- High power handling
- Small size, low weight

TECHNICAL FEATURES

ELECTRICAL SPECIFICATIONS

Frequency Range	MHz	350-2700
Input Power	W	300
PIM 3rd @2*43 dBm	dBc	160
Input Impedance	Ohm	50
Max. VSWR / Return Loss	VSWR / dB	1.2 @ 350-960MHz,1800-2700MHz 1.3 @1710-1800MHz
Insertion Loss max.	dB	0.1

MECHANICAL SPECIFICATIONS

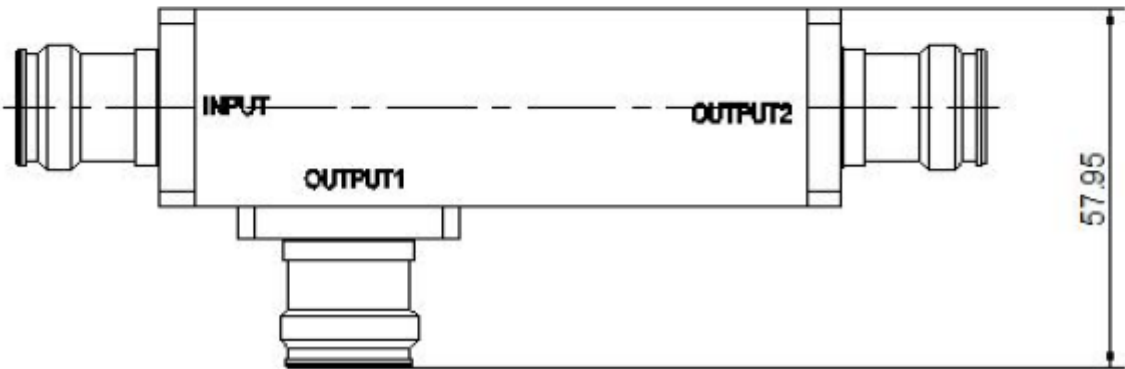
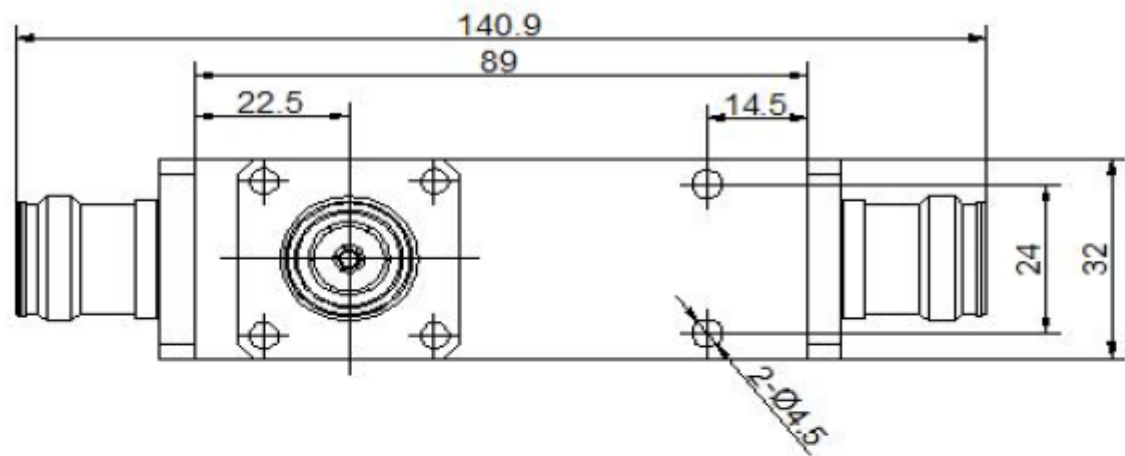
Connectors		4.3-10 Female
Number of Input Ports		1
Number of Output Ports		2
Temperature Range	°C	-25 to +75
IP Level		IP65
RoHS		Compliant
Dimensions Height*Width*Length	mm	89*32*32

MODEL NUMBER SPECIFICATIONS

Model Number		TPS5-43-350/2700-01	TPS6-43-350/2700-01	TPS8-43-350/2700-01	TPS10-43-350/2700-01
Coupling Value	dB	5	6	8	10
Coupling Flatness max.	dB	± 1,0	± 1,0	± 1,2	± 1,2

MODEL NUMBER SPECIFICATIONS

Model Number		TPS13-43-350/2700-01	TPS15-43-350/2700-01	TPS20-43-350/2700-01	TPS30-43-350/2700-01
Coupling Value	dB	13	15	20	30
Coupling Flatness max.	dB	+2,0 / -1,0			



Product Drawing

External Document Links

Notes