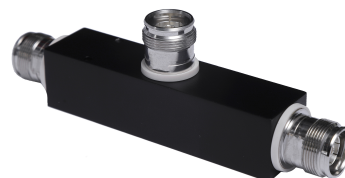




PRODUCT DESCRIPTION

RFS TPSE series Tapper/Unequal Divider have been designed for a variety of wireless applications in the frequency band from 350 to 6000MHz. The unit couples off a defined fraction of a RF signal from 5 to 30 dB with minimal reflections or loss. The broad frequency range is ideally suited for multi-band distributed antenna systems or in combination with RADIAFLEX® radiating cables.



FEATURES / BENEFITS

- **Broadband 555MHz-6000MHz**
- N Female Interface
- PIM Optimized Design (160dBc @2x43dBm)
- Low Insertion Loss
- High Power Handling
- Small Size, Low Weight

TECHNICAL FEATURES

ELECTRICAL SPECIFICATIONS

Frequency Range	MHz	350-6000
Power Rating	W	300
Maximum Reflected Power	W	200
PIM 3rd @2*43 dBm	dBc	160
Input Impedance	Ohm	50

MECHANICAL SPECIFICATIONS

Connectors		N Female
Dimensions, L*W*H	mm(in)	143.5*46*25 (5.65*1.81*0.98)
Net Weight ±10%	kg (lb)	0.25(0.55)
Temperature Range	°C	-25 to +65 (+160 for 2hours in an event of fire, encased in DragonSkin Cabinet)
IP Level		IP66
RoHS		Compliant



TPS3E-350/6000

Broadband Tapper/Unequal Divider for Wireless & Indoor Application, Support 350-6000MHz with coupling value 3dB

MODEL NUMBER SPECIFICATIONS

Model Number		TPS3E-350/6000	TPS5E-350/6000	TPS6E-350/6000	TPS8E-350/6000
VSWR		1.25:1@0.698-0.96&1.695-2.7GHz 1.35:1@0.35-0.698&3.5-4.5&4.9-6GHz	1.25:1@0.35-0.96&1.695-2.7GHz 1.3:1@3.5-4.5&4.9-6GHz	1.25:1@0.35-0.96&1.695-2.7GHz 1.3:1@3.5-4.5&4.9-6GHz	1.2:1@0.35-0.96&1.695-2.7GHz 1.3:1@3.5-4.5&4.9-6GHz
Coupling Loss	dB	3.0	5.0	6.0	8.0
Coupling Tolerance	dB	4.8dB +/-1.5dB@0.35-0.38GHz 4.8dB +/-1.3dB@0.38-0.698GHz 4.8dB +/-0.8dB@0.698-0.96GHz 4.8dB +/-0.8dB@1.695-2.7GHz 4.8dB +/-1.9dB@3.5-4.5GHz 4.8dB +/-1.1dB@4.9-6GHz	6dB +/-1.3dB@0.35-0.38GHz 6dB +/-1.1dB@0.38-0.698GHz 6dB +/-0.45dB@0.698-0.96GHz 6dB +/-0.6dB@1.695-2.7GHz 6dB +/-1.85dB@3.5-4.5GHz 6dB +/-1.1dB@4.9-6GHz	7dB +/-0.3/-1dB@0.35-0.38GHz 7dB +/-0.3/-1dB@0.38-0.698GHz 7dB +/-0.5dB@0.698-0.96GHz 7dB +/-0.7@1.695-2.7GHz 7dB +/-0.3/-1.4dB@3.5-4.5GHz 7dB +/-0.7dB@4.9-6GHz	8dB +/-1.3dB@0.35-0.38GHz 8dB +/-0.8dB@0.38-0.698GHz 8dB +/-0.4dB@0.698-0.96GHz 8dB +/-0.15/-1dB@1.695-2.7GHz 8dB +/-1.5dB@3.5-4.5GHz 8dB +/-0.1/-1.1dB@4.9-6GHz
Insertion Loss	dB	1.8dB@0.35-0.96GHz 2.1dB@1.695-2.7GHz 2dB@3.5-4.5&4.9-6GHz	1.65	1.5	1.15

MODEL NUMBER SPECIFICATIONS

Model Number		TPS10E-350/6000	TPS13E-350/6000	TPS15E-350/6000	TPS20E-350/6000
VSWR		1.2:1@0.35-0.96&1.695-2.7GHz 1.3:1@3.5-4.5&4.9-6GHz	1.2:1@0.35-0.96&1.695-2.7GHz 1.3:1dB@3.5-4.5&4.9-6GHz		
Coupling Loss	dB	10.0	13.0	15.0	20.0
Coupling Tolerance	dB	10dB +/-1.3dB@0.35-0.38GHz 10dB +/-0.8dB@0.38-0.698GHz 10dB +/-0.45 dB@0.698-0.96GHz 10dB +/-0.7dB@1.695-2.7GHz 10dB +/-1.5dB@3.5-4.5GHz 10dB +/-1.1dB@4.9-6GHz	13dB +/-1.0dB@0.35-0.38GHz 13dB +/-0.7dB@0.38-0.698GHz 13dB +/-0.5dB@0.698-0.96GHz 13dB +/-0.65dB@1.695-2.7GHz 13dB +/-0.25/-1.25dB@3.5-4.5GHz 13dB +/-0.3/-1dB@4.9-6GHz	15dB +/-1.0dB@0.35-0.38GHz 15dB +/-0.8dB@0.38-0.96GHz 15dB +/-0.6dB@1.695-2.7GHz 15dB +/-0.3/-1.3dB@3.5-4.5GHz 15dB +/-0.8dB@4.9-6GHz	20dB +/-1dB@0.35-0.38GHz 20dB +/-0.8dB@0.38-0.96GHz 20dB +/-0.4/-1.1dB@1.695-2.7GHz 20dB +/-1.2/-0.8dB@3.5-4.5GHz 20dB +/-1.5dB@4.9-6GHz
Insertion Loss	dB	0.75	0.65	0.4	0.2dB@0.35-0.96&1.695-2.7GHz 0.3dB@3.5-4.5&4.9-6GHz

MODEL NUMBER SPECIFICATIONS



TPS3E-350/6000

Broadband Tapper/Unequal Divider for Wireless & Indoor Application, Support 350-6000MHz with coupling value 3dB

Model Number		TPS30E-350/6000
VSWR		1.2:1@0.35-0.96&1.695-2.7GHz 1.3:1dB@3.5-4.5&4.9-6GHz
Coupling Loss	dB	30.0
Coupling Tolerance	dB	30dB+1.7/-0.3dB@0.35-0.698GHz 30dB +1.5/-0.2dB@0.698-0.96GHz 30dB ±1dB@1.695-2.7GHz 30dB +2.7/-0.8dB@3.5-4.5GHz 30dB +1.05/-2.5dB@4.9-6GHz
Insertion Loss	dB	0.2

External Document Links

[LINK to VEX FILES](#)

Notes